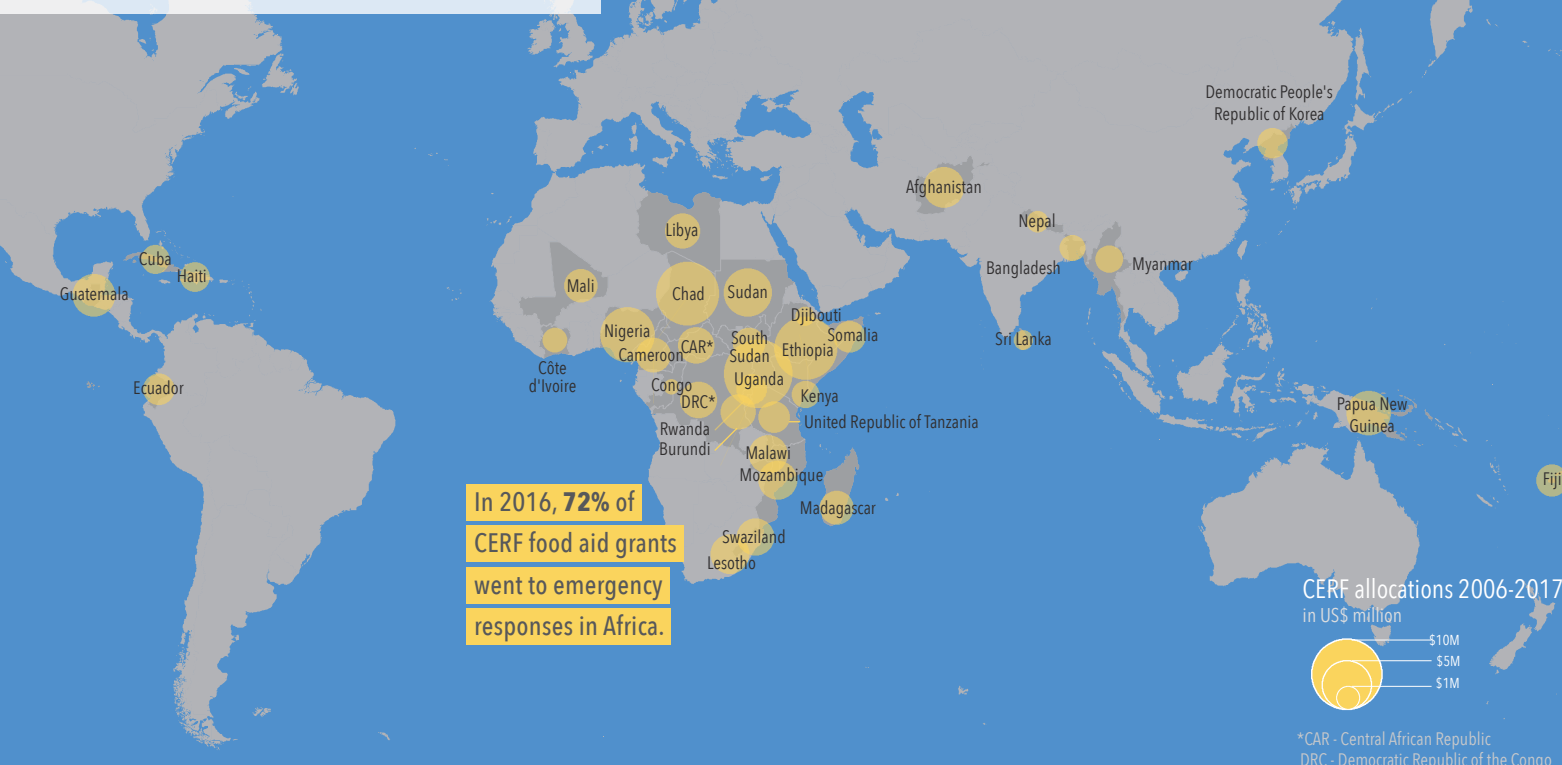


CERF 2016 FOOD ALLOCATIONS



An estimated
108 million people globally face
food insecurity.

CERF ensures rapid funding for life-saving food assistance the moment crises strike and also enables aid when the world's attention to the crises later fades away.

Source: Global Report on Food Crises 2017, FSIN

The **UNITED NATIONS**
has a **CENTRAL** mechanism to
ensure that in any **EMERGENCY**
people have the **RESPONSE** they
need, through a global **FUND** from
all nations and for all people.

“

In a world of dramatically increasing needs, the CERF is a cornerstone of the UN's humanitarian system. It is effective, it is efficient and it really reaches those most in need. I urge UN member states to heed the UN Secretary-General's call to increase the contributions to the CERF.

—Isabella Lövin, Deputy Prime Minister of Sweden and Minister for International Development Cooperation and Climate

”



United Nations
CERF

Central
Emergency
Response
Fund

**When people struck
by emergencies need food**

Immediate CERF funding is there to save lives and protect people

CERF yearly allocates approximately US\$450 million to emergencies across the globe. On average, US\$107 million of these ensure urgent food assistance for 10 million people.



Each year on average, CERF enables partners to reach 20.5 million people with health services, 13 million people with clean water and sanitation, 10 million people with food, 5 million people with agricultural assistance, 4.5 million people with protection, 4 million people with nutrition, and 1.5 million people with shelter.



CERF was one of the quickest and largest supporters of early humanitarian action in response to the El Niño phenomenon in 2015 and 2016. CERF allocated US\$118 million to 19 countries for early life-saving activities in response to El Niño-related droughts, floods and cyclones reaching a total of 9.3 million people with life-saving assistance. Of these, a total of 4.2 million people received food assistance.

© UNICEF/Matas



Berhane - Ethiopia

Berhane from Ethiopia smiles with relief. She has come to the health centre to get special nutritious food for her twins, both moderately malnourished. CERF funding helped ensure the nutritious food and food assistance for her family to help them pull through hard times as the yield from their land came in at just two quintals instead of five.

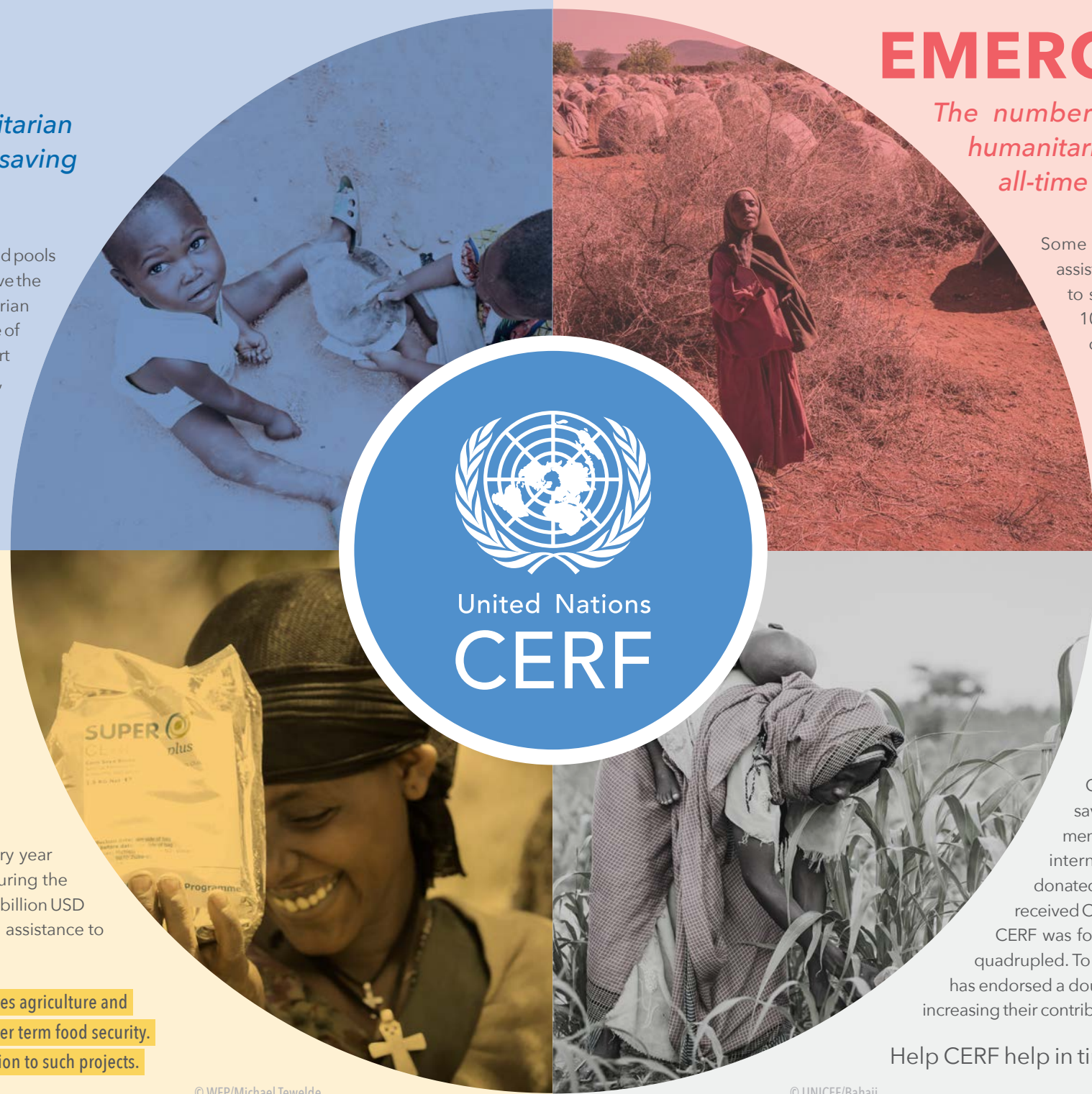
© WFP/Michael Tewede

CENTRAL

CERF is the UN's global humanitarian fund enabling coordinated life-saving humanitarian response

In a disaster, time lost means lives lost. CERF raises and pools funds in advance and directs them to where they have the greatest impact. When a crisis occurs, humanitarian organizations are often able to receive an assurance of CERF funding within hours, allowing them to kickstart life-saving work immediately. CERF funding is fast, predictable, impartial and based on life-saving priorities set collectively by humanitarian partners on the ground.

© IOM/Mary-Sanyu



RESPONSE

CERF delivers life-saving assistance and protection to people in need wherever and whenever crises hit

Nearly a quarter of all allocations from CERF every year goes to food assistance in humanitarian crises. During the past five years, CERF has allocated more than half a billion USD to the UN's humanitarian agencies to ensure food assistance to hundreds of millions of people in need.

In addition to CERF's food grants, the fund also provides agriculture and livestock related grants that contribute to ensure longer term food security. Over the past five years, CERF has allocated \$164 million to such projects.

© WFP/Michael Tewelde

EMERGENCY

The number of people in need of urgent humanitarian aid has in 2017 surpassed an all-time high of 145 million

Some 145 million people today require humanitarian assistance and a record high number of people are unable to secure a minimum level of food for survival. Today, 108 million people globally face food insecurity. Food crises are widespread and severe and often fuelled by protracted armed conflicts coupled with natural disasters.

© Giles Clarke for UNOCHA

FUND

CERF is global and a 'fund by all, for all'

CERF is able to act quickly and empower partners to save lives through the support of its donors. Today, 126 member states, as well as observers, regional governments, international organizations and the private sector have donated to CERF – including 47 member states that also have received CERF funding – a testament to CERF's importance. Since CERF was founded, global humanitarian needs have more than quadrupled. To keep up with the needs, the UN's General Assembly has endorsed a doubling of CERF. Therefore, member states are already increasing their contributions and many are contributing for the first time.

Help CERF help in time - cerf.un.org

© UNICEF/Bahaji

CERF response to Famine Prevention



South Sudan, Yemen, Somalia and north-east Nigeria are in the grip of an unprecedented food security crisis with over 20 million people being at or close to famine. In response, CERF released \$128.5 million for early action that ensures life-saving assistance for 4.1 million people. Of these allocations, more than \$22.5 million is dedicated to food assistance to more than 1.7 million people.



In addition to ensuring rapid responses to new emergencies, CERF is a lifeline for people in the world's most neglected and underfunded crises that fail to attract adequate resources when the crises fade from the world's attention. Through CERF's underfunded window – the only such mechanism in the world – CERF twice a year allocates resources to the world's most underfunded crises. Of the \$145 million allocated to underfunded emergencies in 2017, some \$30 million support food assistance interventions.

CERF Response in the Republic of the Congo – Cash Transfers

It's mid-afternoon in Kimouanda, the Republic of the Congo. Underneath a spreading mango tree, Marie is busy preparing a dish of cassava and greens. It will be her family's only meal that day. "I'm hungry. We are hungry" she says. Stories like Marie's are all too common in the verdant Pool region of the Republic of the Congo, where fighting began after the 2016 election. Over the past year, without attracting much media attention, thousands of people have had to leave their homes. CERF funding enabled WFP to kickstart a response and ensure that people receive mobile money each month. With the transfers, people buy rice, spaghetti, tomatoes, oil, sugar and salted fish.

© WFP/Jean-Martin Baeur



Innovating the response: CERF is increasingly supporting cash transfers in emergencies where markets remain intact. More than half of all cash transfers from CERF are for direct food purchases.