

HUMANITARIAN SITUATION

Uganda faces a massive refugee presence with continued arrivals from South Sudan and DRC. Uganda now hosts up to 1.39 million refugees. The unprecedented influx of refugees in 2016 and 2017 tripled the refugee population to nearly 1.35 million. Women and children represent 82 percent of the refugee population, with some 757,838 children making up 61 percent of the refugee population in the country. The refugee caseload and new arrivals continues to put pressure on the country's resources, in particular on land, basic service delivery systems and the humanitarian partners' capacity to respond to the crisis. Acute needs remain in protection, food assistance, shelter, health and nutrition, WASH and emergency livelihoods sectors.



2.4 million people in need¹



1.5 million people targeted overall¹



1.3 million hosted refugees²



1.6 million people with severe food insecurity³



54.6 under 5 y.o. mortality (per 1,000 live births)²



343 maternal mortality rate (per 100,000 live)²



79% improved water source (% population with access)²

CERF RESPONSE

A \$17 million allocation will focus on the needs of over 700,000 people including over 160,000 persons in host communities in the Kyaka II, Kyangwali, Palabek, Palorinya, and Imvepi settlements. With CERF funds, the UN Country Team aims to sustain and improve essential life-saving services for recent refugees who are sheltered in settlements, ensure that essential protection services are provided, and implement emergency livelihoods and community support activities such as cash for work.



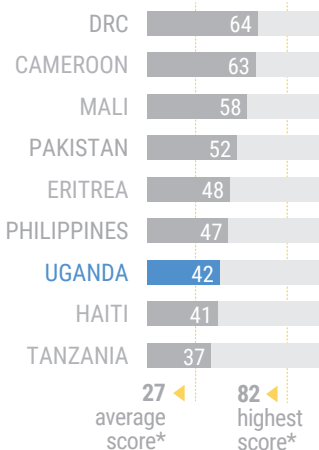
\$17 million allocated amount



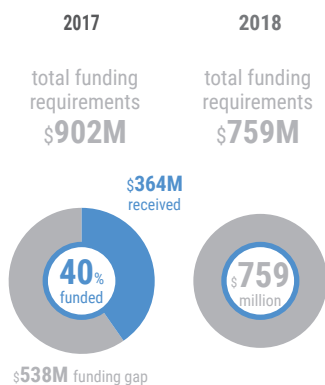
727,557 people targeted by CERF

FUNDING, RISK AND VULNERABILITY

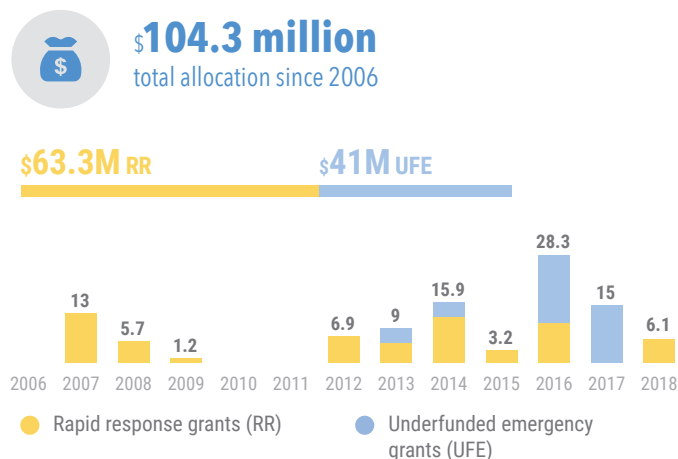
Risk & vulnerability⁴ CIRV (1-100)



Funding level⁵ in US\$ million (at the time of analysis November 2017)



Allocations to Uganda since 2006⁴ in US\$ million



*based on 192 countries in the CIRV analysis