

HUMANITARIAN SITUATION

Tanzania hosts over 300,000 refugees of which 231,000 are Burundian refugees and asylum-seekers residing in three overcrowded refugee camps in north-western Tanzania. Tanzania remains the largest host of Burundian refugees in the region. Women and children make up 78% of the total refugee population. Delivery and follow-up of critical protection services to children at risk, SGBV survivors, and other persons with specific needs are severely affected by gaps in other sectors.



800,000
people in need¹



400,000
people targeted overall¹



308,837
refugees²



48.7 under 5 y.o. mortality
(per 1,000 live births)³



398 maternal mortality rate
(per 100,000 live)³



55.6% improved water source
(% population with access)³

CERF RESPONSE

A \$10 million allocation will focus on the needs of 231,000 Burundian refugees and asylum-seekers in the camps in the Kigoma Region. With CERF funds, the UN Country Team aims to ensure protection and basic service assistance is maintained in line with international norms to Burundian refugees and asylum-seekers. CERF will support life-saving interventions in food security, health, protection and WASH sectors.



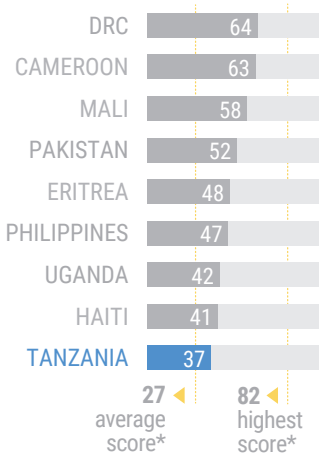
\$10 million
allocated amount



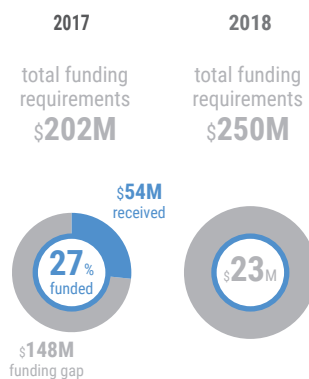
231,000
people targeted by CERF

FUNDING, RISK AND VULNERABILITY

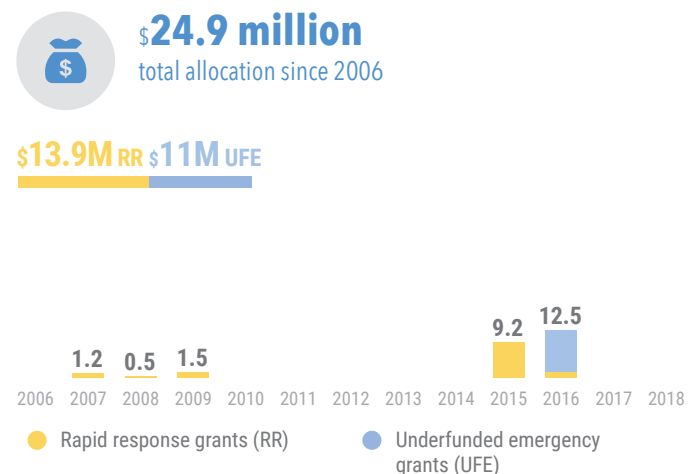
Risk & vulnerability⁴ CIRV (1-100)



Funding level⁵ in US\$ million (at the time of analysis November 2017)



Allocations to Tanzania since 2006⁴ in US\$ million



*based on 192 countries in the CIRV analysis