

SYRIA CRISIS

CERF-funded response 2011-2016 As of 10 March 2017

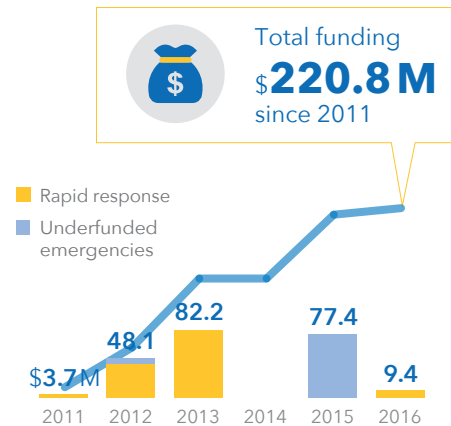


United Nations
CERF | Central
Emergency
Response
Fund

As the crisis enters its sixth year, 13.5 million people are in need of humanitarian assistance in Syria and neighboring countries. 6.3 million people have been internally displaced by violence while 5 million people have fled to Turkey, Lebanon, Egypt, Jordan and Iraq. Since 2011, CERF has allocated over \$220 million for displaced people in Syria and the neighbouring countries. Most recently, CERF released \$9.4 million through its Rapid Response window to provide urgent health care, protection, nutrition and water and sanitation services for refugees in Jordan.

ALLOCATIONS 2011-2016

in US\$ million



POPULATION AFFECTED



13.5 million

People in need of humanitarian assistance and protection inside Syria¹



6.6 million

People displaced inside Syria

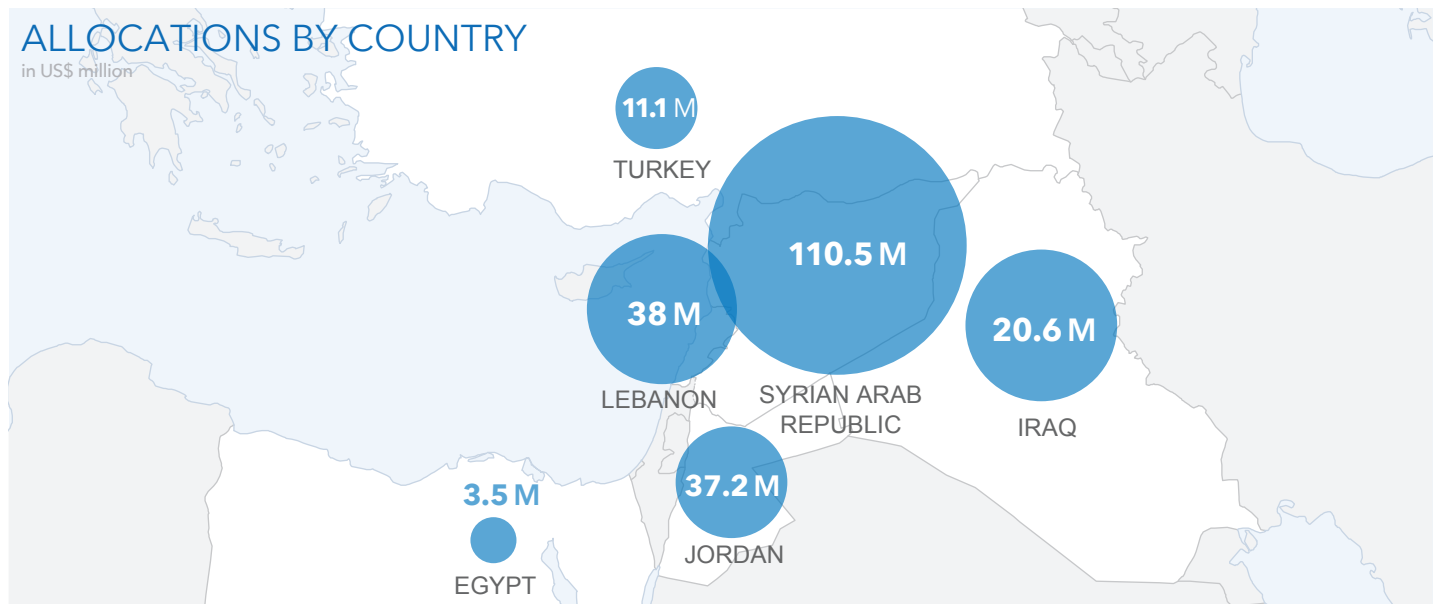


5.0 million

Registered Syrian refugees in neighbouring countries²

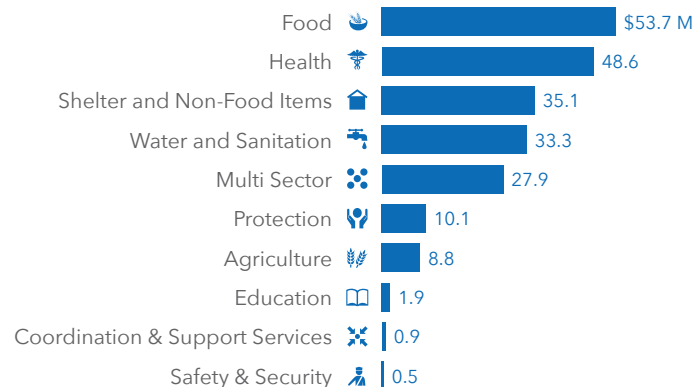
ALLOCATIONS BY COUNTRY

in US\$ million



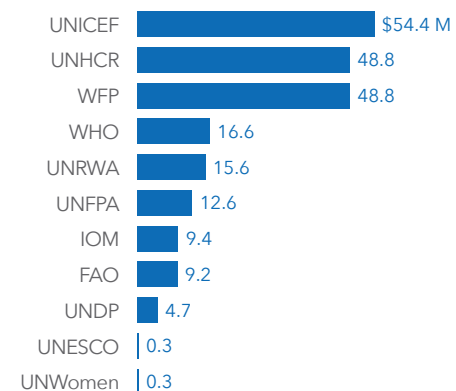
ALLOCATIONS BY SECTOR

in US\$ million



ALLOCATIONS BY AGENCY

in US\$ million



The boundaries and names shown and the designations used on this map do not imply official endorsement or acceptance by the United Nations.

Creation: 10 March 2017 Source: CERF (8 February 2017), ¹2017 Global Humanitarian Needs Overview, ²UNHCR, UNCS

Feedback: cerf@un.org cerf.un.org www.unocha.org