

# SOMALIA



CERF and SHF support in 2018 (as of 16 October 2018)

US\$51 million in coordinated allocations from OCHA managed pooled funds – the Central Emergency Response Fund (CERF) and the Somalia Humanitarian Fund (SHF) – have helped humanitarian partners in Somalia deliver critical life-saving assistance for millions of people affected by prolonged drought and seasonal flooding.

By leveraging their comparative advantages – CERF was used to jump-start early action and the SHF provided critical funding directly to for local Non-Governmental Organizations (NGOs) – the humanitarian community was able to scale up quickly and deliver a stronger collective response.

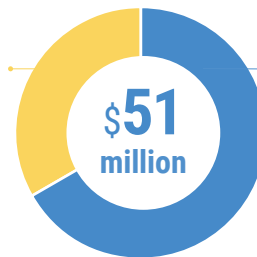
## OVERVIEW OF ALLOCATIONS in US\$ million



**\$51 million**  
allocated by  
CERF and SHF in 2018

**\$17 million**  
allocated by CERF

**\$34 million**  
allocated by SHF



**\$12M**  
Reserve allocations

**\$22M**  
Standard allocations

**\$5M** for floods  
**\$12M** for drought

## HUMANITARIAN SITUATION

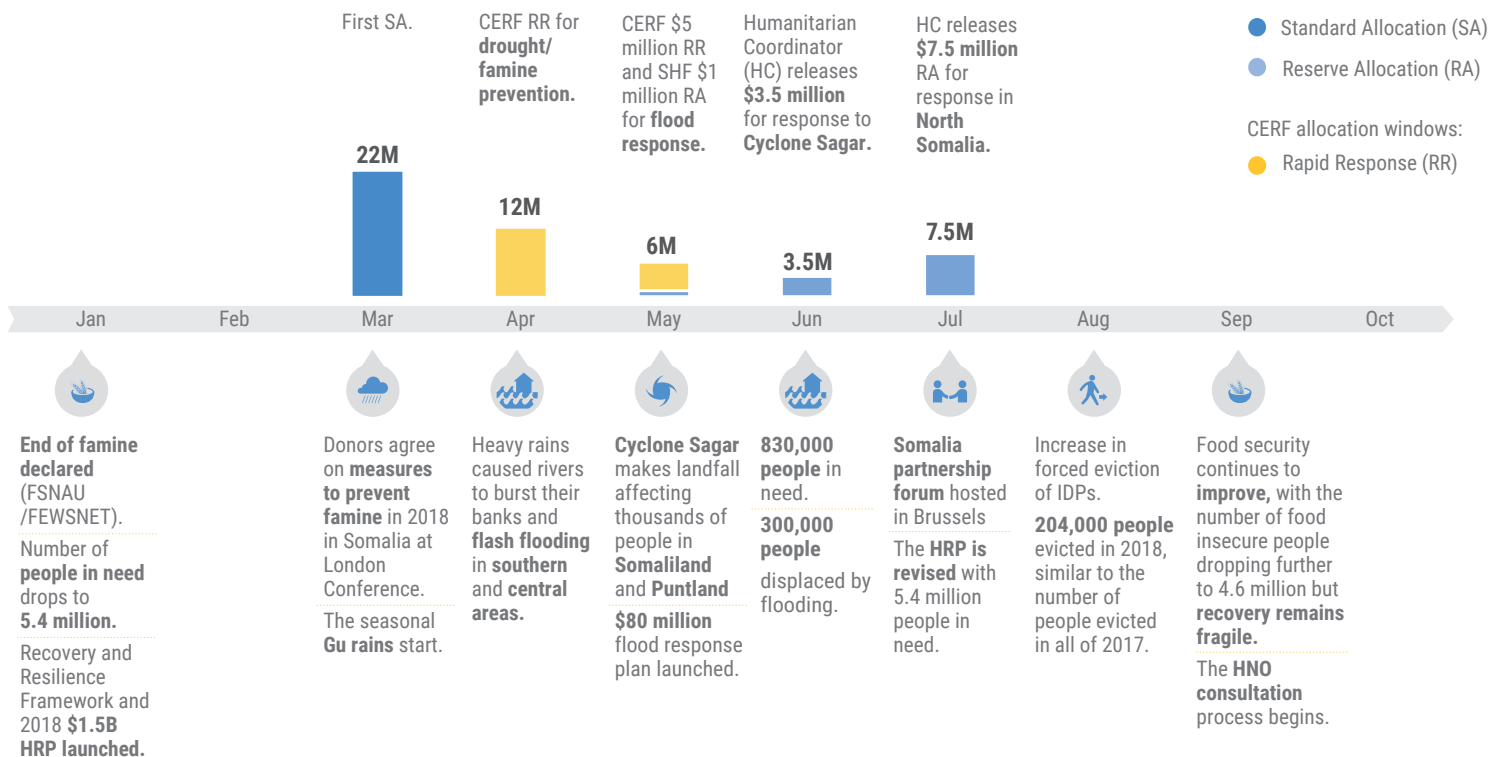


**4.6 million**  
people are food  
insecure<sup>1</sup>



**\$1.5 billion**  
funding  
requirements<sup>1</sup>

## ALLOCATIONS TIMELINE in US\$ million



<sup>1</sup>FSNAU/FEWSNET: Food Security and Nutrition Analysis Unit for Somalia / Famine Early Warning Systems Network

