

HUMANITARIAN SITUATION

After the five-month long armed conflict that ended in October 2017 between the Government of the Philippines and a local non-state armed group, over 325,000 civilians from Marawi City and other Lanao del Sur municipalities remain on the Government's displacement registry.¹ The conflict has left large areas of Marawi City uninhabitable, affecting as many as 60,000 of the city's 201,000 residents who will not be able to return for several months or years. Additionally, social services, utilities, housing, livelihoods and local economies remain severely impacted.



400,000
people in need²



199,000
people targeted overall³



325,000 IDPs from Lanao del Sur municipalities¹



408 hosted refugees⁴



28 under 5 y.o. mortality (per 1,000 live births)⁴



114 maternal mortality rate (per 100,000 live)⁴



91.8% improved water source (% population with access)⁴

CERF RESPONSE

A \$5 million allocation will focus on the needs of more than 83,000 conflict displaced persons and persons in affected communities in Marawi City and five priority municipalities in Lanao del Sur province. The CERF contribution will strengthen support for the most vulnerable people in host communities, evacuation centres and return sites, to meet basic needs in food security, health and nutrition; address protection concerns; and support IDP returnees through the provision of assistance at their places of origin.



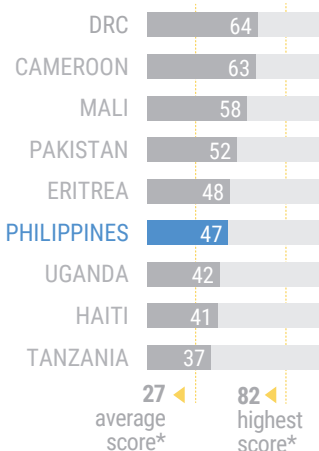
\$5 million
allocated amount



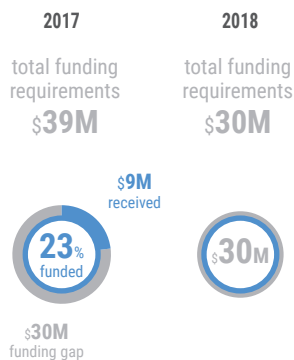
83,635
people targeted by CERF

FUNDING, RISK AND VULNERABILITY

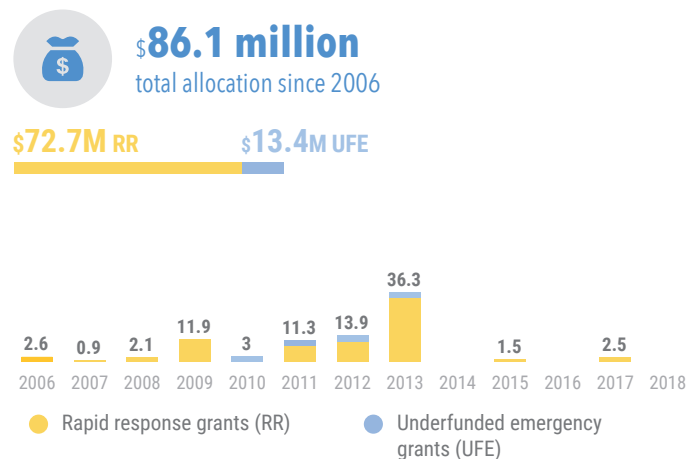
Risk & vulnerability⁵ CIRV (1-100)



Funding level⁶ in US\$ million (at the time of analysis November 2017)



Allocations to Philippines since 2006⁵ in US\$ million



*based on 192 countries in the CIRV analysis