

METHODOLOGY

CERF Underfunded Emergencies (UFE): 2018 first allocation round



United Nations
CERF | Central
Emergency
Response
Fund

The Central Emergency Response Fund's (CERF) underfunded emergencies (UFE) grants are allocated twice a year to the least funded emergencies with the highest levels of risk, vulnerability and humanitarian needs.

The Emergency Relief Coordinator selects emergencies that will receive CERF support for life-saving humanitarian action based on a rigorous analysis and an inclusive consultation process. Qualitative and contextual information is collected during a consultation process with UN agencies, NGOs and different parts of OCHA, as well as from a document review. The two-tier analysis of funding levels and humanitarian needs relies on quantitative data from established data sources.

The CERF secretariat analysed the funding coverage of all emergencies with data from the Financial Tracking

Service (FTS), UN agencies and the country-based pooled funds dashboard. The analysis then considers numerous data sources on vulnerability and humanitarian needs, especially those that focus on food insecurity, conflict, human rights and protection. The six measures are weighted and combined into the CERF Index for Risk and Vulnerability (CIRV), which includes data on conflict and natural disasters, protection and fragility, vulnerable groups and coping capacity, and is forward-looking as it includes assessments of future risks.

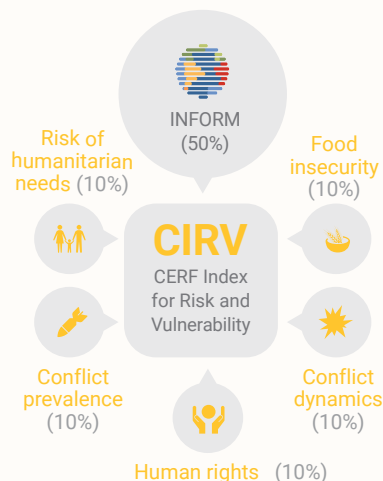
CERF continuously improves the methodology and process it uses to identify the most underfunded emergencies, based on feedback collected after each allocation round. For the first time this round, CERF analysed 5-year trends of funding levels and humanitarian needs to identify worsening situations.

RISK AND VULNERABILITY IN UNDERFUNDED EMERGENCIES

	Allocation in US\$M	INFORM 1-10	Early Warning for Humanitarian Needs	Food Insecurity 1-100	Violent Conflict	Conflict Dynamics	Rights Violations 1-5	CIRV 1-100	Funding coverage %	Funding requirements US\$ million
DRC*	28	7.1		56	Yes	Deteriorating	4.67	64	46.7%	1,690
UGANDA	17	6.0		56	Yes	No change	3.00	42	40.3%	759
CAMEROON	10	6.2	High	22	Yes	Deteriorating	3.50	63	47.0%	306
TANZANIA	10	5.6		33	No	No change	3.00	37	26.8%	250
HAITI	9	6.3		44	No	No change	2.33	41	34.1%	252
MALI	8	6.0	High	33	Yes	Deteriorating	3.67	58	38.4%	256
PAKISTAN*	8							52	34.7%	120
ERITREA*	5							48	20.5%	23
PHILIPPINES	5	5.2		0	Yes	Deteriorating	5.00	47	23.0%	30

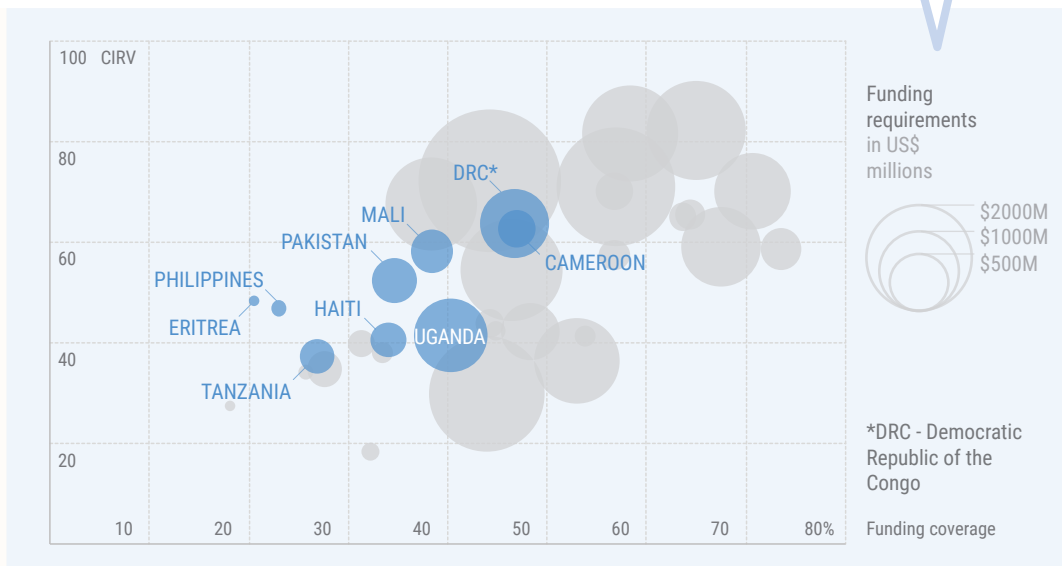
CERF INDEX OF RISK AND VULNERABILITY

CIRV consists of 6 measures weighted as shown in the graph.



FUNDING AND VULNERABILITY

Scatter plot showing funding (% of funding covered) versus risk and vulnerability (CIRV) analysis.



*Vulnerability details are not available for public. Please contact cerf@un.org for this inquiry