

HUMANITARIAN SITUATION

Despite the signature of the Agreement for Peace and Reconciliation in 2015, armed conflict, inter-communal violence and terrorist attacks continue to plague Mali, and have spread from the north to the central part of the country, increasing vulnerability and humanitarian needs. In 2017, 30,000 people were newly displaced by the conflict and insecurity. Overall, around 5.1 million people – more than 27% of the population – live in regions affected by the crisis, with more than 4.1 million requiring life-saving and protection assistance.



4.1 million
people in need¹



1.6 million
people targeted overall¹

Affected people¹ in million



38,172
IDPs for 2017²



17,039
hosted refugees³



800,000 people
with severe food insecurity⁴



114.7 under 5 y.o. mortality
(per 1,000 live births)⁵



587 maternal mortality rate
(per 100,000 live)⁵

CERF RESPONSE

A \$8 million allocation will focus on the needs of 263,156 people in five regions (Gao, Menaka, Kidal, Timbuktu and Mopti). CERF will support life-saving interventions in WASH, Nutrition, and Food Security sectors for IDPs and vulnerable people in the host communities. Health and Protection needs will be addressed as cross-cutting issues.



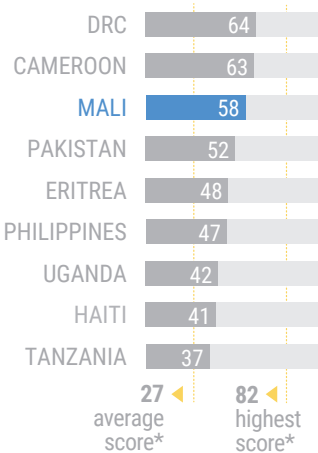
\$8 million
allocated amount



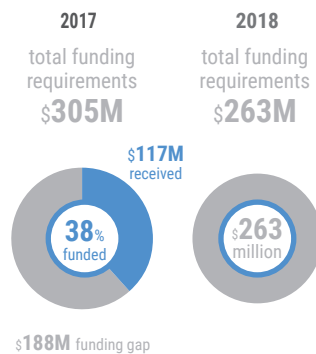
263,156
people targeted by CERF

FUNDING, RISK AND VULNERABILITY

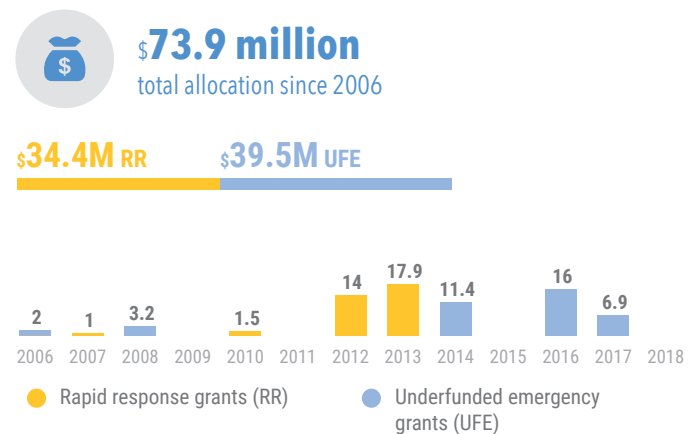
Risk & vulnerability⁵ CIRV (1-100)



Funding level⁷ in US\$ million
(at the time of analysis November 2017)



Allocations to Mali since 2006⁶ in US\$ million



*based on 192 countries in the CIRV analysis