

LAKE CHAD BASIN CRISIS

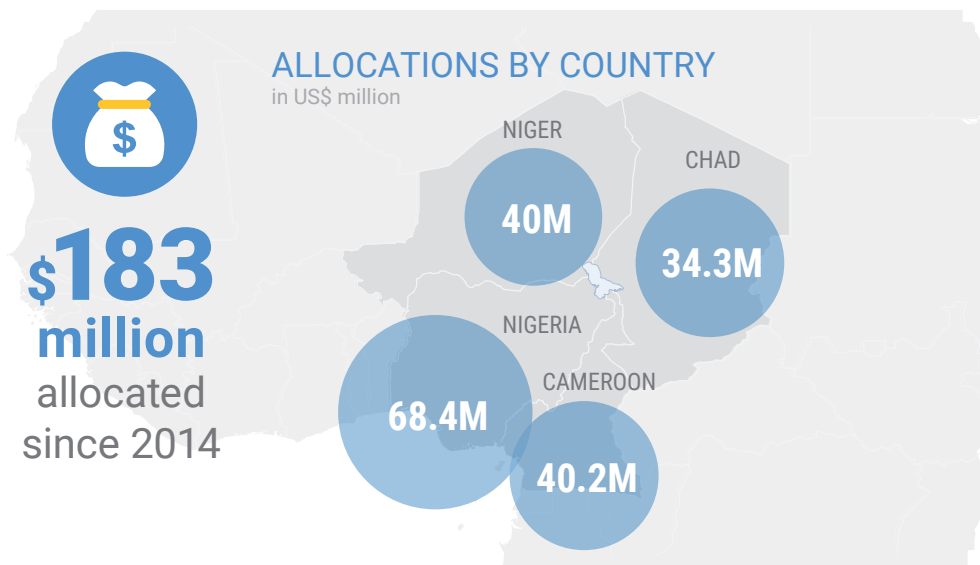
CERF allocation overview (2014-2018) as of 31 August 2018



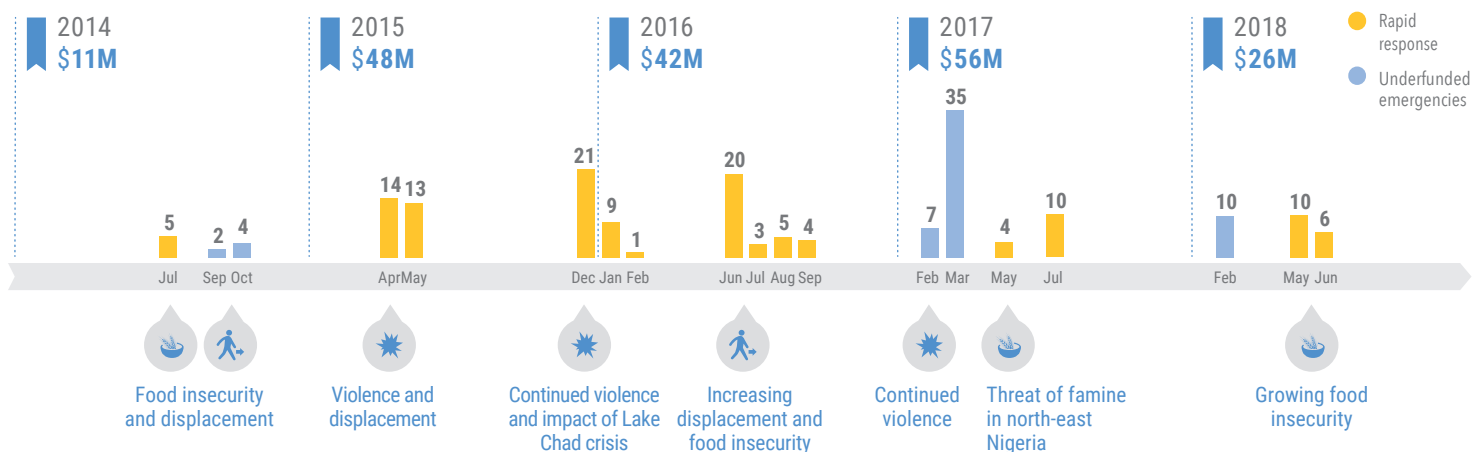
United Nations
CERF

Central
Emergency
Response
Fund

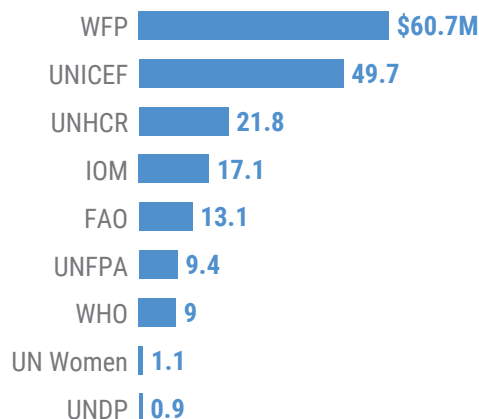
Over 10 million people across the Lake Chad Basin are in urgent need of humanitarian assistance and protection.¹ Since 2014, CERF has provided nearly \$183 million for life-saving humanitarian assistance to people affected by the conflict and food crisis. With support from CERF, humanitarian partners have provided life-saving assistance and protection for the most vulnerable people, including internally displaced people, returnees, refugees and host populations.



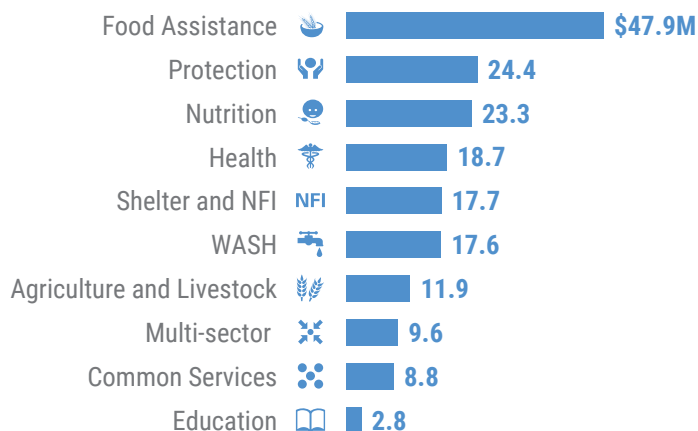
ALLOCATIONS TIMELINE in US\$ million



ALLOCATIONS BY AGENCY in US\$ million



ALLOCATIONS BY SECTOR in US\$ million



The boundaries and names shown and the designations used on this map do not imply official endorsement or acceptance by the United Nations.