

The Horn of Africa is facing one of the worst droughts in decades, leaving almost 12 million people in Ethiopia and Somalia in urgent need of food assistance. Extensive crop failures, record low vegetation coupled with livestock death and limited water resources are affecting Somalia and South and Eastern Ethiopia. CERF has released a total of \$36.5 million to help 2.8 million people - more than 20% of the affected population - in Somalia and Ethiopia. Funds allow humanitarian partners to scale up mitigation measures, avert further loss of livelihood and respond to severe food insecurity and malnutrition. Affected people will immediately receive access to water, health, nutritional and agricultural services. This CERF grant covers only a small portion of what is required to kick-starting early action in response to rising hunger and malnutrition levels. More resources are urgently needed to avert a humanitarian catastrophe.

### POPULATION AFFECTED<sup>1</sup>



**11.8 million**  
people in need of  
**food assistance**



**8.5 million**  
people face acute  
**food security crisis**  
and **emergency**  
(IPC phase 3 or above)\*

\*Integrated Food Security Phase Classification (IPC) crisis: Food consumption gaps with high or above usual acute malnutrition.

### ALLOCATIONS IN 2017

in US\$ million



**\$36.5 million**  
CERF allocations to  
Horn of Africa



targeting  
**2.8 million**  
people



**\$1.8 BILLION**  
Funding requirements<sup>3</sup>

### EARLY INTERVENTION



Emergency food  
assistance



Supplementary feeding



Water trucking



Mobile health and  
nutrition clinics



Animal health



Destocking



Cash-based transfer



Therapeutic food



Emergency repair of  
water points



Disease surveillance and  
response



Survival livestock  
feed

### ETHIOPIA



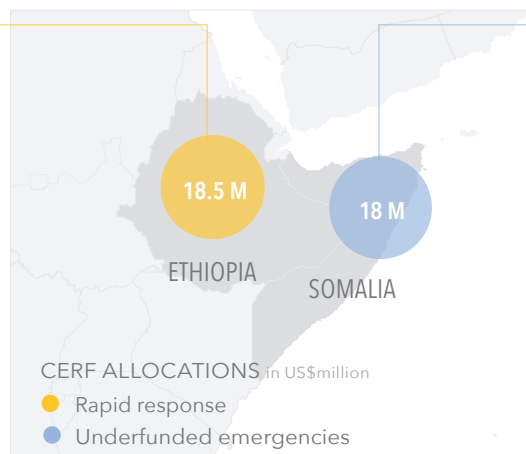
**5.6 M** people in need<sup>2</sup>



**5.6 M** targeted for food  
assistance<sup>2</sup>

**1.5 M** people targeted  
by CERF

Based on Humanitarian Requirements Document 2017



### SOMALIA



**6.2 M** people in need<sup>1</sup>



**5.5 M** targeted for food  
assistance<sup>1</sup>

**1.3 M** people targeted  
by CERF

Based on Humanitarian Response Plan 2017

The boundaries and names shown and the designations used on this map do not imply official endorsement or acceptance by the United Nations.

Creation: 15 March 2017 Source: CERF (25 February 2017), <sup>1</sup>2017 Somalia Humanitarian Response Plan, <sup>2</sup>Ethiopia Humanitarian Requirements Document 2017, <sup>3</sup>FIS, UNCS  
Feedback: cerf@un.org cerf.un.org www.unocha.org