

CENTRAL AFRICAN REPUBLIC CRISIS

CERF-funded response in 2013-2016

As of 26 August 2016



United Nations

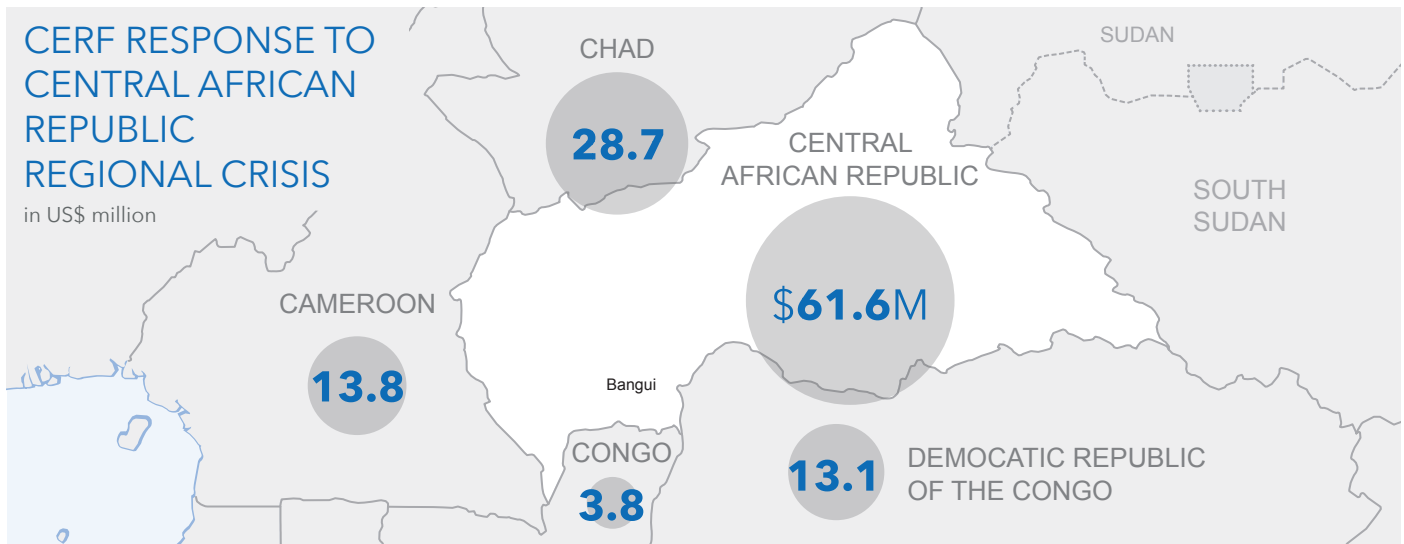
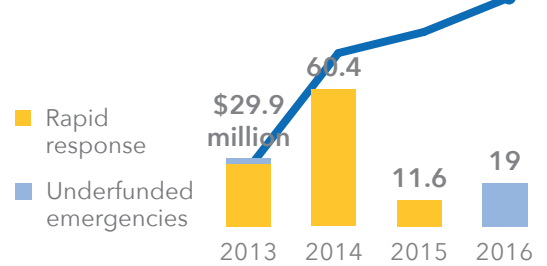
CERF

Central
Emergency
Response
Fund

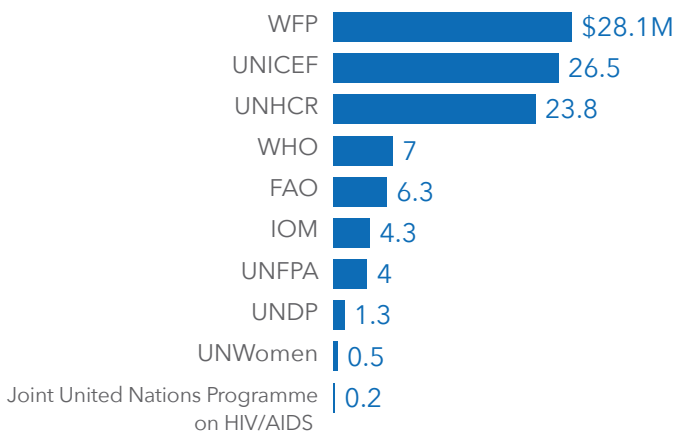
The Central African Republic (CAR) has descended into chaos and deadly violence following years of political crisis, lawlessness and deepening humanitarian needs. On 9 December 2013, three days before a system-wide Level 3 emergency was declared, the Emergency Relief Coordinator approved an initial US\$9.8 million from CERF to support relief efforts in CAR. Since then, more than \$120 million has been allocated to provide assistance in CAR and neighbouring countries affected by the crisis. Latest, in August 2016 CERF allocated \$9 million to CAR and \$10 million to Chad through CERF's underfunded emergencies window to support displaced people, refugees, returnees and host communities. A total of \$61.6 million has now been allocated from CERF to humanitarian assistance in CAR and \$59.3 million to support operations related to the CAR crisis in Chad, Cameroon, Congo and the Democratic Republic of the Congo.



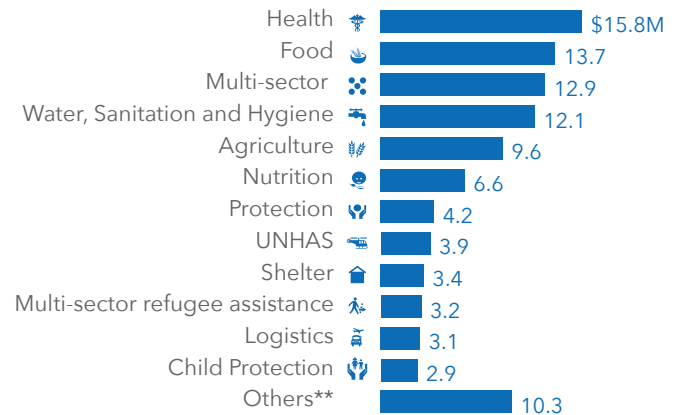
Allocation by year in US\$ million



ALLOCATIONS BY AGENCY* in US\$ million



ALLOCATIONS BY SECTOR* in US\$ million



**Camp Coordination and Management, Sexual and/or Gender-Based Violence, Human Rights, Education, Non-Food Items, Early Recovery, Telecommunications, Livestock

*does not include allocations in 2016

CERF is one of the fastest and most effective ways to support rapid humanitarian response for people affected by natural disasters and armed conflict. The Fund, which is managed by the United Nations Office for the Coordination of Humanitarian Affairs (OCHA), receives voluntary contributions year round from United Nations Member States and Observers, regional governments, private sector, foundations and individuals. This money is set aside for immediate use at the onset of emergencies, in rapidly deteriorating situations and in protracted crises that fail to attract sufficient resources.