

HUMANITARIAN SITUATION

Some 3.3 million people in Cameroon, primarily in the Far North region, are in need of humanitarian assistance due to Boko Haram attacks and violent conflict in the Lake Chad basin which has internally displaced 242,000 persons. In addition to conflict, calamities such as food insecurity also contribute to under-development. The departments most affected by the crisis are Logone-et-Chari and Mayo-Sava which host 77% of the internally displaced persons. Cameroon also hosts 331,000 refugees from the Central African Republic and Nigeria.



3.3 million
people in need¹



1.3 million
people targeted overall¹

Affected people¹ in million



242,000
IDPs for 2017²



331,000
hosted refugees¹



70,000
refugee returnees²



180,000 people
with severe food insecurity³



75.6% improved water source
(% population with access)²

CERF RESPONSE

A \$10 million allocation will focus on providing emergency food assistance and reproductive health services as well as emergency protection for women, girls and boys in Logone-et-Chari, Mayo-Sava and Mayo Tsanaga departments. The CERF contribution will address priority needs of 479,573 people including internally displaced persons; refugees; and communities hosting refugees and / or IDPs and returnees.



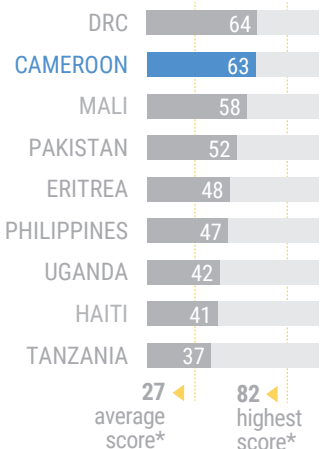
\$10 million
allocated amount



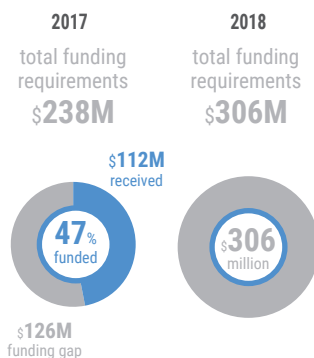
479,573
people targeted by CERF

FUNDING, RISK AND VULNERABILITY

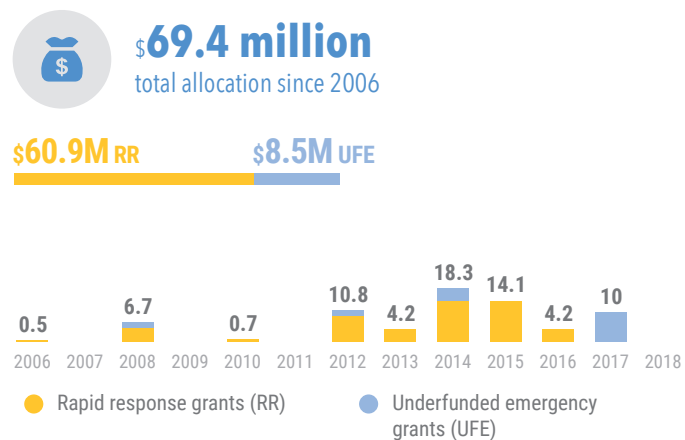
Risk & vulnerability⁴ CIRV (1-100)



Funding level⁵ in US\$ million (at the time of analysis November 2017)



Allocations to Cameroon since 2006⁴ in US\$ million



*based on 192 countries in the CIRV analysis

Data sources: 1 Cameroon Humanitarian Response Plan 2018, 2 INFORM: www.inform-index.org, 3 OCHA Headquarter (as of Feb 2018)

4 CERF Secretariat, 5 Financial Tracking Services

Creation date: 15 February 2018 Feedback: cerf@un.org www.unocha.org/cerf www.reliefweb.int