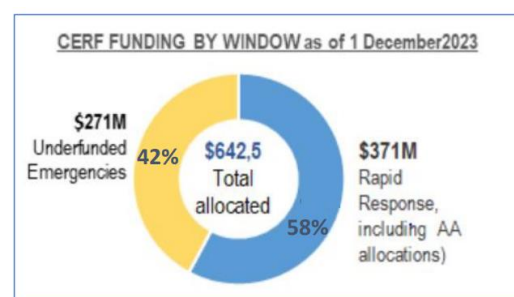


This background document provides an overview of CERF’s responses so far in 2023 (page 1) and highlights key allocations since the last Advisory Group meeting in June 2023 (page 2). More comprehensive, detailed, and real-time information about CERF allocations is available in the Funds’ online information tools, including the [CERF online allocation tracker](#), the [CERF Data Hub](#), and the [Pooled Funds Data Hub](#).

CERF IN ACTION

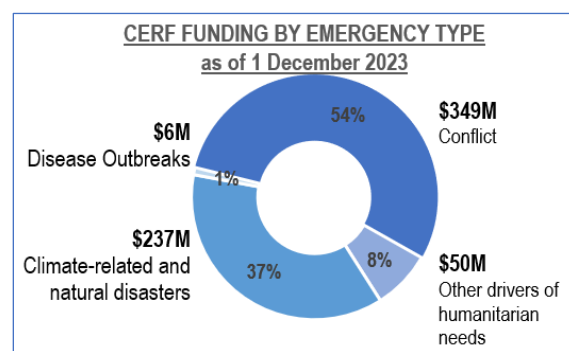
Climate disasters, conflicts, and disease outbreaks have persisted throughout this year, fueling a growing need for humanitarian assistance. As of 1 December, CERF has allocated over US\$642.5 million so far in 2023 to UN agencies and their international, national and local partners to deliver life-saving assistance to millions of people in 40 countries.

Jump-starting responses to emergent crises: Throughout 2023, CERF has been a catalyst for urgent responses to new and rapidly escalating crises worldwide. With \$371 million provided in funding through its Rapid Response (RR) window, CERF’s swift and decisive action has significantly expedited vital aid delivery, with most urgent requests processed in less than two days.



Boosting underfunded operations: In its ongoing commitment to strengthen underfunded humanitarian operations through its UFE window, CERF has in 2023 allocated a record-breaking \$271 million to countries in critical need in Africa, Asia, the Americas, and the Middle East – the highest annual amount ever disbursed. Through its underfunded allocations, CERF has championed efforts to **improve the quality of aid**, by seeking to advance localization and Accountability to Affected Populations (AAP). To promote a response that is as local as possible in line with the commitments of the Grand Bargain, the ERC has continued to encourage UN Resident Coordinators/Humanitarian Coordinators to engage local and national partners in the strategic prioritization of allocations and has also called on them to set a benchmark for the percentage of resources being sub-granted to national and local partners. CERF has also sought to advance innovations and collective efforts around AAP, providing \$5 million to empower affected demographics, especially women, girls, and young people, to effectively participate in humanitarian decision-making processes.¹

Responding to the main drivers of humanitarian needs. As conflict remains a dominant driver of humanitarian needs worldwide, the largest portion of CERF funds so far this year – \$349 million or 54 per cent – has been allocated to support critical humanitarian operations in countries affected by armed violence and conflicts. The Democratic Republic of Congo (DRC), the Occupied Palestinian Territory (oPt), Sudan and Yemen have received the largest amount of funding in response to **conflict-related crises** and collectively account for nearly half of CERF’s funding that has been allocated in response to conflicts. Some 37 per cent of the total resources have been allocated to address **climate-related crises** and other natural disasters. In addition, \$50 million (8 per cent) has been allocated to respond to **other drivers of humanitarian needs**, including to severe economic disruption and to human rights violations, and another \$6 million (1 per cent) was allocated in response to **disease outbreaks**.



Enabling critical humanitarian activities. While CERF has continued to enable a holistic response across all humanitarian sectors, the top funded sectors are food security (\$120M), health (\$75M), and water, sanitation and hygiene (\$65M).

¹ Afghanistan, Bangladesh, Burkina Faso, Cameroon, CAR, Haiti, Mozambique, Myanmar, oPt, Uganda/Karamoja, and Venezuela

ALLOCATION HIGHLIGHTS SINCE THE JUNE ADVISORY GROUP MEETING

Since the Advisory Group meeting in June 2023, CERF has responded to multiple emergencies worldwide. The below highlights some of the allocations made by CERF to address the humanitarian needs in Sudan, oPt, Libya, Yemen and DRC.

Sudan: The escalation of the conflict in mid-April aggravated an already dire humanitarian crisis. The number of people in need of humanitarian assistance surged by 60 per cent – from 15.8 million as of August 2023 to some 25 million people – and 5.3 million people were displaced in less than 150 days. CERF allocated \$22 million in July and an additional \$20 million in August in response to the escalating crisis. The objective of the allocations was to enable UN agencies and partners to ensure immediate and sustained implementation of life-saving services across all sectors, in areas where operations are possible, allowing the targeting of over two-thirds of the displaced people. The CERF allocations have been complemented by \$51.4 million from the Sudan Humanitarian Fund (SHF). The timing of CERF and SHF allocations released since mid-April has allowed partners to maintain the ongoing response efforts and adjust to the rapidly changing conditions despite uneven funding injections from donors.

The occupied Palestinian territory (oPt): In response to the escalating humanitarian crisis in Gaza, CERF swiftly launched a \$9 million allocation on 11 October to address urgent needs and support the scale-up of relief efforts as outlined in the OCHA-coordinated oPt response plan ('Flash Appeal'). CERF also fast-tracked an additional \$6 million UFE allocation for oPt that predated the 7 October events, which aimed to fill critical gaps in the ongoing response, including child protection, gender-based violence (GBV), mine action and emergency education. In addition, the oPt Humanitarian Fund allocated around \$13 million to local partners to distribute goods and services to people in the hardest-to-reach areas. The CERF and CBPF allocations have been designed in a complementary manner thanks to the active role of the Humanitarian Country Team members in ensuring an optimized use of available resources.

Libya: On 12 September, CERF allocated \$10 million to respond to the urgent humanitarian needs of people affected by Storm Daniel and flash floods in Libya. This allocation was strategically designed to address the immediate and critical humanitarian needs resulting from Storm Daniel's impact in line with the OCHA-coordinated Flash Appeal. It focuses on immediate life-saving assistance and filling in the gaps in the ongoing humanitarian response efforts aimed at preventing further loss of life and mitigating the impact of the flooding.

Yemen: As it enters its ninth year of conflict, over 3.3 million people in Yemen are facing hunger and malnutrition (IPC phase 3+ as of May 2023), and some 21.6 million people require protection and access to basic services. In August, CERF allocated \$20 million to rebuild the resilience of internally displaced persons (IDPs), returnees and displacement-affected communities and to scale up integrated service provision. The allocation supports a multisectoral approach to reintegration at the place of origin and sustainable local integration in locations hosting IDPs. An upcoming allocation from the Internal Displacement Solutions Fund (IDSF) will complement the CERF allocation by including intention surveys that will inform follow-up humanitarian activities aimed at promoting peaceful co-existence between returnees and host communities and helping create a conducive environment for longer-term settlement.

Democratic Republic of Congo: The resurgence of the security crisis in the East of the Democratic Republic of Congo is leading to a further deterioration of the humanitarian situation and a significant displacement of populations. In response, in August, CERF allocated \$13 million to enhance partner response capacity in the east of DRC. This allocation aimed to address the scale, complexity, and urgency of the crisis, with a focus on protection, gender-based violence (GBV), nutrition, food security, and combating measles and cholera epidemics through water, sanitation, and health interventions. Subsequently, on October 28, following the collapse of the ceasefire in the DRC, CERF allocated \$10 million to address the situation impacting 5.11 million people, supporting the operational plan of the Inter-Agency Standing Committee and aiming to scale up assistance.

Furthermore, in June, the Anticipatory Action Framework for cholera, developed in 2019, was activated in Tanganyika as the threshold was met. This triggered a \$750,000 CERF allocation to support health, water, sanitation, and hygiene-related interventions, specifically targeting over 100,000 people at risk of cholera. Through this anticipatory allocation, CERF anticipates saving more lives and enabling a more dignified response to the crisis.

CERF ALLOCATIONS SINCE LATEST ADVISORY GROUP MEETING (1 JULY – 1 DECEMBER 2023)

Country	Rapid Response US\$	Underfunded Emergencies US\$	Total Funds Allocated US\$	Percentage of Total
Sudan	42.0M		42.0M	14.4%
Afghanistan	15.0M	20.0M	35.0M	12.0%
Democratic Republic of Congo	23.0M		23.0M	7.9%
Yemen		20.0M	20.0M	6.9%
Haiti	9.0M	8.0M	17.0M	5.8%
Myanmar	\$7.0M	9.0M	16.0M	5.5%
Occupied Palestinian Territory	9.0M	6.0M	15.0M	5.1%
Ethiopia	12.5M		12.5M	4.3%
Bangladesh	4.0M	8.0M	12.0M	4.1%
Central African Republic	4.0M	6.5M	10.5M	3.6%
South Sudan	10.0M		10.0M	3.4%
Somalia	10.0M		10.0M	3.4%
Libya	10.0M		10.0M	3.4%
Burkina Faso		9.0M	9.0M	3.1%
Mali		8.0M	8.0M	2.7%
Venezuela		8.0M	8.0M	2.7%
Mozambique		6.5M	6.5M	2.2%
Cameroon		6.0M	6.0M	2.1%
Uganda		6.0M	6.0M	2.1%
Malawi		\$4.0M	4.0M	1.4%
Armenia	4.0M		4.0M	1.4%
Panama	3.5M		3.5M	1.2%
Djibouti	2.5M		2.5M	0.9%
Vanuatu	1.1M		\$1.1M	0.4%
Grand Total	166.6M	125.0M	291.6M	100.0%

2023 CERF ALLOCATIONS BY COUNTRY (AS OF 1 DECEMBER 2023)

Country	Rapid Response US\$	Underfunded Emergencies US\$	Total Funds Allocated US\$	Percentage of Total
Sudan	42.0M	18.1M	60.1M	9,4%
Afghanistan	33.0M	20.0M	53.8M	8,2%
Democratic Republic of Congo	23.8M	22.0M	45.8M	7,1%
Syrian Arab Republic	15.0M	25.0M	40.0M	6,2%
Yemen	18.0M	20.0M	38.0M	5,9%
Ethiopia	12.5M	23.0M	35.5M	5,5%
South Sudan	34.0M		34.0M	5,3%
Somalia	28.0M		28.0M	4,4%
Myanmar	17.0M	9.0M	26.0M	4,0%
Haiti	18.0M	8.0M	26.0M	4,0%
Chad	14.0M	9.0M	23,0M	3,6%
Burkina Faso	9.0M	9.0M	18,0M	2,8%
Bangladesh	10.0M	8.0M	18,0M	2,8%
Mozambique	10.0M	6.5M	16,5M	2,6%
Mali	7.0M	8.0M	15.0M	2,3%
oPt	9.0M	6.0M	15.0M	2,3%
Malawi	10.0M	4.0M	14.0M	2,1%
CAR	4.0M	6.5M	10,5M	1,6%
Türkiye	10.2M		10,2M	1,6%
Libya	10.0M		10.0M	1,6%
Nigeria	9.0M		9.0M	1,4%
Madagascar		8.5M	8.5M	1,3%
Kenya		8.0M	8.0M	1,2%
Lebanon		8.0M	8.0M	1,2%
Venezuela		8.0M	8.0M	1,2%
Peru	7.0M		7.0M	1,1%
Colombia		6.5M	6.5M	1,0%
Honduras		6.5M	6.5M	1,0%
Pakistan		6.5M	6.5M	1,0%
Cameroon		6.0M	6.0M	0,9%
Uganda		6.0M	6.0M	0,9%
Eritrea		5.0M	5.0M	0,8%
Egypt	5.0M		5.0M	0,8%
Armenia	4.0M		4.0M	0,6%
Panama	3,5M		3.5M	0,6%
Vanuatu	2.8M		2.8M	0,4%
Djibouti	2,5M		2.5M	0,4%
Rwanda	1.5M		1.5M	0,2%
Islamic Republic of Iran	1.0M		1.0M	0,2%
Zimbabwe	1.0M		1.0M	0,2%
Grand Total	\$371,417,977	\$271,112,367	\$642,530,344	100%



CENTRAL EMERGENCY RESPONSE FUND

Allocations in 2023

As of 1 December 2023

In 2023*, CERF allocated over **\$646.5 million** to support millions of people in need of urgent assistance in **40** countries

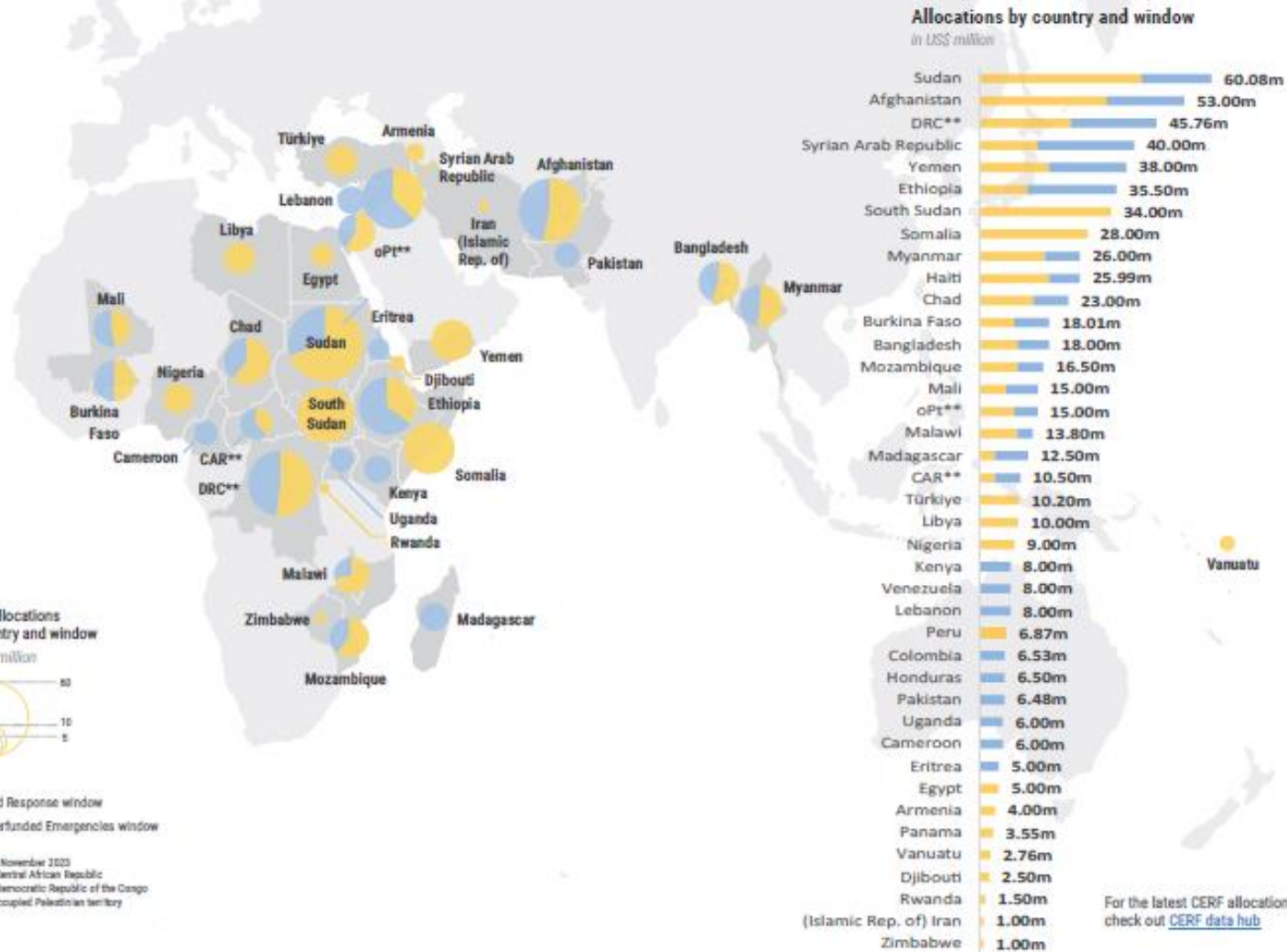


CERF allocations by country and window
in US\$ million



● Rapid Response window
● Underfunded Emergencies window

*As of 15 November 2023
** CAR - Central African Republic
DRC - Democratic Republic of the Congo
oPt - occupied Palestinian territory



For the latest CERF allocations check out [CERF data hub](#)