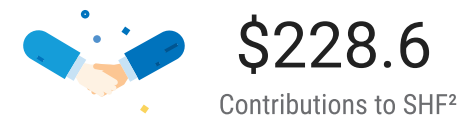


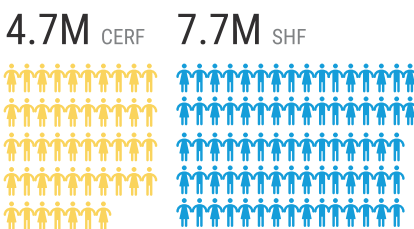
The OCHA-managed Pooled Funds have supported a fast and sustained humanitarian response to the humanitarian crisis in Sudan that has unfolded since fighting erupted between the Sudan Armed Forces and the Rapid Support Forces on 15 April 2023. The conflict has aggravated an already dire humanitarian crisis, causing the displacement of an estimated 8.4 million people in Sudan, forcing 3.2 million people to seek refuge in neighbouring countries, and leaving over half of the population facing crisis levels of food insecurity.¹ Through allocations totalling some \$382.7 million, the Central Emergency Response Fund (CERF) and the Sudan Humanitarian Fund (SHF) have ensured life-saving aid for over 7.7 million people across Sudan.

Enabling critical response in Sudan

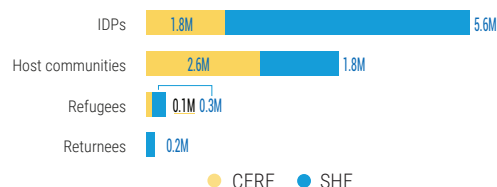
Funding from CERF and the SHF has ensured critical humanitarian support to the most vulnerable people affected by the conflict with much-needed health assistance, including sexual and reproductive services, nutrition, shelter, water, and protection services. The timing of allocations released by the Pooled Funds since mid-April 2023 has allowed response efforts to adjust to the rapidly changing conditions, and to be maintained steady, despite varying levels of donor contributions.



People assisted by CERF and SHF in Sudan²

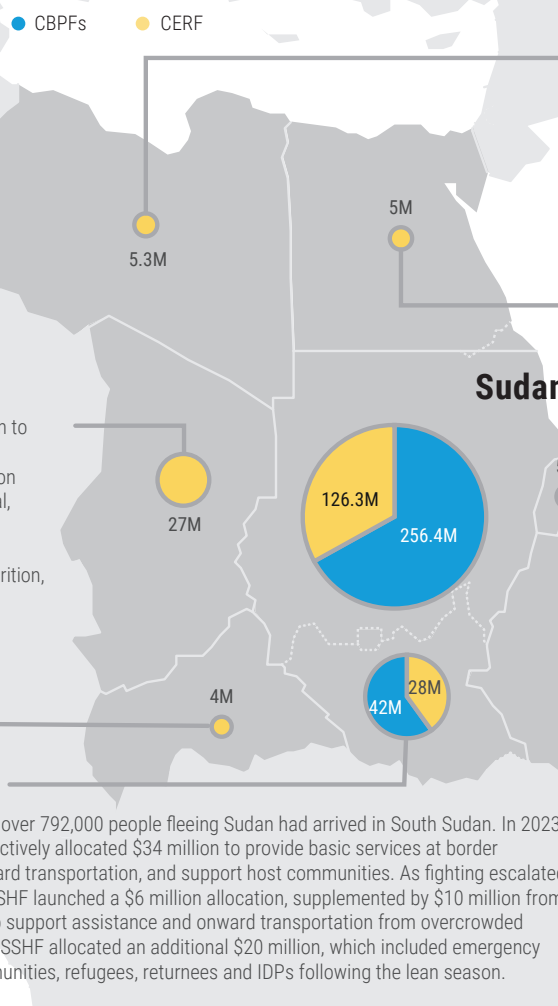


Support to people affected by displacement in Sudan²



CERF and Country-based Pooled Funds have provided funding to assist refugees and returnees who were forced to flee Sudan, as well as the people hosting them. Thanks to the funding provided by CERF and Country-based Pooled Funds in six neighbouring countries, humanitarian organizations have been able to provide food, water, shelter, and medication, as well as health, legal, relocation and other protection services to thousands of vulnerable people, including people with disabilities.

Supporting forcibly displaced people fleeing from Sudan



Chad

By mid-September, nearly 644,000 new arrivals had entered Chad. Within days, CERF allocated \$3 million to help step up humanitarian operations. As people continued to flee, CERF topped up the initial allocation with \$11 million in June 2023 to deliver multisectoral, life-saving aid to refugees, returnees, and host communities in the border area. In June 2024, CERF allocated \$13 million to support food aid, health, nutrition, and essential services for Sudanese refugees and displaced populations in Chad.

Libya

By mid-September 2024, 97,000 people fleeing Sudan had newly arrived in Libya. CERF helped humanitarian partners respond to the protection, health, and nutrition needs of both refugees and host communities through a \$5.3 million rapid response allocation.

Egypt

By early September 2024, 500,000 people fleeing hostilities in Sudan had arrived in Egypt. CERF provided a \$5 million allocation to support the most vulnerable, including through cash-based assistance at border crossings.

Eritrea

In July, the CERF allocated \$5 million to Eritrea for an urgent response to support Eritrean communities cope with an influx of Sudanese arrivals due to conflict. The funding is scaling-up the provision of basic services to host communities that are still recovering from drought, supporting them to continue generously assisting Sudanese arrivals.

Central African Republic

By mid-September, some 28,871 newly displaced people had arrived in CAR. CERF helped humanitarian partners respond to their priority needs, allocating \$4 million. The allocation focused on the provision of life-critical aid, particularly to the food-insecure host communities.

South Sudan

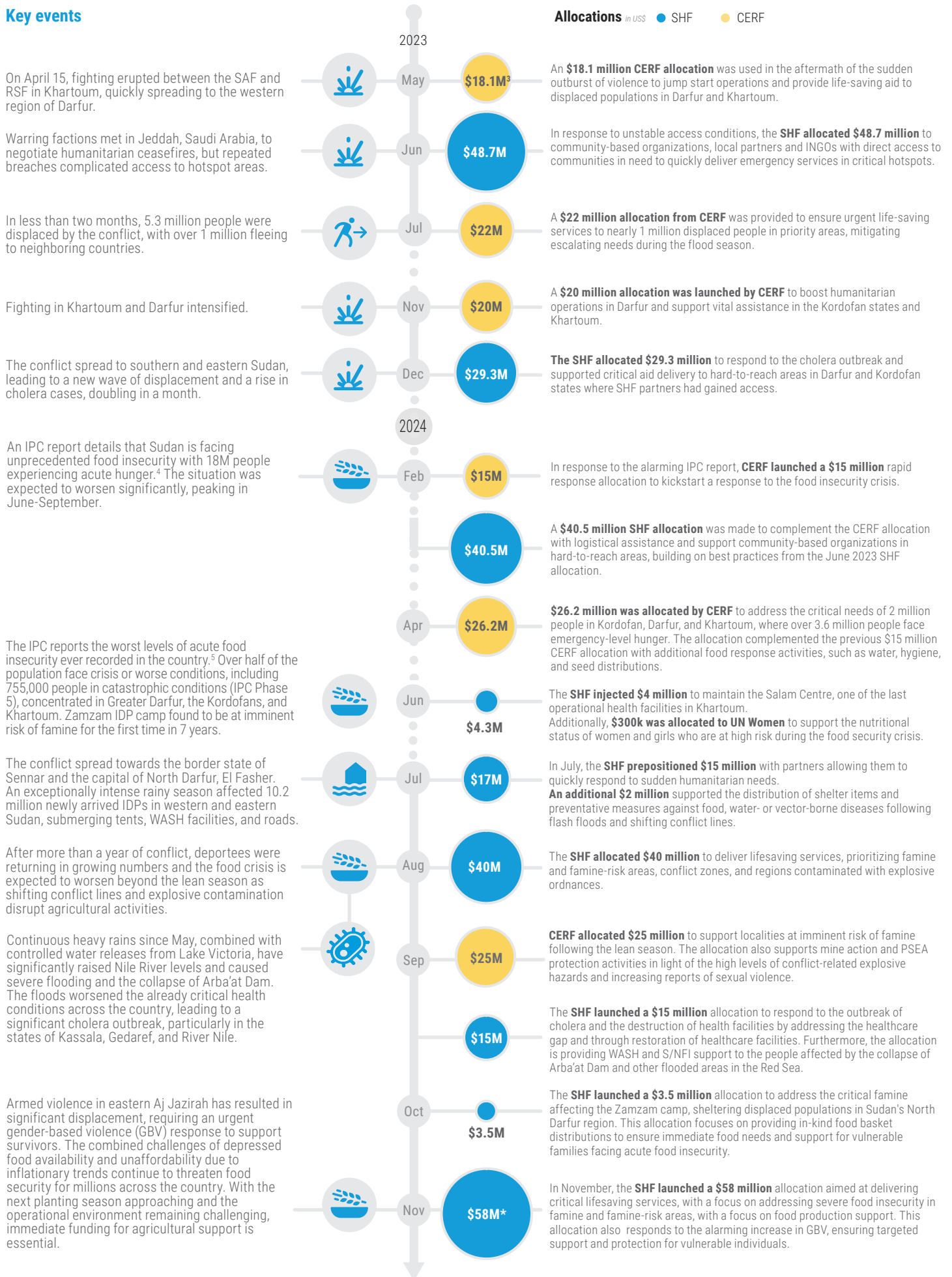
By mid-September 2024, over 792,000 people fleeing Sudan had arrived in South Sudan. In 2023, the SSHF and CERF collectively allocated \$34 million to provide basic services at border crossings, facilitate onward transportation, and support host communities. As fighting escalated in December 2023, the SSHF launched a \$6 million allocation, supplemented by \$10 million from CERF in January 2024, to support assistance and onward transportation from overcrowded camps. In July 2024, the SSHF allocated an additional \$20 million, which included emergency assistance to host communities, refugees, returnees and IDPs following the lean season.

Ethiopia

By mid-September, over 60,000 people fleeing fighting had newly arrived in Ethiopia. CERF helped respond to their priority needs, allocating \$5 million to humanitarian partners.

¹ DTM Sudan Mobility Overview (as of 06 November 2024) <https://dtm.iom.int/reports/sudan-mobility-overview-3>
² Covers the period between April 2023 and November 2024. Please note that the SHF launched an allocation in November 2024, and all associated data is currently considered an estimate, subject to refinement as implementation unfolds.

Key events



³ Date reflects project disbursement date, UFE allocation originally endorsed in March 2023.

⁴ IPC Sudan Acute Food Insecurity Projection (October 2023-February 2024) <https://www.ipcinfo.org/ipc-country-analysis/details-map/en/c/1156730/>

⁵ IPC Sudan Acute Food Insecurity Snapshot (April 2024-February 2025) https://www.ipcinfo.org/fileadmin/user_upload/ipcinfo/docs/IP-C_Sudan_Acute_Food_Insecurity_Snapshot_Jun2024_Feb2025.pdf

* Launched amounts, project allocations in progress.

** Allocations endorsed, reprogrammed or launched between May 2023 and end of September 2024. By end of November 2024, in response to the rapidly evolving events, development of multiple SHF allocations is being explored and CERF is monitoring the situation. For up-to-date information on the Pooled Funds' support to humanitarian operations in Sudan, visit pfi.unocha.org.



Women and girls can access reproductive health services in UNFPA's mobile clinics. Photo: UNFPA

Delivering health care in the world's largest displacement crisis

In June 2023, after months of shelling in Khartoum, Lubna, a 34-year-old mother, had finally gathered enough money to flee the city with her family. At seven months pregnant, she endured a grueling 15-hour bus ride to Kosti, seeking refuge at a school in the Ezzedine displacement site.

Amid the violence in April 2023, millions fled Khartoum. With CERF funding, UNFPA swiftly deployed mobile clinics to displacement sites, providing gynecological care to women and girls. Upon her arrival in Kosti, Lubna received medication, frequent pregnancy checks, and psychosocial support.

On 12 September, Lubna safely delivered a healthy baby girl.

[Read more about the impact of the Pooled Funds on StoryHub](#)

#OCHAthanks the generous contributions of all donors to the Sudan Humanitarian Fund*



*Donors in 2023 and 2024

The Pooled Funds will continue to support humanitarian operations based on available resources and access. Sudan has been the largest recipient of CERF and CBPF contributions in 2024, as well as CERF contributions in 2023. However, given the volatile situation in Sudan, the need for additional contributions is critical. With increased support, the Pooled Funds will be able to further expand and sustain essential humanitarian activities to ensure targeted and prioritized lifesaving support.

[Donate to the Sudan HF](#)

[Donate to CERF](#)