

DROUGHT IN SOUTHERN AFRICA

Central Emergency Response Fund support in 2019-2020

As of 21 April 2020

From late 2018 until March 2020, several countries in Southern Africa were affected by severe drought due to below average or erratic rainfalls and extreme temperatures. Resulting reductions in the crop and livestock production led to food insecurity, and exacerbated health vulnerabilities, malnutrition, and protection issues.

More than 18 million people were affected in Angola, Lesotho, Malawi, Mozambique, Namibia, Zambia and Zimbabwe. Lesotho declared a new drought emergency in October 2019, while national drought emergencies in Mozambique and Namibia were extended to March 2020.

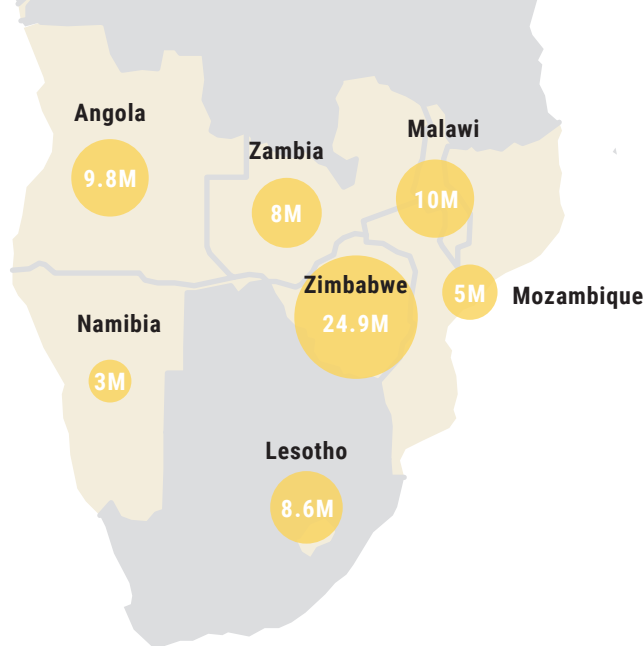
In response, between January 2019 and March 2020, CERF allocated some US\$69.3 million through CERF's Rapid Response window targeting a total of more than 3.7 million people in the seven countries.* Funds enabled partners to provide life-saving assistance covering urgent water, sanitation, food, agriculture, health, nutrition, protection and education needs.

* Angola, Lesotho and Zimbabwe received two consecutive allocations each. Some beneficiaries may therefore have been targeted twice with assistance.






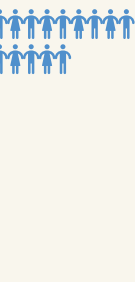
\$69.3 million
CERF allocations to Southern Africa drought response

ALLOCATIONS BY COUNTRY in US\$ millions

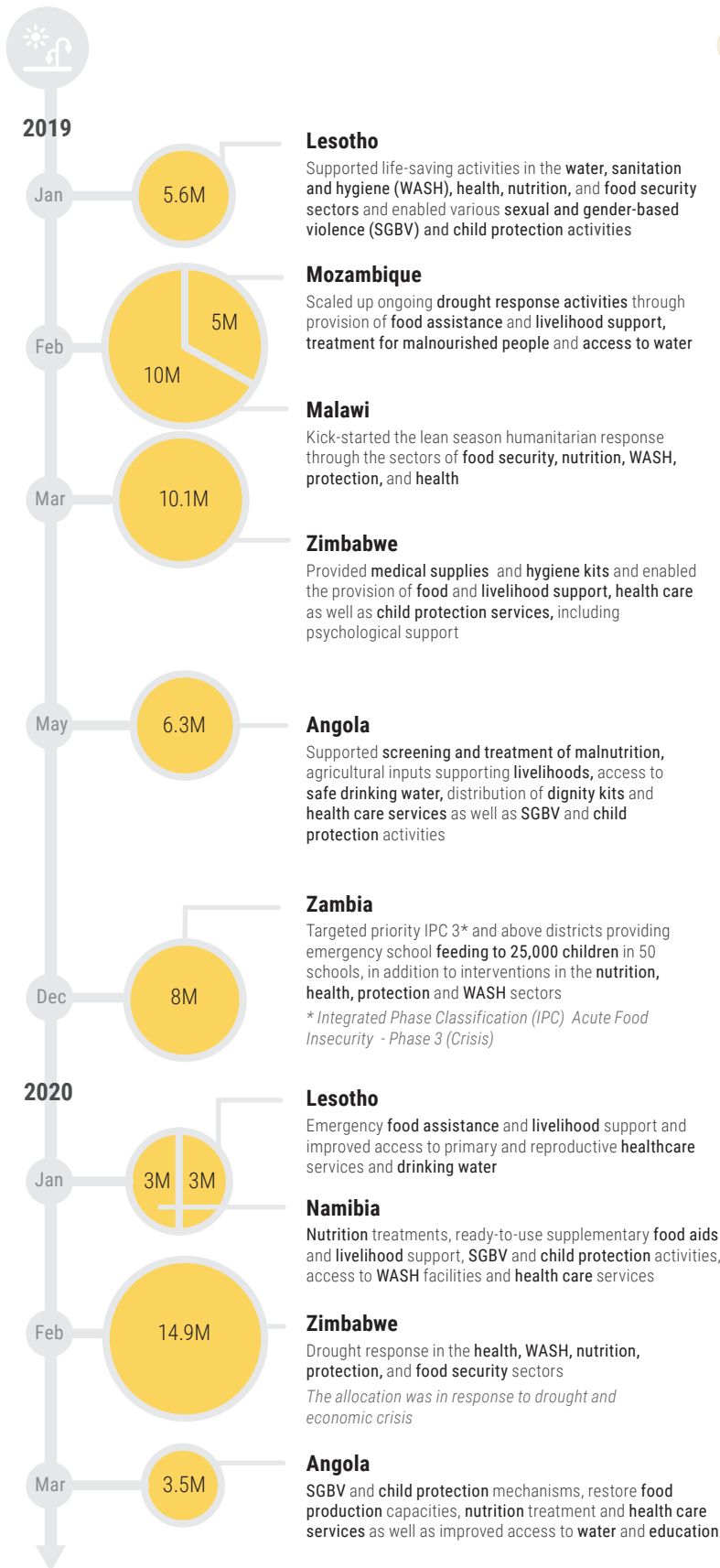


3.7 million
people targeted

PEOPLE TARGETED AND AFFECTED BY COUNTRY

Zambia	Angola	Malawi	Zimbabwe	Lesotho	Namibia	Mozambique
738k / 2.3M	734k / 2.9M	683k / 683k	637k / 11M	528k / 828k	267k / 429k	156k / 815k
<small>People targeted</small>	<small>People affected</small>					
						

ALLOCATIONS TIMELINE in US\$ millions



CERF TIMELINESS

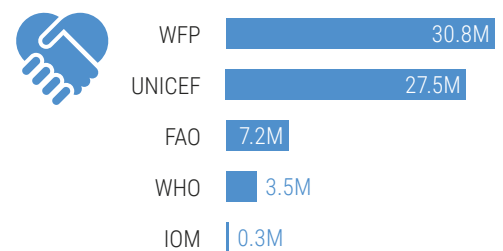
To support the most urgent and time-critical life-saving assistance in response to a new emergency, CERF rapid response grants allow UN agencies to set project start dates up to six weeks prior to disbursement. This enables them to include immediate relief activities that started before formal allocation approval.

ALLOCATIONS BY SECTOR in US\$ millions



* Protection includes general protection, child protection, and protection against sexual and/or gender-based violence

ALLOCATIONS BY AGENCY in US\$ millions



The boundaries and names shown and the designations used on this map do not imply official endorsement or acceptance by the United Nations.