



OCHA

CENTRAL AFRICAN REPUBLIC

COMPLEMENTARY USE OF POOLED FUNDS

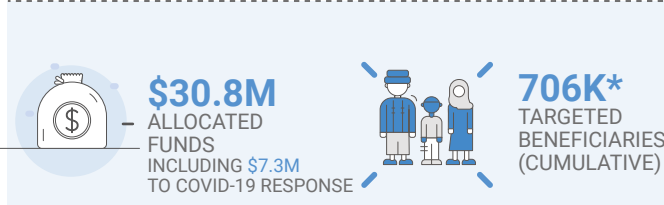
As of 11 November 2020

As of 11 November, the 2020 Humanitarian Response Plan has received **\$349.7** million out of **\$553.6** million required. The CERF and the CAR Humanitarian fund have played a critical and complementary role in support of an effective coordinated and decentralized response and have allowed humanitarian partners to scale up urgent life-saving assistance and services to those most in need in a timely and principled manner. With a total amount of **\$38.1** million in the first 10 months of the year, pooled funds contributed to **11%** of the overall amount of funding received against the 2020 HRP.

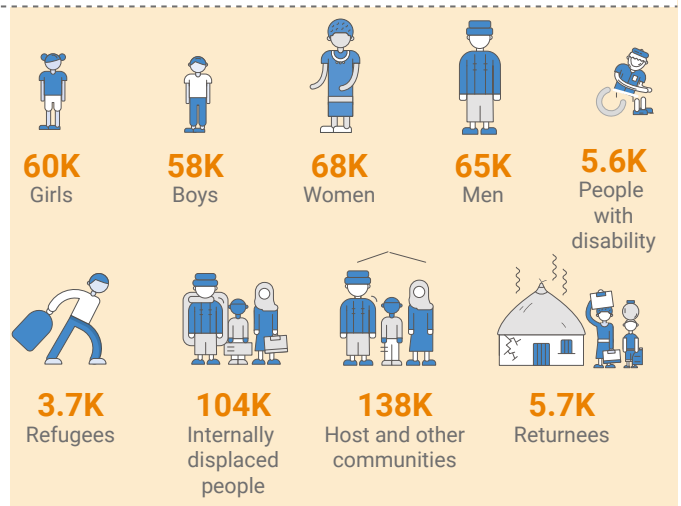
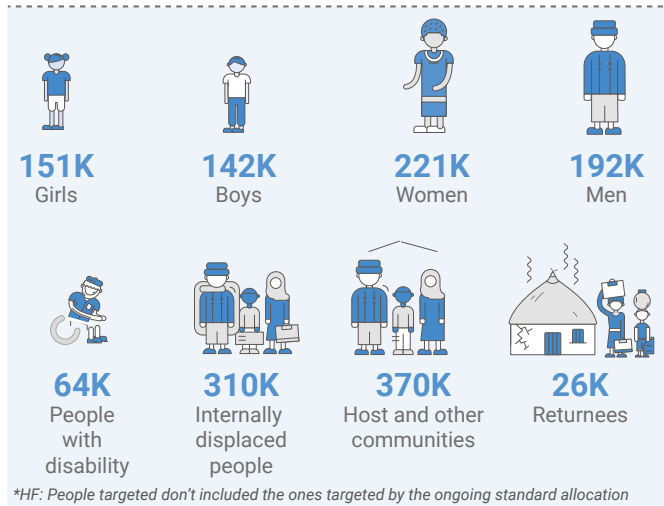
CAR HUMANITARIAN FUND (CAR HF)

CENTRAL EMERGENCY RESPONSE FUND (CERF)

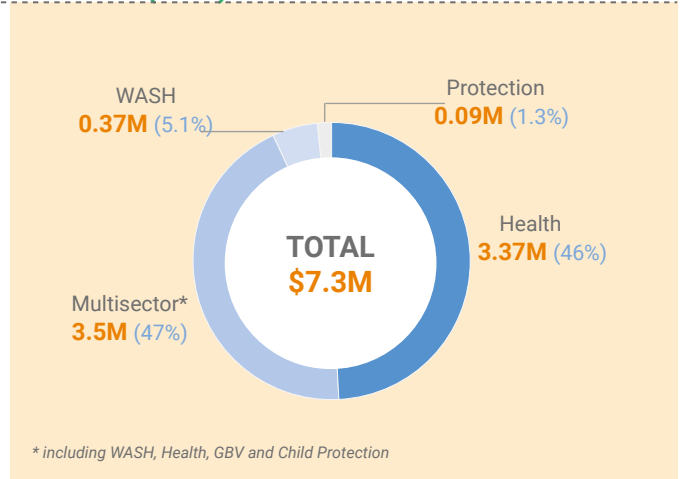
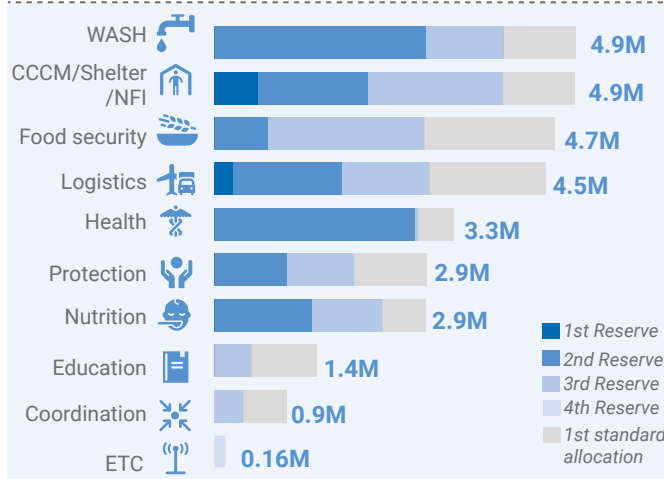
KEY FIGURES



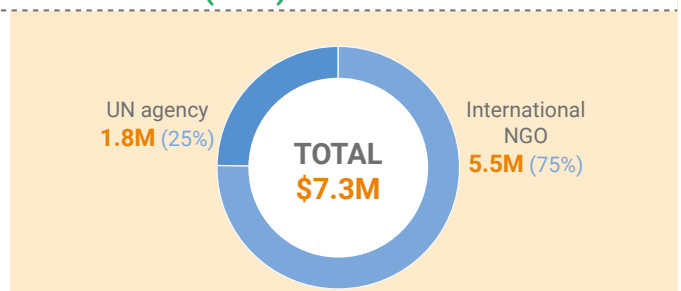
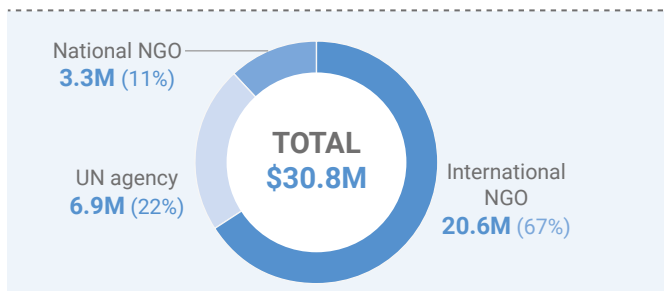
PEOPLE TARGETED



ALLOCATION BY CLUSTER (USD)



ORGANIZATION FUNDED BY TYPE (USD)





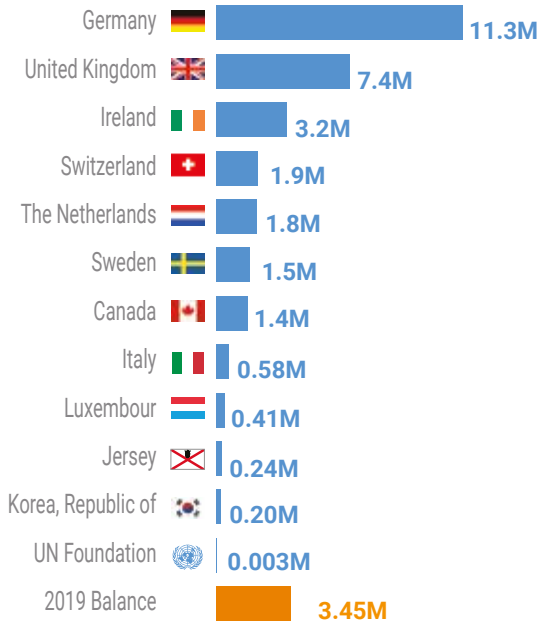
CENTRAL AFRICAN REPUBLIC

COMPLEMENTARY USE OF POOLED FUNDS

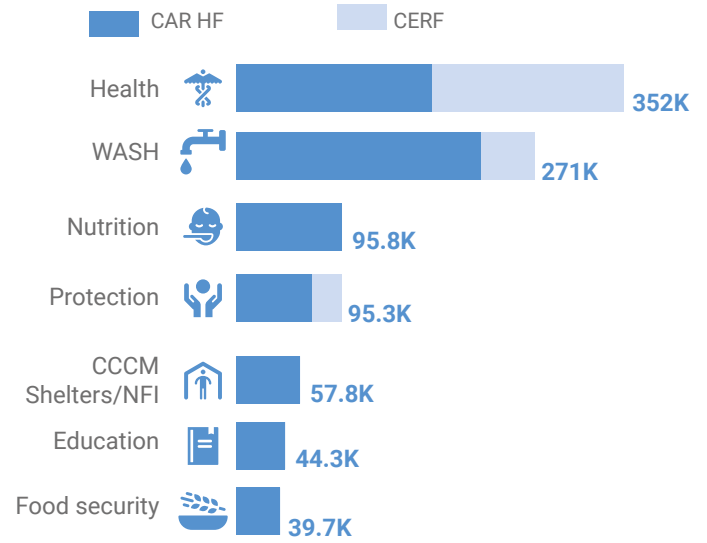
As of 11 November 2020

CAR HF DONORS

Received - US\$30.2M



PEOPLE TARGETED BY CLUSTER (CAR HF and CERF)



AREA TARGETED BY CAR HF AND CERF

