

# LAKE CHAD BASIN CRISIS

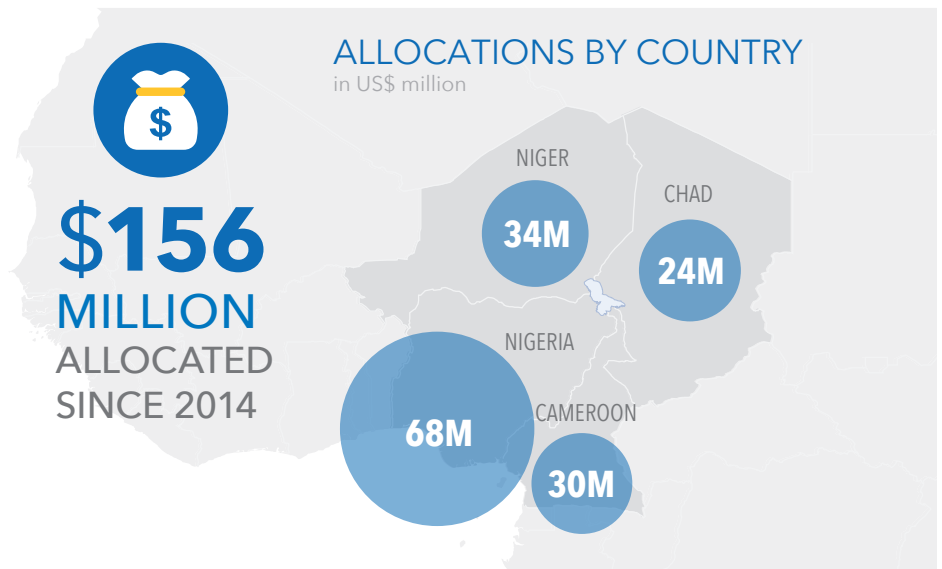
CERF allocation overview (2014-2017) As of 30 August 2017



United Nations  
**CERF**

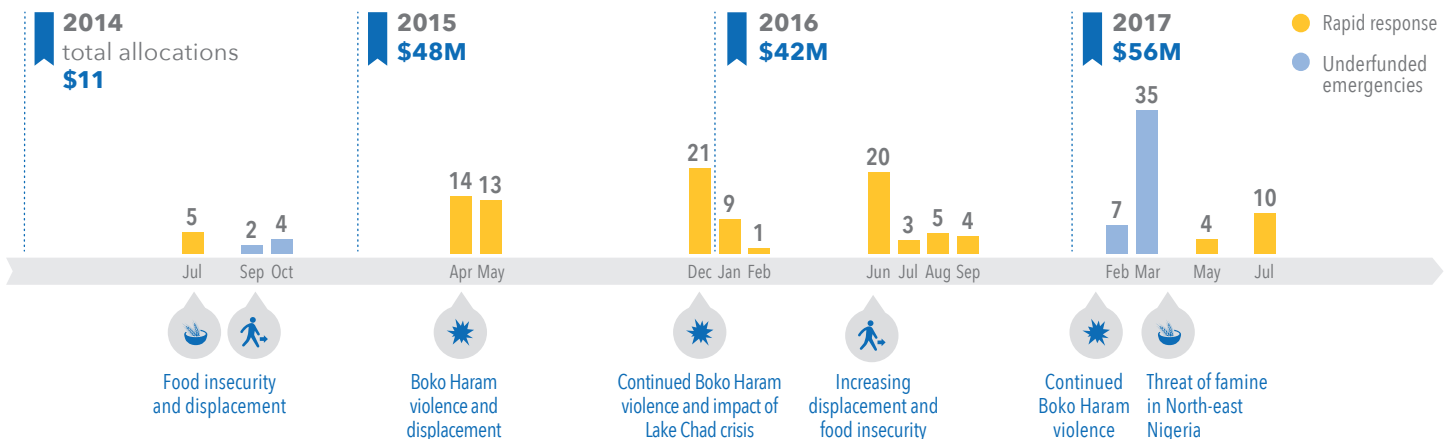
Central  
Emergency  
Response  
Fund

Over 10 million people across the Lake Chad Basin are in urgent need of humanitarian assistance.<sup>1</sup> Since 2014, CERF has provided nearly \$156 million for life-saving humanitarian assistance to people affected by the conflict and deepening food crisis. With the support of CERF's rapid response and underfunded emergency funds, humanitarian partners have been providing life-saving assistance and protection for the most vulnerable people - internally displaced, returnees, refugees and host population - affected by Boko Haram and military operations.



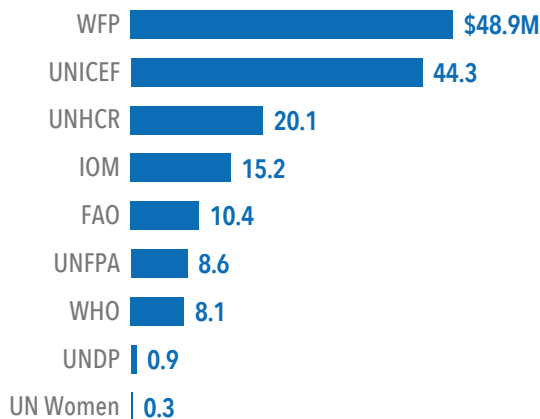
## ALLOCATIONS TIMELINE

in US\$ million



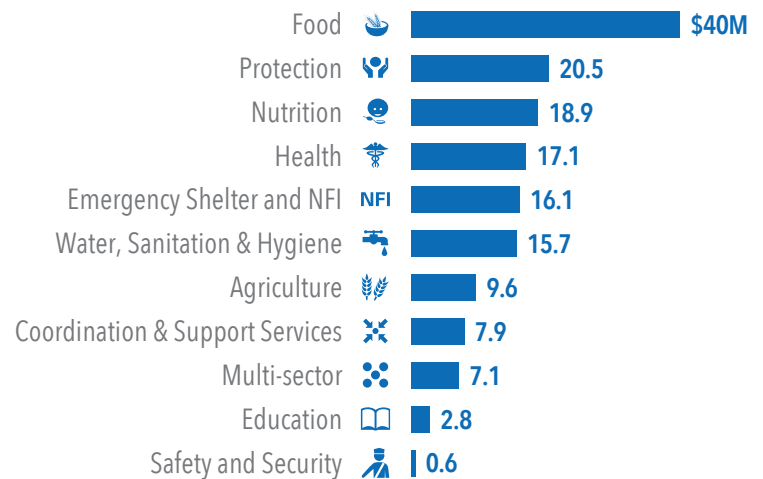
## ALLOCATIONS BY AGENCY

in US\$ million



## ALLOCATIONS BY SECTOR

in US\$ million



The boundaries and names shown and the designations used on this map do not imply official endorsement or acceptance by the United Nations.