

# HORN OF AFRICA

CERF early action to 2017 drought As of 5 May 2017



United Nations  
**CERF** | Central  
Emergency  
Response  
Fund

The Horn of Africa is facing one of the worst droughts in decades, leaving more than 14 million people in Ethiopia, Kenya and Somalia in urgent need of food assistance. Extensive crop failures, record low vegetation coupled with livestock death and limited water resources are affecting the region.

CERF has released a total of \$83.8 million to help more than 3 million people in Kenya, Somalia and Ethiopia. This includes a loan to FAO Somalia to ensure a scale up of famine prevention. Funds allow humanitarian partners to scale up mitigation measures, avert further loss of livelihood and respond to severe food insecurity and malnutrition. Affected people immediately receive access to water, health, nutritional and agricultural services. This CERF grant covers only a small portion of what is required to kick-start early action in response to rising hunger and malnutrition levels. More resources are urgently needed to avert a humanitarian catastrophe.

## POPULATION AFFECTED<sup>1</sup>



**14.4 million**  
people in need of  
**food assistance**



**15.7 million**  
people face acute  
**food security crisis**  
and **emergency**  
(IPC phase 3 or above)\*

\*Integrated Food Security Phase Classification (IPC) crisis: Food consumption gaps with high or above usual acute malnutrition.

## ALLOCATIONS IN 2017

in US\$ million



**\$83.8 million**  
CERF allocations to  
Horn of Africa



targeting  
**> 3 million**  
people



**\$2 BILLION**  
Funding requirements<sup>2</sup>

## EARLY INTERVENTION



Emergency food  
assistance



Supplementary feeding



Water trucking



Mobile health and  
nutrition clinics



Animal health



Destocking



Cash-based transfer



Therapeutic food



Emergency repair of  
water points

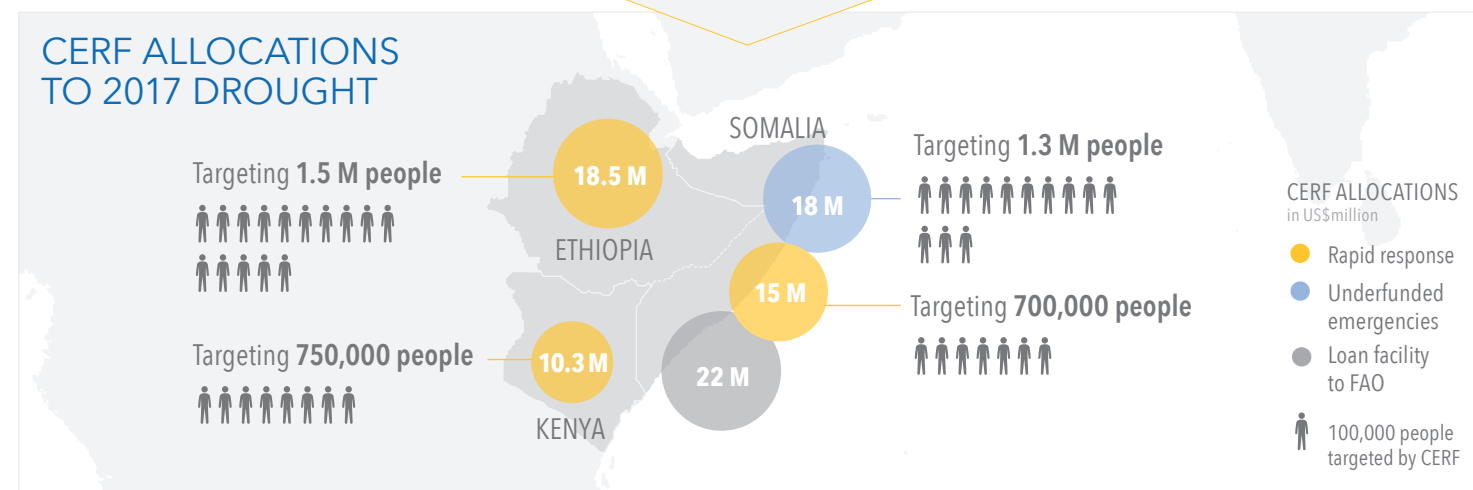


Disease surveillance  
and response



Survival livestock feed

## CERF ALLOCATIONS TO 2017 DROUGHT



The boundaries and names shown and the designations used on this map do not imply official endorsement or acceptance by the United Nations.

Creation: 5 May 2017 Source: CERF (5 May 2017), 1 2017 Somalia Humanitarian Response Plan, Ethiopia Humanitarian Requirements Document 2017, Kenya Flash appeal.

2 Financial Tracking Services (5 May 2017), UNCS

Feedback: [cerf@un.org](mailto:cerf@un.org) [cerf.un.org](http://cerf.un.org) [www.unocha.org](http://www.unocha.org)