

EBOLA VIRUS DISEASE

CERF and Country-Based Pooled Fund support in 2018-2019

As of 19 June 2019

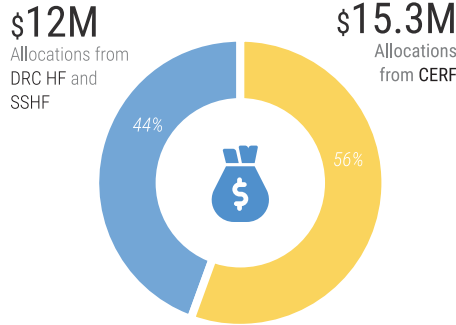
On 8 May 2018, the Democratic Republic of Congo (DRC) declared an Ebola Virus Disease (EVD) outbreak in Equateur province. Within 48 hours, the Emergency Relief Coordinator allocated \$2 million from the CERF rapid response (RR) window to kickstart immediate response activities to contain the epidemic, prevent its spread and facilitate access of medical teams and equipment to areas affected. The outbreak ended in late July 2018 with 54 cases and 33 deaths reported.¹

On 1 August 2018, the DRC declared another EVD outbreak in North Kivu Province, which then spread to adjacent Ituri province. This outbreak has claimed more than 1,450 lives out of over 2,180 cases reported,² including latest cases confirmed in neighbouring Uganda on 11 June 2019.³ CERF in August 2018 allocated \$2.8 million to scale up rapid response activities. Following the Inter-Agency Standing Committee (IASC)'s Humanitarian System-Wide Scale-Up activation on 29 May 2019 to address the continuing outbreak, the DRC Humanitarian Fund (HF) launched a reserve allocation through which \$10 million is being allocated to NGO partners to strengthen community engagement, cut transmission chains and mitigate the disease's impact on the affected population. CERF and the DRC HF are also supporting conflict-related and other humanitarian assistance in EVD-affected districts of DRC through additional funds to complement the Ebola response.

To boost EVD readiness capacities in high risk neighbouring countries of DRC, CERF allocated a total of \$10.5 million between December 2018 and January 2019 to Burundi, Rwanda, South Sudan and Uganda to support UN agencies' joint EVD preparedness and contingency plans. The South Sudan HF also allocated \$2 million in late 2018 to scale up EVD readiness activities in health and logistics sectors. These funds have supported surveillance at points of entry and other prevention and control activities, pre-positioning of medical supplies and equipment, community-based risk communication, and related logistics services.



\$27.3 million
CERF, DRC HF and SSHF allocations to EVD response and readiness in 2018 and 2019

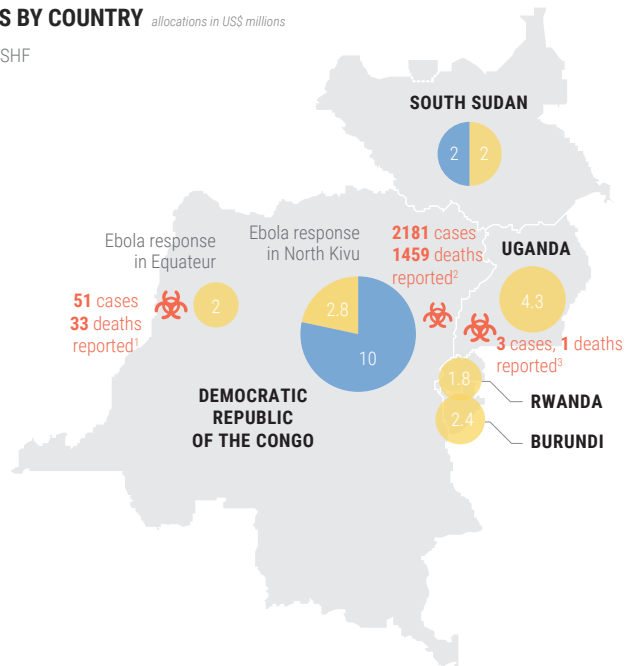


10.5 million
people targeted for assistance in 2018 and 2019



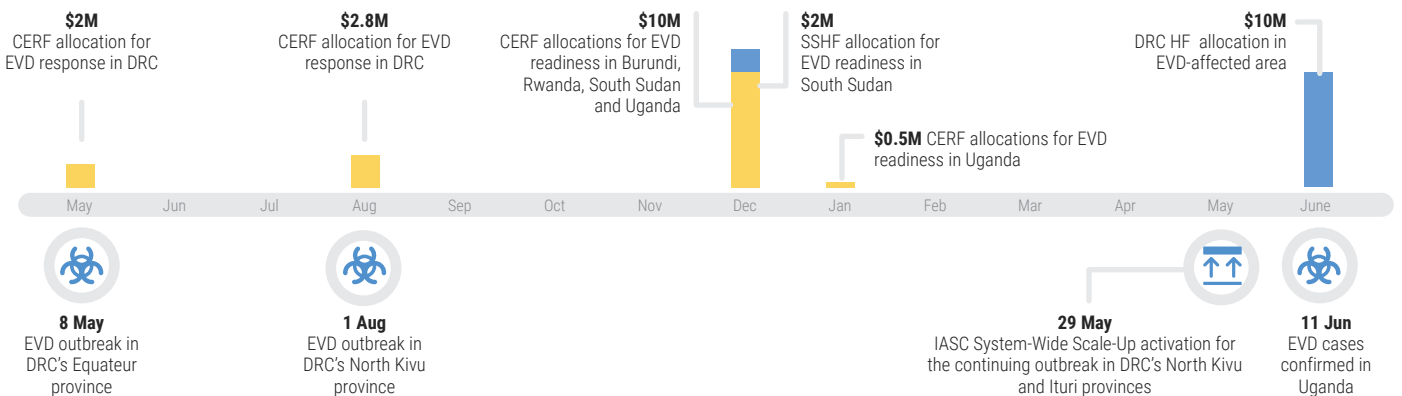
ALLOCATIONS BY COUNTRY

- DRC HF and SSHF
- CERF

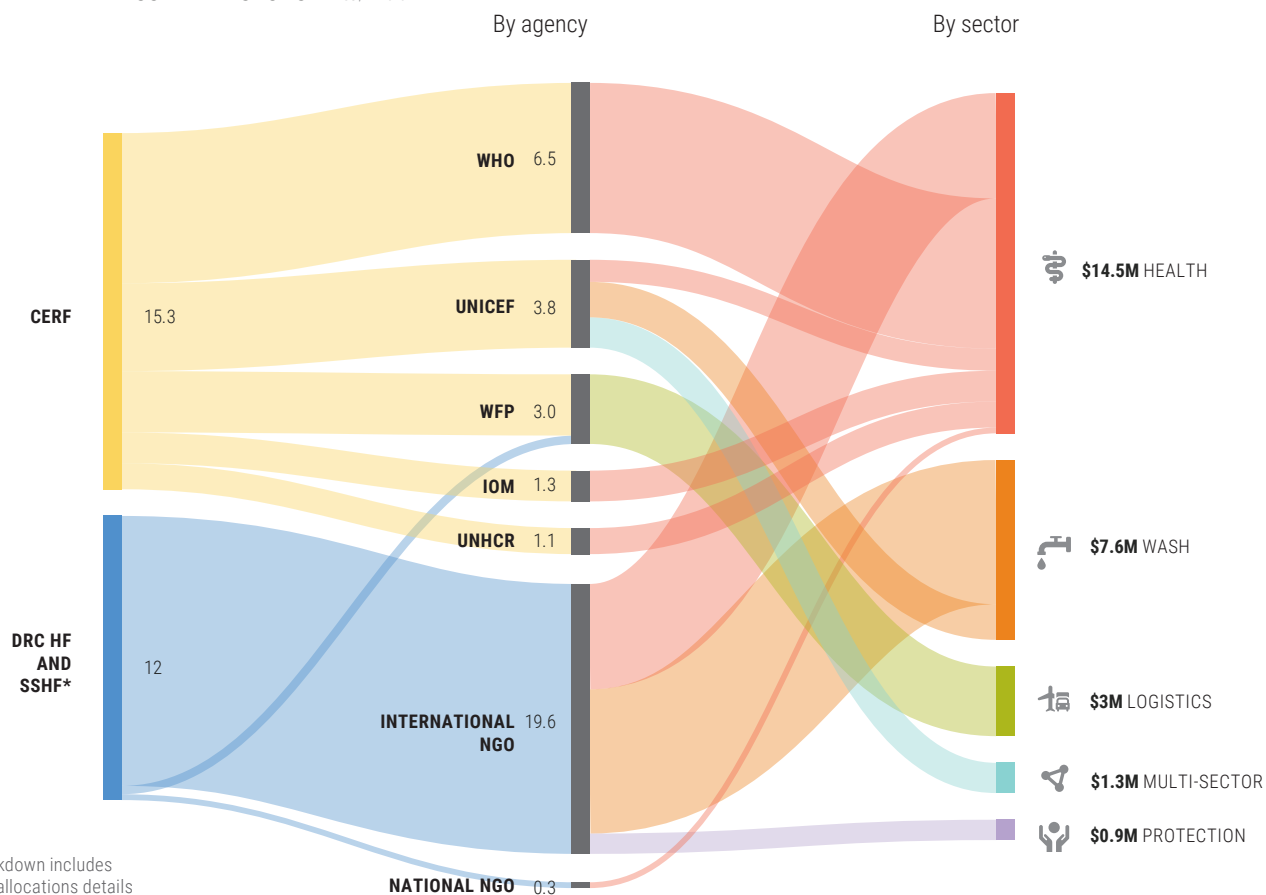


ALLOCATIONS TIMELINE

- DRC HF and SSHF
- CERF



COORDINATED PREPAREDNESS AND RESPONSE *in US\$ millions*



The funding breakdown includes ongoing DRC HF allocations details under review and may change slightly

CONTRIBUTIONS IN 2018 AND 2019

Country-Based Pooled Funds are funded by voluntary contributions from Governments and private donors. Between January 2018 and June 2019, donors contributed \$105.8 million to the DRC HF and \$123.6 million to SSHF.

DRC HF AND SSHF DONORS IN 2018 AND 2019 *in US\$ millions*

Donor	DRC HF	SSHF	Total
United Kingdom	36.5	28.4	64.9
Germany	19.5	21.1	40.6
Sweden	23.3	14.9	38.2
Netherlands	8.3	12.5	20.7
Norway	2.1	14.5	16.6
Ireland	3.7	9.3	13.0
Belgium	7.2	4.9	12.1
Denmark	6.9	0	6.9
Australia	5.4	0	5.4
Canada	4.4	0.6	5.1
Other donors*	0.9	5.1	6.0

* Switzerland 3.8 to SSHF; Korea (Republic of) 0.5 to DRC HF, 0.8 to SSHF; Luxembourg 0.4 to DRC HF, 0.4 to SSHF; UNF (Privated donations) 0.8k to DRC HF, 142k to SSHF.

For a complete overview of CBPF donors, go to: <https://pfb.unocha.org/>

Contributions include paid contributions and pledge.

Between January 2018 and June 2019, CERF received \$848.6 million in unearmarked contributions from UN member states and observers, regional authorities and private donors. CERF contributions are unearmarked and funds are allocated to meet the most urgent, life-saving needs in emerging and protracted crises globally.

CERF DONORS IN 2018 AND 2019 *in US\$ millions*

Germany	165.4
Sweden	160.2
United Kingdom	114.3
Norway	104
Netherlands	65.5
Canada	44.4
Denmark	44
Belgium	34
Ireland	25.3
Finland	17.7
Other donors*	73.9

* For a complete overview of CERF donors, go to: <http://bit.ly/CERFDONORS>