

FLOODS IN EAST AND CENTRAL AFRICA

Central Emergency Response Fund support in 2019-2020

As of 12 February 2020

Between June and December 2019, heavy rainfall across several countries in East and Central Africa led to severe flooding and landslides, leaving more than 2.1 million people in urgent need of assistance in Djibouti, Kenya, Republic of Congo, Somalia, South Sudan and Uganda.

In response, CERF allocated US\$40 million between December 2019 and January 2020, allowing partners in the six countries to deliver life-saving aid targeting 1.5 million people, including food, water, shelter and improved protection, sanitation, health and nutrition services.

Partners in Republic of Congo, South Sudan and Somalia received the highest amounts for flood responses from CERF since 2015.

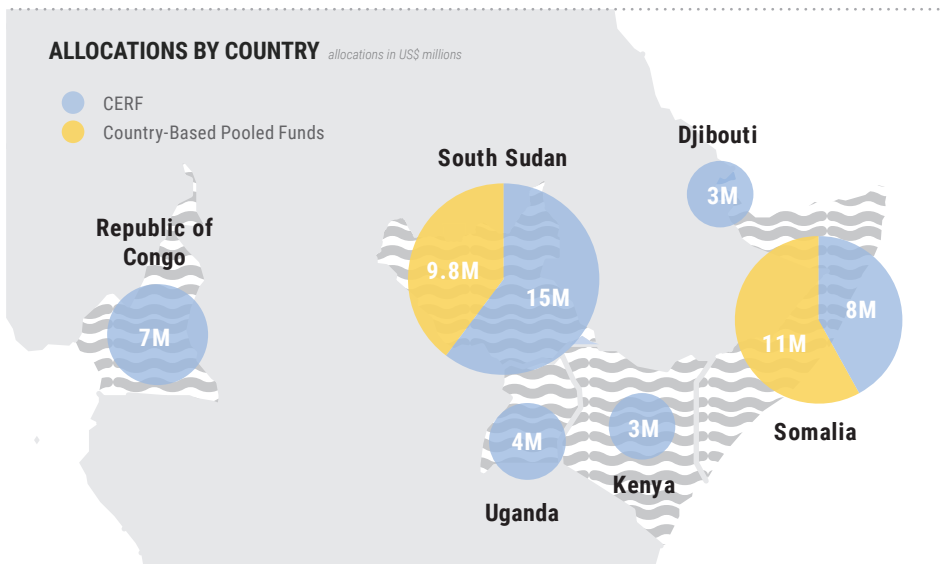
In Somalia and South Sudan, CERF allocations were closely coordinated with allocations from Country-Based Pooled Funds which are also managed by OCHA.



\$40 million
CERF allocations to East and Central Africa flood response



1.5 million
people targeted by CERF-funded aid



PEOPLE TARGETED BY CERF BY COUNTRY

South Sudan
570k / 900k



Uganda
230k / 311k



Kenya
222k / 300k



Somalia
178k / 540k



Djibouti
150k / 250k



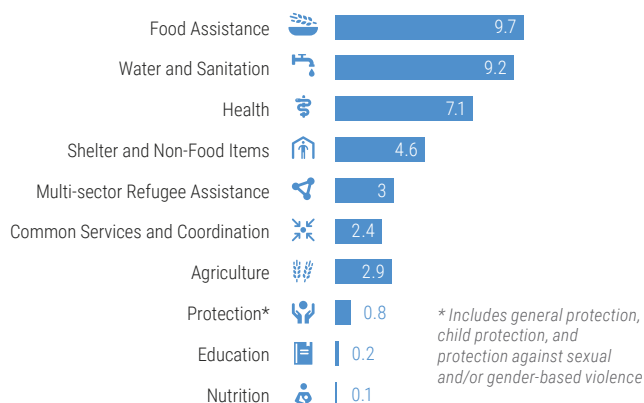
Republic of Congo
100k / 169k



People targeted by CERF funded aid
 People affected

CERF ALLOCATIONS BY SECTOR

in US\$ millions



CERF ALLOCATIONS BY AGENCY

in US\$ millions

