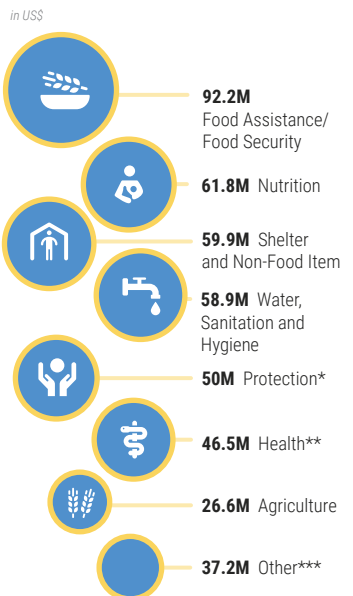


For more than 12 years, the Central Sahel region has been at the epicentre of conflict, insecurity, political instability, poverty and climate change. Converging crises, especially in the areas of protection, food security, and displacement, have escalated vulnerability to unprecedented levels, leaving some 34.2<sup>1</sup> million people in need of humanitarian assistance.

Since the beginning of 2020, OCHA's pooled funds – the Central Emergency Response Fund (CERF) and the Country-based Pooled Funds (CBPFs) – have allocated \$434 million to the Central Sahel region. Allocations from these Funds have been critical in the continued effort to tackle the food security and nutrition crisis, stave off famine, prevent disease outbreaks, mitigate the effects of COVID-19 and address the humanitarian consequences of flooding. This funding has also been instrumental in addressing protection concerns, including gender-based violence and reproductive health issues.

CBPF and CERF allocations to the Central Sahel region were done in synergy to maximize their impact and were strategically coordinated to ensure a regional approach to the crisis response.

### KEY SECTORS SUPPORTED

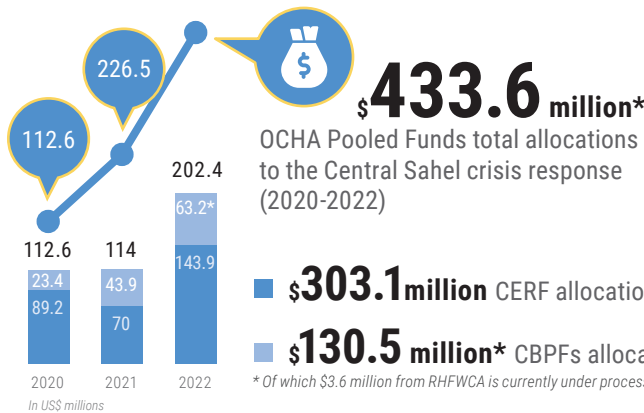


\* Includes: General Protection 28.9M; Child Protection 17.3M; and Protection against Sexual and/or Gender-based Violence 16.9M.

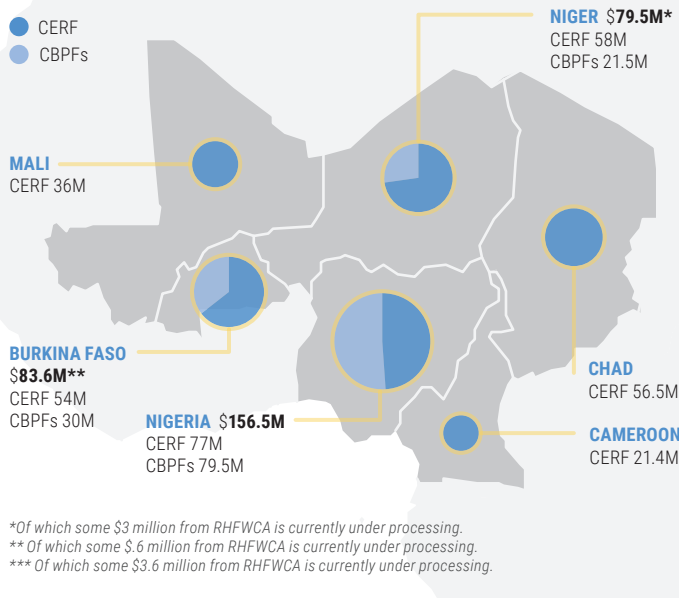
\*\* Includes General Health 42.5M and Sexual and Reproductive Health 3.4M

\*\*\* Other: Education 11.8M; Camp Coordination and Camp Management 5.3M; Mine Action 1.8M; Multi-purpose Cash 0.5M; and Early Recovery 2.3M; Coordination and Support Services 9.6M; Multi-Sector Refugee Assistance 6.2M.

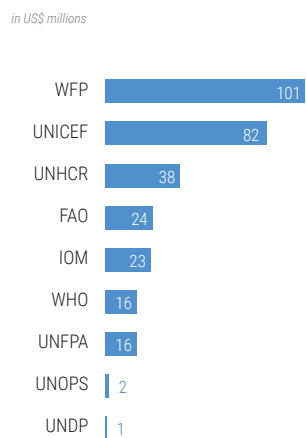
### ALLOCATIONS BY YEAR



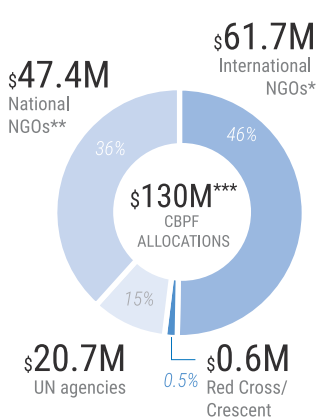
### ALLOCATIONS BY COUNTRY *in US\$*



### CERF ALLOCATIONS BY AGENCY *in US\$ millions*



### CBPF ALLOCATIONS BY PARTNER TYPE *in US\$*



Between 2020 and 2022, CERF allocated \$303 million for life-saving response in Burkina Faso, Cameroon, Chad, Mali, Niger and Nigeria. This included \$176 million through the rapid response window for immediate life-saving action in new and deteriorating situations, and \$127 million through the Underfunded Emergencies window to fill critical funding gaps in ongoing high-priority programmes.

In 2020-2022, CBPFs allocated over \$130 million towards humanitarian response in the Sahel, including through the Regional Humanitarian Fund for West and Central Africa (RHFWCA), which was created in 2021. By the end of 2022, the RHFWCA allocated \$51 million to Burkina Faso and Niger to support partners in addressing the nutritional crisis and the humanitarian consequences of flooding.<sup>2</sup>

In the same period, the Nigeria Humanitarian Fund (NHF) allocated \$79.5 million to enable life-saving assistance in the nutrition, food, shelter, health, education, protection, and water and sanitation sectors. These allocations strongly supported the localization agenda, with 47 per cent of funding going to local and national organizations in 2022.

In addition, in 2021, the Emergency Relief Coordinator selected Chad, Niger and Burkina Faso as pilot countries for the implementation of OCHA's Anticipatory Action (AA) frameworks. AA frameworks include an action plan that is implemented by UN agencies and their partners if agreed upon trigger conditions are met. The frameworks for the Sahel are supported by pre-agreed financing, primarily from CERF, representing a commitment of up to \$45 million for two years.

<sup>1</sup> People in need in Burkina Faso, Chad, Mali, Niger and Nigeria, source Global Humanitarian Overview 2023.

<sup>2</sup> Of which \$3.6 million from RHFWCA is currently under processing.