

OCHA POOLED FUNDS RESPONSE TO COVID-19

Pooled Funds (CERF & CBPFs) Response to COVID-19 PANDEMIC

As of 8 June 2020 - This document will be updated regularly

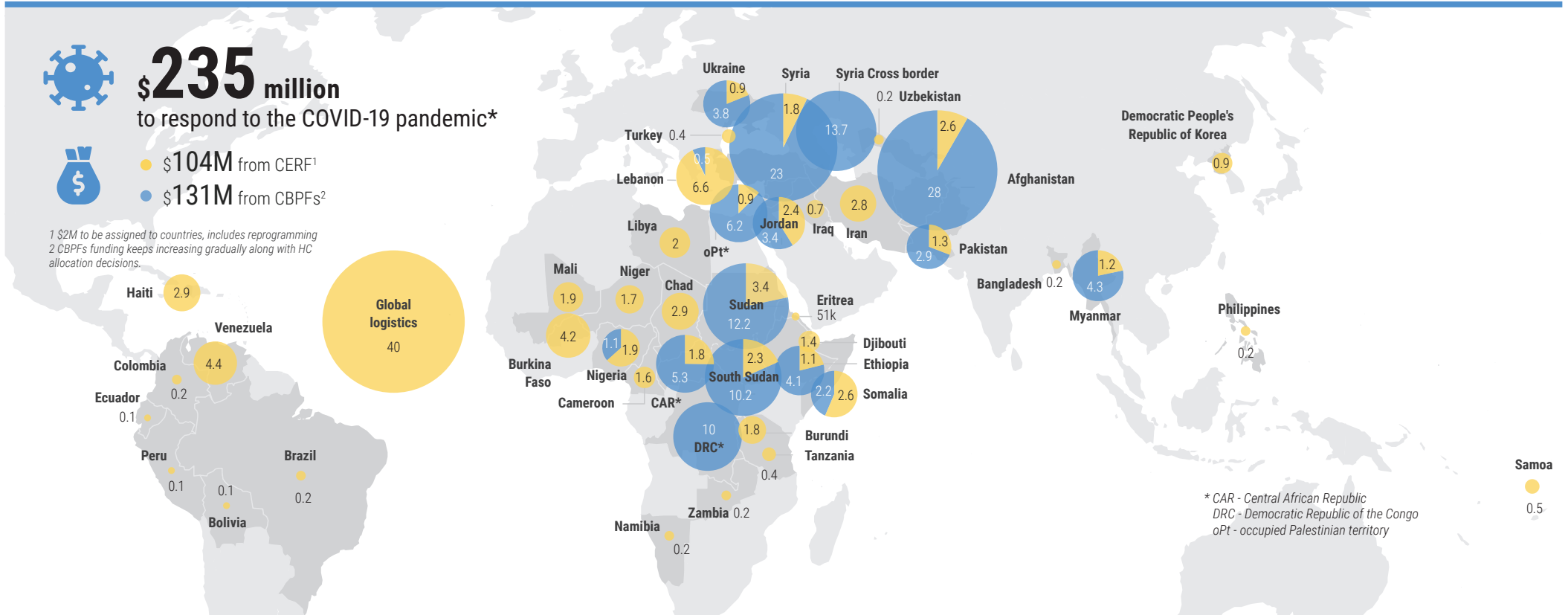


\$235 million
to respond to the COVID-19 pandemic*



- \$104M from CERF¹
- \$131M from CBPFs²

¹ \$2M to be assigned to countries, includes reprogramming
² CBPFs funding keeps increasing gradually along with HC allocation decisions.



CERF and CBPFs have provided a combined US\$235 million to COVID-19 pandemic responses. So far programmes in 42 countries have been supported through these funds and additional countries are being identified under the Global COVID-19 HRP. The allocations will save lives by scaling up preparedness and prevention measures, stopping the further transmission of the virus and mitigating the impacts of the pandemic.

CERF: CERF has released a total of \$104M – through 3 global allocations – to support humanitarian action in response to the pandemic. CERF funding will help support efforts to contain the spread of COVID-19, to ensure the continuity of critical health and humanitarian supply chains, to transport humanitarian workers and supplies, and to provide lifesaving humanitarian assistance and protection to the most vulnerable people affected by the pandemic, including women and

girls, disabled and elderly people, refugees and IDPs.

Additionally CERF has approved the reprogramming of \$8.6 million of on-going projects for COVID-19-related activities. Reprogrammed funds will be used to procure basic personal protective equipment and hygiene materials, adapting on-going humanitarian assistance projects to adhere to social distancing guidelines, and raising awareness about infection prevention and control measures

CBPFs: CBPFs responded early to the COVID-19 pandemic with the provision of a total of \$131 million to a broad range of partners. Sixteen country-based pooled funds have launched, or are in the process of releasing, an allocation to respond to the virus outbreak. CBPFs are providing flexible funding to all humanitarian partners to deliver a holistic response to all humanitarian needs including those compounded by the pandemic. CBPFs are particularly supporting prevention and preparedness

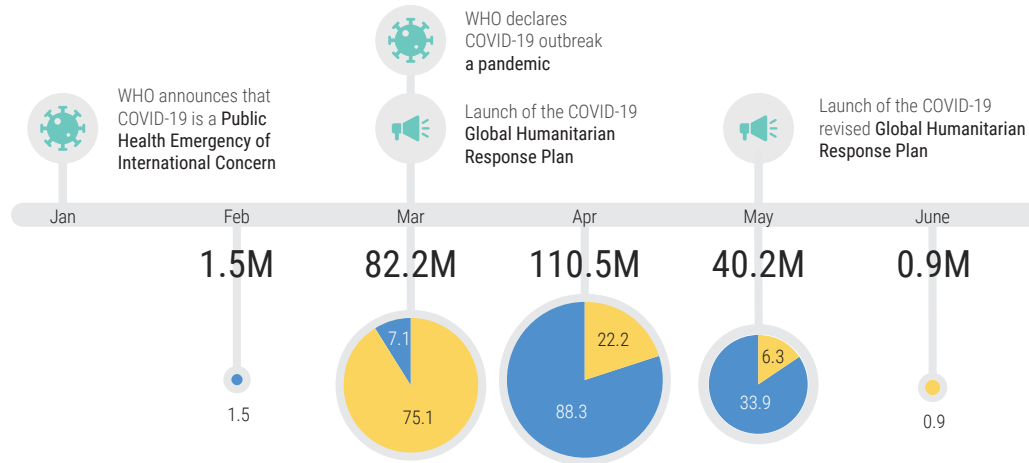
in particular community engagement, access to emergency health care and the delivery of essential services (food, cash, medical equipment) to the most vulnerable people, in particular people with specific needs: the elderly, women and girls, people with disabilities. Around 60 percent of CBPFs funding will be provided to NGOs, through direct grants (56%) and sub-grants from other agencies (4 percent).

* CAR - Central African Republic
DRC - Democratic Republic of the Congo
oPt - occupied Palestinian territory

CRISIS AND ALLOCATIONS TIMELINE in US\$ millions

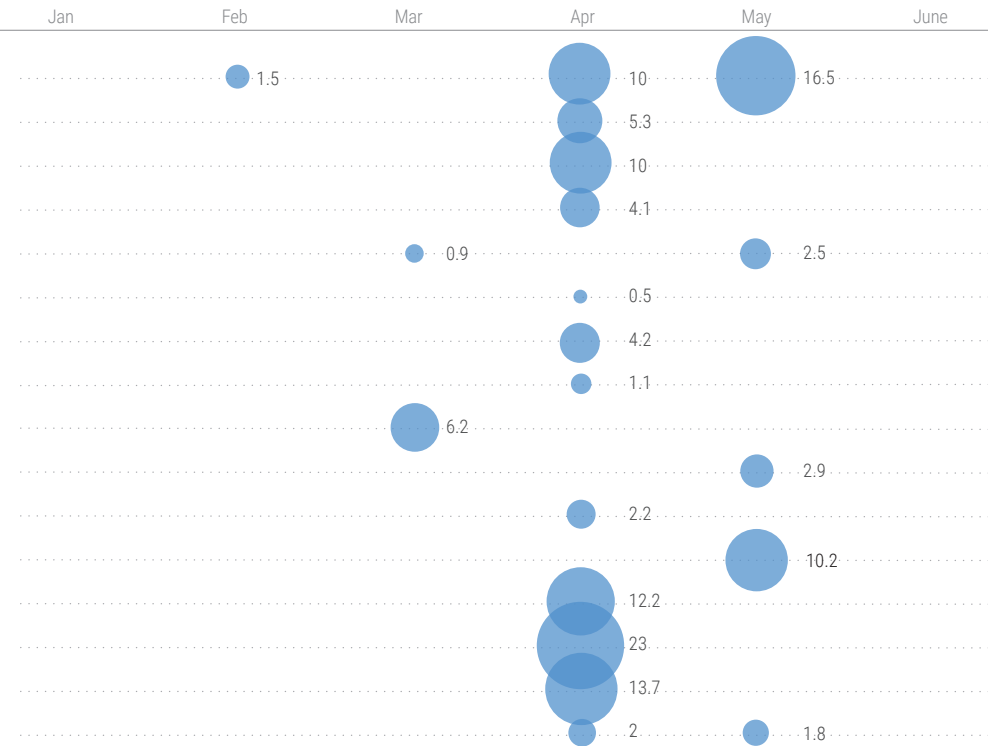
\$235 million
to respond to the COVID-19 pandemic since February 2020

- \$104M from CERF
- \$131M from CBPFs



CBPFS ALLOCATION

- Afghanistan HF 3 allocations \$28M
- CAR HF 1 reserve allocation \$5.3M
- DRC HF 1 reserve allocation \$10M
- Ethiopia HF 1 standard allocation \$4.1M
- Jordan HF 2 allocations \$3.42M
- Lebanon HF 1 reserve allocation \$0.5M
- Myanmar HF 1 reserve allocation \$4.2M
- Nigeria HF 1 reserve allocation \$1.1M
- oPT HF 2 allocations \$6.2M
- Pakistan HPF 2 allocations \$2.9M
- Somalia HF 1 reserve allocation \$2.2M
- South Sudan HF 2 allocations \$10.2M
- Sudan HF 2 allocations \$12.2M
- Syria HF 1 allocations \$23M
- Syria Cross-Border HF 1 reserve allocation \$13.7M
- Ukraine HF 2 allocations \$3.75M



DONOR CONTRIBUTIONS in US\$ millions

\$886.8M
Total contributions

- \$351.6M to CERF
- \$535.2M to CBPFs

Pooled fund allocations have been made possible thanks to timely investments of donors to CERF and CBPFs since the beginning of the year.

Their contributions allowed for substantial resources to be deployed immediately in support of humanitarian action in the context of COVID-19 when and where it was needed most. Several donors (indicated with an asterisk below) have also made additional pledges/contributions in the context of COVID-19; frontloaded funding planned for future years; or rapidly disbursed funding planned for later in the year.

DONOR	TOTAL CONTRIBUTIONS	TO CERF	TO CBPF
United Kingdom*	161.2M	-	161.2M
Germany*	141.1M	56.6M	84.6M
Sweden*	132.5M	72.8M	59.8M
Netherlands*	124.7M	77.0M	47.7M
Norway*	71.4M	50.3M	21.1M
Belgium*	48.4M	-	48.4M
Ireland*	42.6M	11.4M	31.1M
Canada*	40.4M	22.5M	17.9M
Switzerland*	26.2M	13.4M	12.7M
Australia*	21.7M	8.2M	13.5M
Denmark*	14.8M	-	14.8M
Korea (Republic of)*	11.5M	5.8M	5.7M
Finland	9.0M	9.0M	-
Qatar	6.2M	1000k	5.2M
Italy	5.5M	5.5M	-
Luxembourg	5.5M	5.5M	-
United Arab Emirates	5.0M	5.0M	-
France	4.3M	-	4.3M
New Zealand*	3.3M	2.0M	1.2M
Russian Federation	1.5M	1.5M	-
Kuwait	1M	1M	-
Iceland	990k	408k	582k
Japan	264k	264k	-
Poland*	254k	254k	-
Indonesia	220k	220k	-
Liechtenstein	200k	200k	-
Portugal	193k	193k	-
Estonia	166k	111k	55k
Monaco	111k	111k	-
Bulgaria*	109k	-	109k
Others**	5.2M	0.9M	6.1M

* These donors provided additional contributions in the context of COVID-19
 ** Other donors: Turkmenistan, South Africa, Philippines, Thailand, Cambodia, Bangladesh, Myanmar, Sri Lanka, Montenegro, Mongolia, Peru, Bhutan, Singapore, Saudi Arabia, United States, Turkey, Spain. Regional authority and International organizations donors: Baha'i International Community (National Spiritual Assembly), Basque Agency for Development Cooperation (Spain), Belgian Government of Flanders (Belgium), European Commission, Jersey (UK) and private donations.