

OCHA POOLED FUNDS RESPONSE TO COVID-19

Central Emergency Response Fund (CERF) and Country-Based Pooled Funds (CBPFs) Response to COVID-19 PANDEMIC

As of 26 March 2020 - This document will be updated regularly

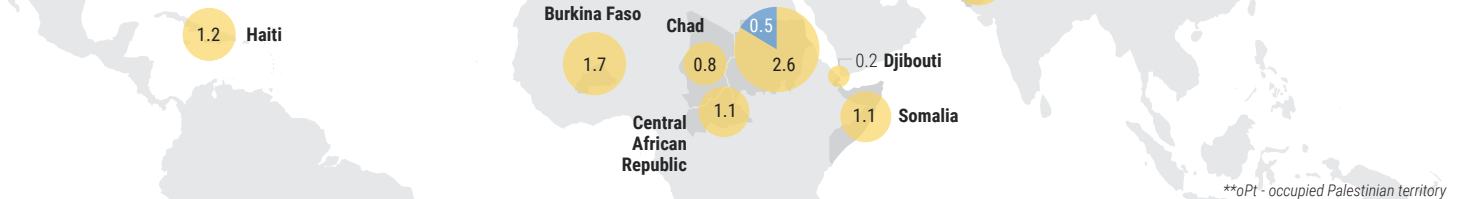


\$78.3 million
to respond to the COVID-19 pandemic*



● \$75M from CERF*
● \$3.3M from CBPFs

*The \$60M allocations have not yet been assigned to countries



CERF and CBPFs have disbursed a combined US\$78.3 million to COVID-19 pandemic responses in 15 countries. The allocations will save lives by scaling up preparedness and prevention measures, stopping the further transmission of the virus and mitigating the impacts of the pandemic.

CERF: On 1 March, the Emergency Relief Coordinator (ERC) released \$15 million from CERF's rapid response window to the UN Children's Fund (UNICEF) and the

World Health Organization (WHO). Funding will help WHO to carry out life-saving activities across eight priority countries, including response coordination, surveillance and case investigation, risk communication, and infection prevention and control. CERF funds will also enable UNICEF to mitigate the social and economic impacts of the epidemic, particularly on women and children.

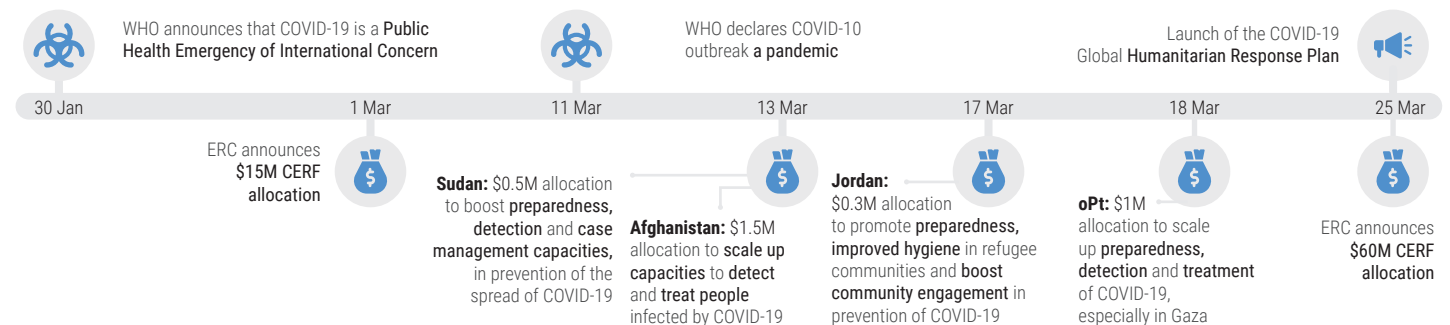
On 25 March, the ERC has also announced an additional allocation of \$US 60 million

to kick-start the global Covid-19 appeal. This will bring CERF's support to humanitarian action in response to the COVID-19 pandemic to \$75 million. UN agencies are in the process of identifying priority countries to receive CERF funds.

CBPFs: Based on an analysis of national contexts, the risk of outbreak and local health capacities, Humanitarian Coordinators and CBPF advisory boards in four countries launched allocations in

response to COVID-19. In Afghanistan, occupied Palestinian territory and Sudan, CBPFs are supporting WHO efforts in fighting the pandemic. In Jordan, the Jordan Humanitarian Fund is supporting UNICEF to boost preparedness and prevention measures in refugee communities. Other CBPFs are currently closely monitoring the situation in collaboration with WHO, humanitarian partners and health authorities in anticipation of potential allocations.

CRISIS AND ALLOCATIONS TIMELINE in US\$ millions



1.2 million
people targeted by CBPFs

Sudan 484,000



Afghanistan 464,000



Jordan 273,000



oPt 5,000



CERF data will be available shortly

ALLOCATIONS BY AGENCY in US\$ millions

*does not include recent \$60M CERF allocation

