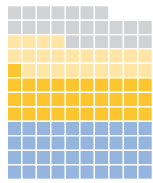


OVERVIEW OF CERF FUNDING TO FAMINE PREVENTION

As of 5 May 2017



Total funding
\$118 M



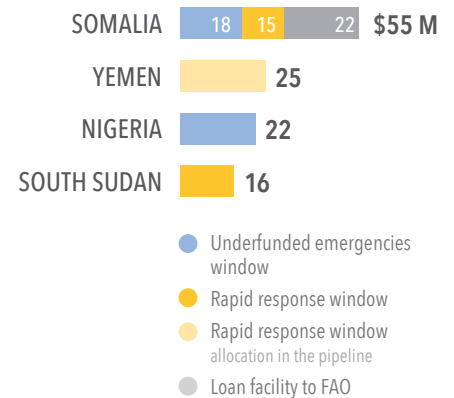
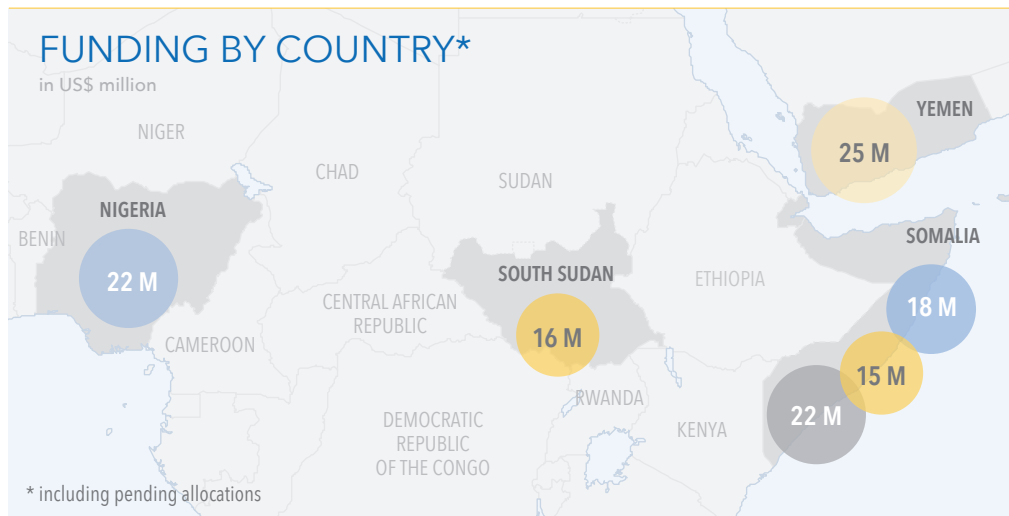
■ **\$40 M** underfunded emergencies window (UFE)

■ **\$31 M** rapid response window

■ **\$25 M** rapid response window allocation in the pipeline

■ **\$22 M** loan facility to FAO

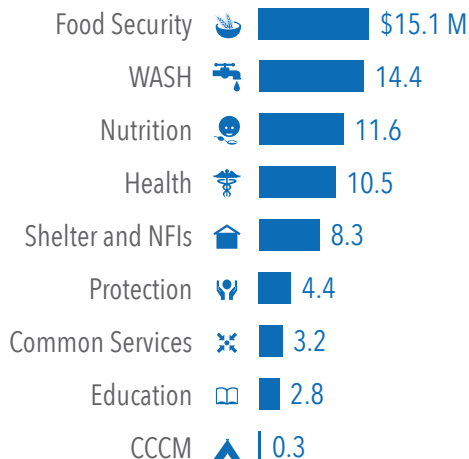
Over 20 million people in north-east **Nigeria**, **South Sudan**, **Yemen** and **Somalia** are already at or over the tipping point of famine. Thanks to the generosity of its donors, CERF has released \$93 million for early action and life-saving operations in Nigeria, Somalia and South Sudan. In north-east **Nigeria**, an allocation of \$22 million is reaching an estimated 2.9 million people affected by Boko Haram related violence and food insecurity. In **Somalia**, CERF has allocated \$33 million to help vulnerable people in severe drought areas in Puntland, Somaliland and South Central. FAO has also received a loan of \$22 million to ensure a scale up of famine prevention. In addition, **Yemen** will shortly receive \$25 million for famine prevention to focus on the provision of food, nutrition and health supplies, as well as necessary logistical and security support for all humanitarian partners. In **South Sudan**, CERF is allocating \$16 million to support humanitarian action in locations where famine or elevated risk of famine has been declared - as well as urgent needs in areas of new and/or active conflict. With these allocations, CERF will be the fourth largest funding source for humanitarian operations in the four affected countries.¹ Since 2006, CERF has enabled fast, flexible and time-critical assistance wherever, whenever crises hit.



FUNDING BY SECTOR

in US\$ million

Loan facility to FAO and allocations in the pipeline are not included.



PEOPLE TARGETED BY RAPID RESPONSE FUNDING

SOUTH SUDAN
525,000 PEOPLE



SOMALIA
352,592 PEOPLE

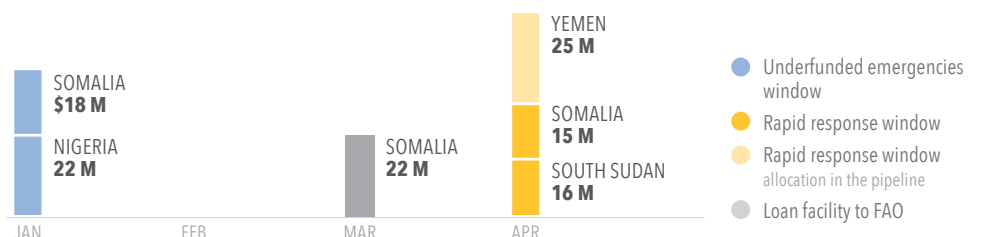


👤 = 100,000 people

Allocations in the pipeline are not included.

FUNDING TIMELINE*

in US\$ million



The boundaries and names shown and the designations used on this map do not imply official endorsement or acceptance by the United Nations.

Creation: 5 May 2017 Source: 1 Financial Tracking Service (as of 30 Apr 2017), CERF (5 April 2017), UNCS Feedback: cerf@un.org cerf.un.org www.unocha.org