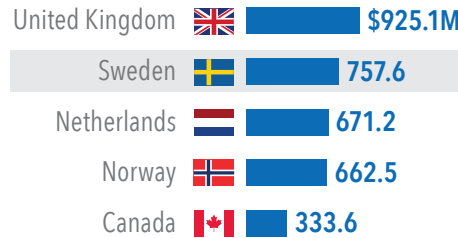


Sweden's humanitarian aid through the Central Emergency Response Fund (CERF)

Sweden's funding overview

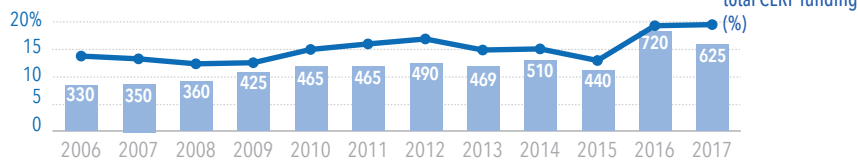
As the **second-largest donor** to CERF since 2006, Sweden is a strong and consistent political and financial supporter to the fund, contributing a total of **\$758 million (SEK 5.7 billion)** since 2006. On average, Sweden contributed **\$63.1 million each year**, which is approximately **15.2 per cent of the total contribution CERF has received in the past 12 years.**¹

CERF top 5 donors since 2006 in US\$ million¹



Sweden contributed **\$63.1 million** on average each year, or **15.2%** of the total contribution CERF has received in the past 12 years.

Sweden's contributions trend in SEK million¹

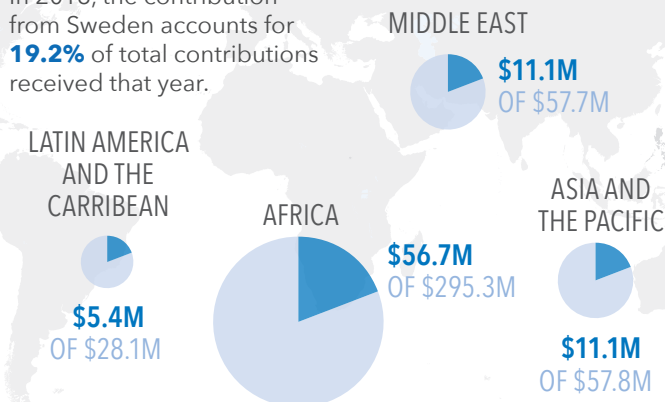


Sweden's global reach through CERF in 2016

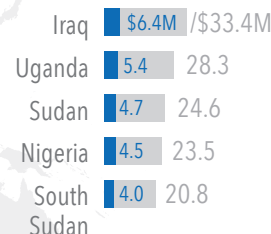
CERF offers donors high value for their money and fosters increased efficiency by providing timely and coordinated humanitarian support across the globe at **low transaction costs**. Sweden's emergency aid, through CERF, reached millions of crisis-affected people across **47 countries** in 2016.

Allocations by region attributed to Sweden's contribution in 2016

In 2016, the contribution from Sweden accounts for **19.2%** of total contributions received that year.



Sweden's contribution to CERF proportionally attributed to top 5 allocations in 2016 in US\$ million



Estimated number of people reached with Sweden's contribution to CERF in 2016

As CERF is a fully unearmarked humanitarian pooled fund, the contributions from individual donors cannot be tracked directly to specific allocations and results. However, to illustrate the impact of Sweden's contribution to CERF in terms of people assisted, its share of total 2016 contributions received can be applied to the number of people CERF reaches on average each year.²

SWEDEN'S CONTRIBUTION TO CERF IN 2016 HAS PROPORTIONALLY HELPED PARTNERS DELIVER:



Critical **health care** to **3.9 million** of the total **20 million** people reached



Water and sanitation to **2.5 million** of **13 million** people



Food assistance to **1.7 million** of **9 million** people



Agriculture support to **910,000** of **5 million** people



Protection to **900,000** of **5 million** people

...and much more.

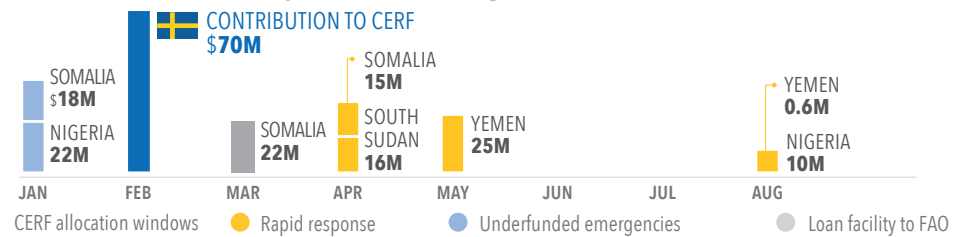


Women and girls make up **more than half** of all **CERF's beneficiaries**

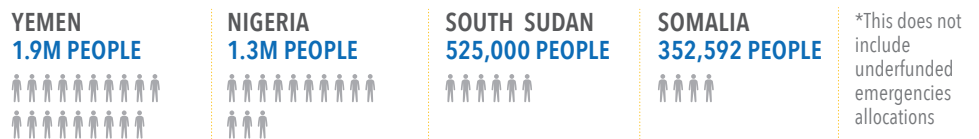
Sweden's support to famine prevention through CERF

In 2017, CERF was one of the **first responders** to the warning signs of famine in north-east **Nigeria, Somalia, South Sudan and Yemen**. By end-August, CERF had released **\$128 million** to support the most critical early action and famine-prevention activities prioritized by the humanitarian teams on the ground, making it one of the largest funding sources for the four affected countries in the early stages of the response. This would not have been possible without **Sweden's contribution to CERF in 2017, received in February**.

Timeline: CERF's famine-prevention funding and Sweden's contribution to CERF in US\$ million



People targeted by CERF funding for famine prevention*



Sweden's support to protracted and neglected humanitarian emergencies through CERF

Twice a year, CERF allocates **one third of its funds for underfunded life-saving activities** in protracted or neglected humanitarian emergencies to promote a more equitable humanitarian response around the globe.

In January 2017, CERF released **\$100 million** to sustain aid operations in nine neglected emergencies - **Cameroon, DPRK, Libya, Madagascar, Mali, Niger, Nigeria, Somalia and Uganda**. These allocations will reach more than **6 million**

people in these crises where levels of vulnerability are alarmingly high but funding remains critically low. Such large-scale disbursements are possible early in the year thanks to early transfer of funds from some of CERF's top donors, including **Sweden's contribution for 2017 in mid-February**.

On 29 August, CERF released **\$45 million** for the second round of underfunded emergencies allocation, which is expected

to reach nearly **1 million people** across four ongoing conflict and displacement crises in **Afghanistan, Central African Republic, Chad and Sudan**.

"CERF is a lifeline for people caught up in crises that don't make the headlines but where needs are just as urgent. This funding is crucial so that UN and partners can continue assisting people who need our help so desperately."

UN Secretary-General, António Guterres



Displacement

In 2015 and 2016, close to 70 per cent of CERF's total contributions were channeled to operations targeting displaced people and the communities hosting them. Sweden provided **\$134.4 million** to CERF in these two years, of which **\$94 million (70 per cent)** can be proportionally attributed to life-saving assistance for **internally displaced persons, refugees and asylum seekers, as well as host communities**. For more information please see CERF publication on displacement:

2016 CERF in Action Global Displacement.
<http://www.unocha.org/cerf/displacementbooklet>



Grand Bargain

CERF embodies many aspirations set out in the Grand Bargain. **For example, for the work stream of 'Reducing earmarking of donors contributions'**, which Sweden is leading with ICRC, CERF provides flexible un-earmarked humanitarian funding quickly and efficiently to humanitarian emergencies anywhere and at any time crises strike. A \$1 billion CERF will be an important component of increasing the availability of unearmarked emergency funding for global humanitarian action. Above all, a bigger CERF will increase predictability of support to RC/HCs, HCTs and humanitarian organizations, thereby improving overall readiness and preparedness for responding to humanitarian shocks.



Local responders

Sweden provided **\$52.3 million** to CERF in 2015.

Taking the proportional approach of the contribution received in 2015*, it can be derived that 26 per cent or **\$13.6 million of Sweden's contribution** that year, was implemented by **NGOs and local responders**, helping to 'localize' humanitarian response and build the capacity of national actors in crisis-affected countries. **

* The latest available data - CERF funding allocated in 2015 was implemented by the fourth quarter of 2016 and reported on by the end of 2016.

** In 2015, 26 per cent or \$120 million of CERF funds were sub-granted by recipient UN agencies to 648 implementing partners, of which more than half went to 505 national or local partners.