

CERF has become a leading global humanitarian funding tool for response and anticipatory action for climate-related hazards, such as droughts, floods and storms. CERF stands out for its efficient and rapid disbursement mechanisms, enabling timely humanitarian action for rapid onset and gradually accumulating climate-related emergencies that reaches the most vulnerable, often in fragile contexts. Historically, more than a quarter of all CERF funding has been provided for climate-related humanitarian action. Since its inception in 2006, CERF has allocated \$2.5 billion in relation to climate hazards, which has enabled life-saving assistance for millions of people.<sup>1</sup>

## A DEDICATED CLIMATE ACTION ENVELOPE FOR UNDERFUNDED EMERGENCIES

CERF allocations to underfunded emergencies provide critical support to humanitarian responses that fail to attract sufficient donor support, including responses to crises where climate change is among the key drivers. In CERF's second 2024 Underfunded Emergencies round, \$100 million is being allocated to severely underfunded operations in ten countries, namely Burkina Faso, Burundi, Cameroon, Ethiopia, Haiti, Malawi, Mali, Mozambique, Myanmar, and Yemen. All of these countries are facing humanitarian

needs linked to climate-related factors. Against this backdrop, the ERC has committed an additional funding envelope of up to \$10 million under this Underfunded Emergencies round to support catalytic climate-smart humanitarian action that strengthens the adaptive capacities and resilience of crisis-affected communities against climate-related shocks and stresses. The CERF Climate Action Account helped make this funding envelope possible.

By the beginning of November 2024<sup>2</sup>, CERF has supported climate-related disaster responses in

**26**  
countries assisting around  
**10M**  
people with  
**\$152M**  
in allocations including  
**\$24.6M**  
allocated for AA

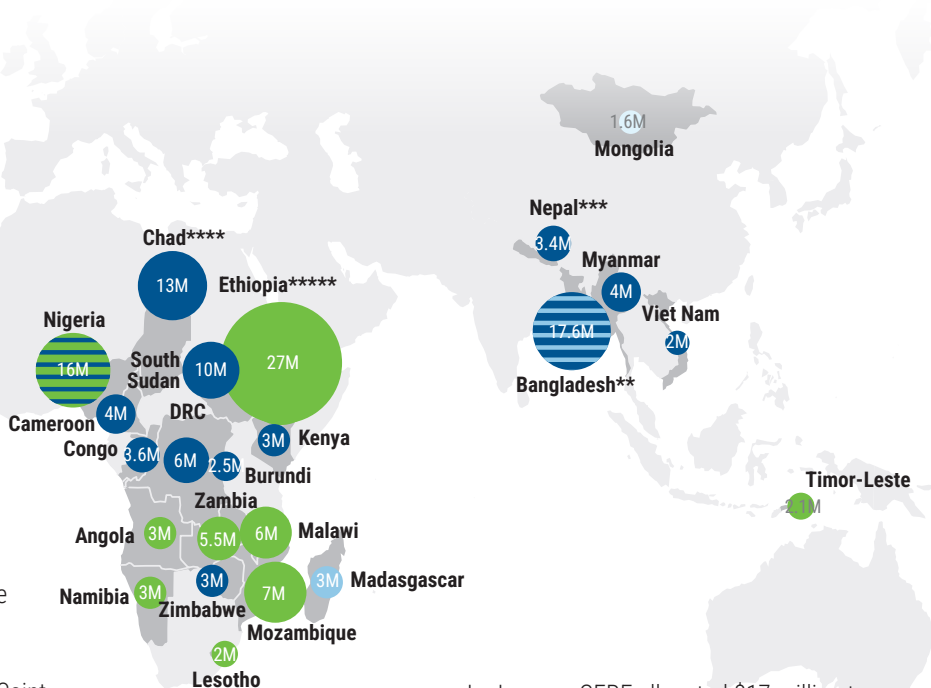


2.5M  
Jamaica  
1.5M  
Grenada, St. Vincent and the Grenadines

### Supporting climate-smart humanitarian action in 2024

In 2024, CERF has routinely made allocations which provided immediate, life-saving response to climate disasters and at the same time strengthened the resilience and adaptive capacities of affected people against future climate-related shocks and stresses. For example:

In July, CERF allocated \$1.5 million to Grenada and Saint Vincent and the Grenadines to help nearly 30,000 people struck by Hurricane Beryl. The allocation supported the distribution of fishing gear, tools, and the repair of boats, alongside training in emergency preparedness, anticipatory action, and response. The allocation also provided inputs for harvest and post-harvest processing, such as knives, fish coolers, and sea moss ropes. The equipment combined with the training did not only restore livelihoods disrupted by the hurricane but also equipped communities to better withstand future extreme weather events.



- Drought
- Flood
- Storm
- Cold wave

In January, CERF allocated \$17 million to Ethiopia to support 680,000 people affected by drought. As part of this allocation, CERF supported the rehabilitation, preventative maintenance, expansion of existing water supply systems, water storage, and upgrading of generator systems to solar with a particular focus on health care facilities. As a result, safe water is now available for those in need, while facilities will also support communities through future droughts.

\* As of 12 November 2024

\*\* Including \$6.2 million disbursed for the triggered AA flood framework in Bangladesh.

\*\*\* The \$3.4 million was disbursed for the triggered AA flood framework in Nepal.

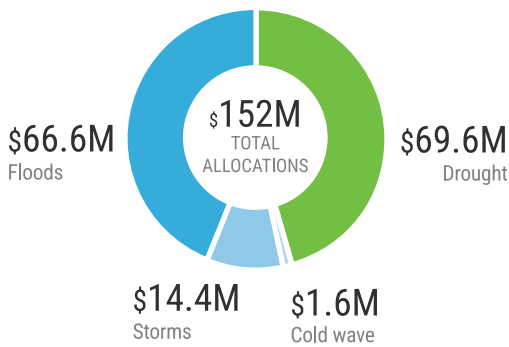
\*\*\*\* Including \$5 million disbursed for the triggered AA flood framework in Chad.

\*\*\*\*\* Including \$10 million disbursed for AA activities based on forecasted drought conditions in Ethiopia.

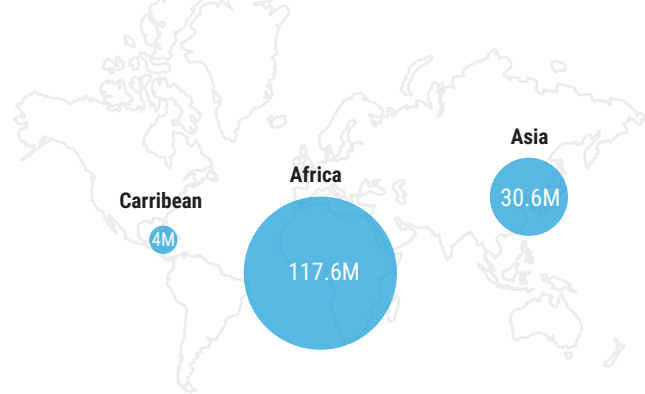
1 For information about CERF-funded climate action in 2023, see [CERF 2023 Climate Report 0.pdf \(un.org\)](#)

2 Allocations between January 2024 to 1 November 2024. This figure excludes the \$10 million allocated under the climate envelope which is underway. Details will be reported at a later date.

Allocations by disaster type *in US\$*



Distribution of climate funding across regions *in US\$*



ANITICIPATORY ACTION

El Salvador  
Guatemala  
Honduras  
Nicaragua  
Droughts

Haiti  
Tropical storms



CERF anticipatory action (AA) frameworks enhance the efficiency of humanitarian aid by delivering life-saving assistance ahead of predictable emergencies, thereby enhancing communities' resilience to better withstand shocks, and reducing the humanitarian impact. CERF-supported AA frameworks predominantly fund action to get ahead of predictable climate-shocks<sup>4</sup> by using early warning systems to trigger rapid, pre-arranged financing based on forecasts, in support of UN-led anticipatory action plans. Since 2020, CERF has disbursed \$112.5 million for climate-related AA.

By November 2024, in addition to one framework dedicated to cholera, CERF is supporting:

**19** AA frameworks for climate shocks in the form of droughts, storms and floods across

**16** countries with

**\$106.7M** in pre-arranged funding for climate-related AA frameworks

- Active frameworks: 16 frameworks in 13 countries
- Frameworks under development: 4 new frameworks in 4 countries

ANTICIPATORY ACTION IN BANGLADESH

On 4 July 2024, the AA trigger for floods in the Jamuna River basin was reached. Within 16 minutes of the early warning alert, CERF disbursed \$6.2 million to help the most vulnerable families mitigate the impact of the floods. The pre-arranged CERF funds reached more than 388,000 people in the country's north with assistance including cash transfers, water purification supplies, agricultural support, and information to prevent gender-based violence, ahead of peak flooding.<sup>5</sup>

4 While CERF primarily supports climate-related AA frameworks, CERF also supports disease-related AA frameworks in some contexts.

5 Read more in the press release [here](#) or read the features on anticipatory action in the Humanitarian Response Plan for Cyclone Remal and Monsoon Floods in Bangladesh [here](#).

## EL NIÑO

El Niño is a climate pattern of unusual warming of the Pacific Ocean, which has a wide impact across continents. Ahead of the 2023-2024 event, which was predicted to have particularly high impact, CERF took early steps to reduce human losses and enhance cost-effectiveness by focusing on early and anticipatory action where possible, in addition to responses. By the end of August, CERF has allocated \$44.6 million to El Niño-related assistance in 2024, of which \$32.6 million supported early action. This funding supports various context-specific life-saving initiatives, including shelter and insulation for cold waves, WASH efforts for flood-prone areas, food and nutritional assistance for

drought-affected regions, and cash aid to help people avoid harmful coping strategies during crises.<sup>6</sup>

Several of CERF’s El Niño-related responses also helped affected communities build their adaptive capacities and resilience against future shocks and stresses. For example, as part of a \$2.1 million Rapid Response allocation to Timor-Leste in January, CERF funded trainings on climate-smart farming practices and the distribution of home gardening kits. These initiatives helped people cope with the current El Niño episode and simultaneously enhanced their capacity to withstand future droughts.

In 2024, CERF has supported El Niño-related assistance to



### CERF CLIMATE ACTION ACCOUNT

To reach more people and scale action in response to increasingly frequent and severe climate challenges, and building on CERF’s time-tested comparative advantage, OCHA launched a dedicated Climate Action Account at CoP 28 in December 2023.<sup>7</sup> The account offers a quick, efficient and impactful avenue for donors to provide climate-related financing to CERF. Contributions to the account are attributed exclusively to CERF’s climate-related disaster portfolio, encompassing AA and response. With additional climate-financing, the account will enable CERF to:

- 1) Support and incentivize life-saving actions that reduce exposure or vulnerability to future climate change shocks, thus helping to build communities’ resilience and adaptive capacity to climate change.
- 2) Scale anticipatory action for predictable climate shocks.
- 3) Boost humanitarian responses to climate-related disasters.
- 4) Foster innovation and advance best practices in impactful climate action across the wider humanitarian system

Contributions to the CERF Climate Action Account:

(as of August 2024)

- Ireland \$5.5 M
- Luxembourg \$541k
- Latvia \$110k



CERF thanks donors for their support to the Climate Action Account. However, as climate-related disasters increasingly impact humanitarian needs, greater support is essential to deliver life-saving assistance to those affected. OCHA urgently calls for immediate contributions to the Climate Action Account in addition to regular core contributions to CERF.

[Donate now](#)

<sup>6</sup> For more information about CERF’s response to El Niño, see [here](#).

<sup>7</sup> More information on the Climate Action Account is available [here](#).