

2014 SUMMARY

For latest figures visit cerf.un.org

Donors pledged US\$481 million to CERF for 2014 – the highest-ever annual total. More than \$443 of that amount, or 92 per cent, was received before the end of the year.

CERF received more than \$455.7 million in contributions during 2014, including payments for 2013 and early funding for 2015. See table on the right for more details.

In 2014, the Emergency Relief Coordinator (ERC) approved \$460.8 million from CERF for life-saving humanitarian activities in 45 countries and territories. More than \$290.7 million, or 63 per cent of that amount, was allocated for humanitarian activities in new or rapidly deteriorating crises through CERF's rapid response window, and \$170.1 million, or 37 per cent, was allocated to sustain aid operations in poorly funded crises through the Fund's underfunded emergencies window.

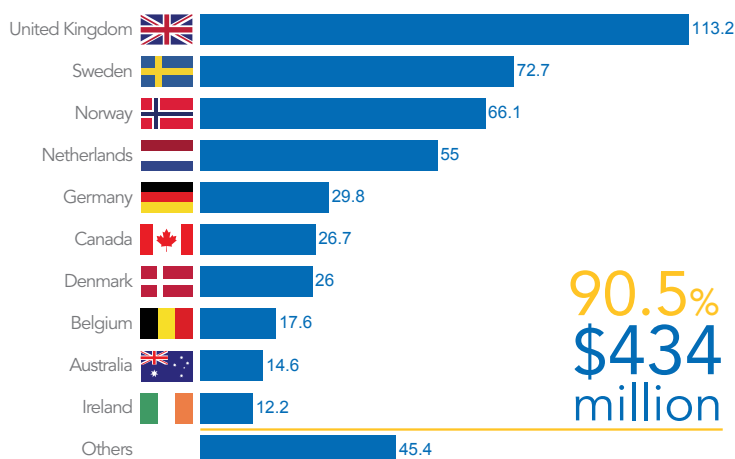
More than \$415.9 million (90 per cent) of CERF funding went to humanitarian partners responding to complex emergencies, while some \$44.9 million (10 per cent) was allocated in response to natural disasters.

Almost \$175 million (38 per cent of CERF allocations) went to humanitarian partners responding to the crises in South Sudan and the Central African Republic, including support to aid operations in neighbouring countries.

In 2014, CERF was crucial in supporting coordinated humanitarian action and strengthened leadership in nearly every major emergency worldwide. A detailed overview of 2013 CERF allocations is available overleaf.

TOP 10 CONTRIBUTORS FOR 2014

In \$US million, received for the year 2014



90.5%
\$434
million

CONTRIBUTIONS RECEIVED IN 2014

In US\$, received between 1 January and 31 December 2014

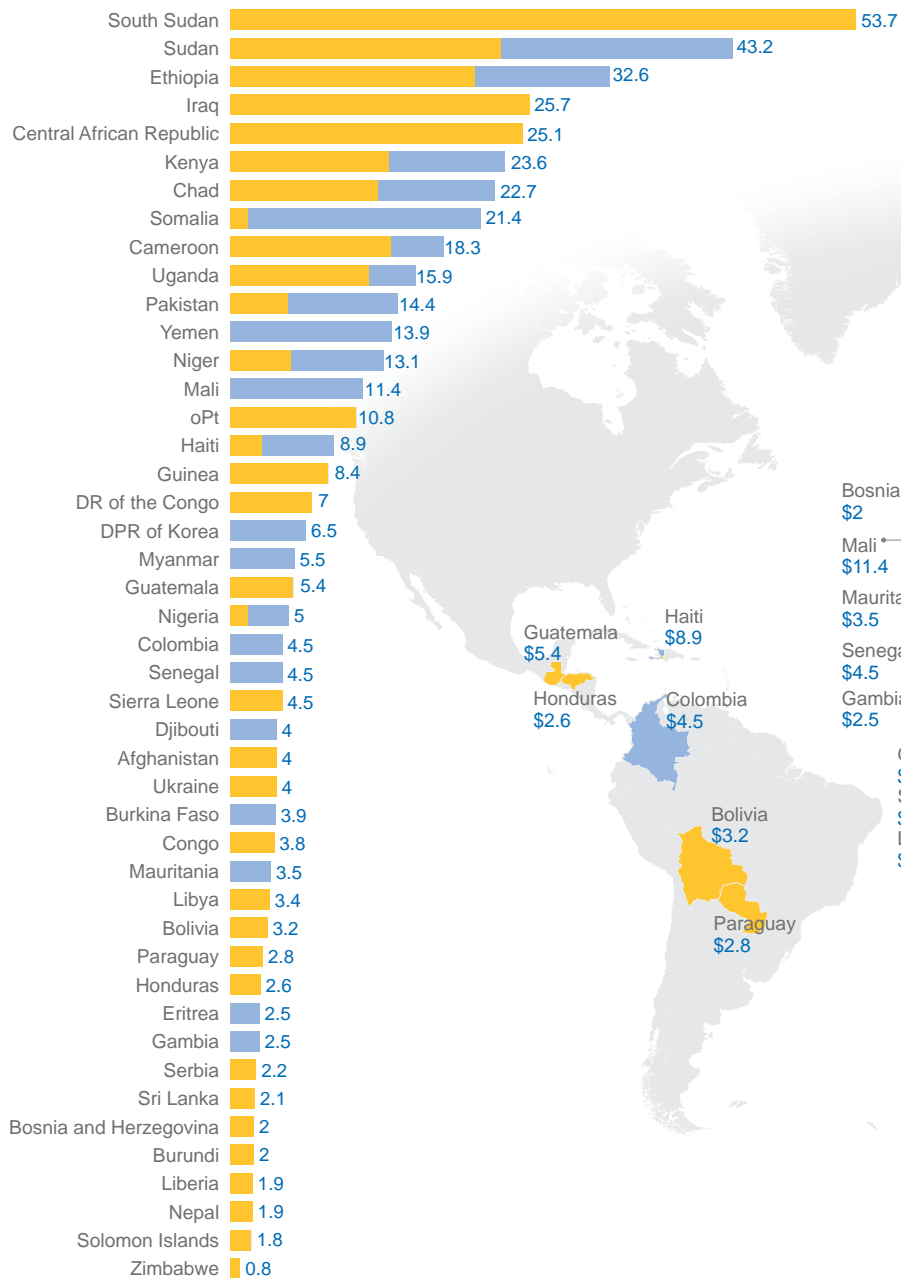
DONOR	for 2013	for 2014	for 2015
UN Member States	\$11,404,234	\$431,545,416	\$16,337,100
Andorra		\$20,538	
Armenia		\$5,000	
Australia		\$14,580,884	
Belgium	\$4,834,550	\$17,588,690	
Brazil		\$700,000	
Canada		\$26,719,985	
Chile		\$30,000	
China		\$500,000	
Denmark	\$6,398,304	\$18,204,325	
Estonia			\$125,100
Finland		\$9,705,500	
Germany		\$29,819,224	
Guyana		\$2,179	
Iceland		\$100,000	
India		\$500,000	
Indonesia		\$200,000	
Ireland			\$12,212,000
Japan		\$1,590,814	
Republic of Korea		\$4,000,000	
Kuwait		\$500,000	
Liechtenstein		\$278,118	
Luxembourg		\$5,082,592	
Mali		\$100,000	
Monaco		\$67,920	
Myanmar	\$10,000	\$10,000	
Netherlands		\$54,956,000	
New Zealand		\$2,563,200	
Norway		\$56,419,935	
Pakistan	\$10,000	\$10,000	
Peru		\$4,674	
Poland		\$212,850	
Portugal	\$67,655	\$67,655	
Romania		\$53,000	
Russian Federation		\$1,500,000	
San Marino		\$9,970	
Singapore		\$50,000	
Slovenia	\$68,726		
Spain		\$2,490,000	
Sweden		\$57,486,099	
Switzerland		\$7,860,763	
Thailand		\$20,000	
Turkey		\$250,000	
United Arab Emirates		\$100,000	
United Kingdom		\$113,185,500	
United States		\$4,000,000	
Uruguay	\$5,000		
Vietnam	\$10,000		
Observers		\$5,000	\$5,000
SMO of Malta		\$5,000	\$5,000
Regional Authorities		\$308,144	
State of South Australia		\$308,144	
Private contributions	\$65,787	\$70,267	
UN Spouses Bazaar		\$59,967	
Private donations	\$65,787	\$10,300	
Grand Total	\$11,470,021	\$431,923,827	\$12,342,100

2014 Allocations

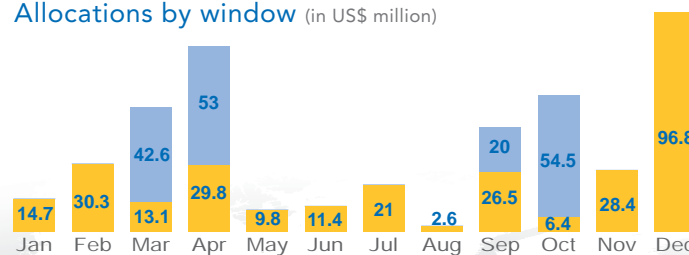
As of 31 December 2014

A sound humanitarian investment

Total 2014 CERF allocations by country (in US\$ million)



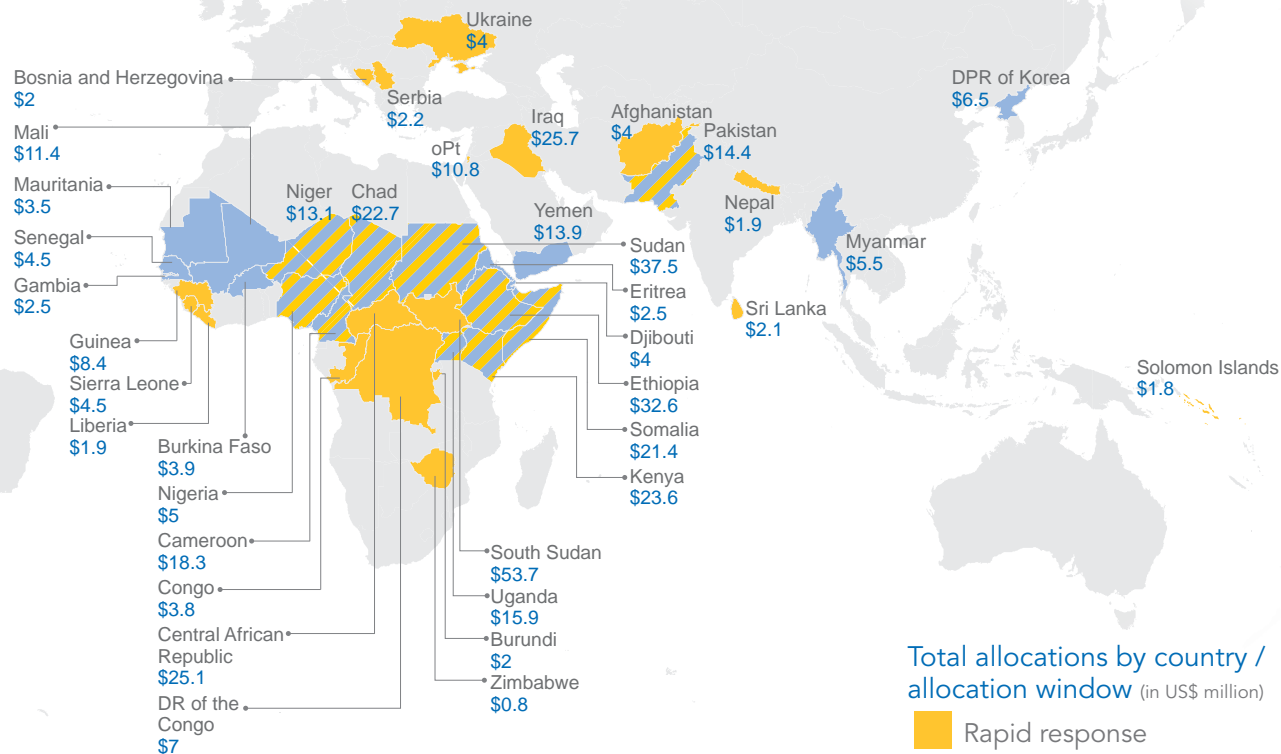
Allocations by window (in US\$ million)



\$290.7 million Rapid response

\$170.1 million Underfunded emergencies

\$460.8 million



Total allocations by country / allocation window (in US\$ million)

- Rapid response
- Underfunded emergencies
- Both allocation windows

United Nations Central Emergency Response Fund (CERF) is managed by the Office for the Coordination of Humanitarian Affairs (OCHA). CERF receives contributions year-round from United Nations Member States and Observers, regional bodies, private sector, foundations and individuals. For more information on CERF visit cerf.un.org.