

SYRIA CRISIS

CERF-funded response 2011-2016

As of 7 October 2016



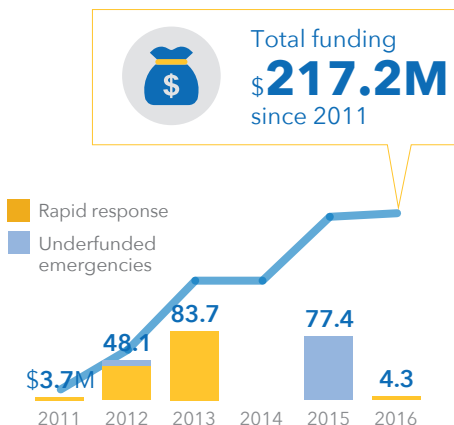
United Nations
CERF

Central
Emergency
Response
Fund

Nearly 13.5 million people are in need of humanitarian assistance in Syria and neighboring countries due to the continuing conflict. Since 2011 CERF has allocated over US\$217 million to support displaced people in Syria, Egypt, Iraq, Jordan, Lebanon and Turkey. In 2016 alone, CERF has allocated \$4.3 million to support humanitarian operations in Jordan.

ALLOCATIONS 2011-2016

in US\$ million



POPULATION AFFECTED



13.5 million¹

People in need of humanitarian assistance and protection inside Syria



6.5 million

People displaced inside Syria

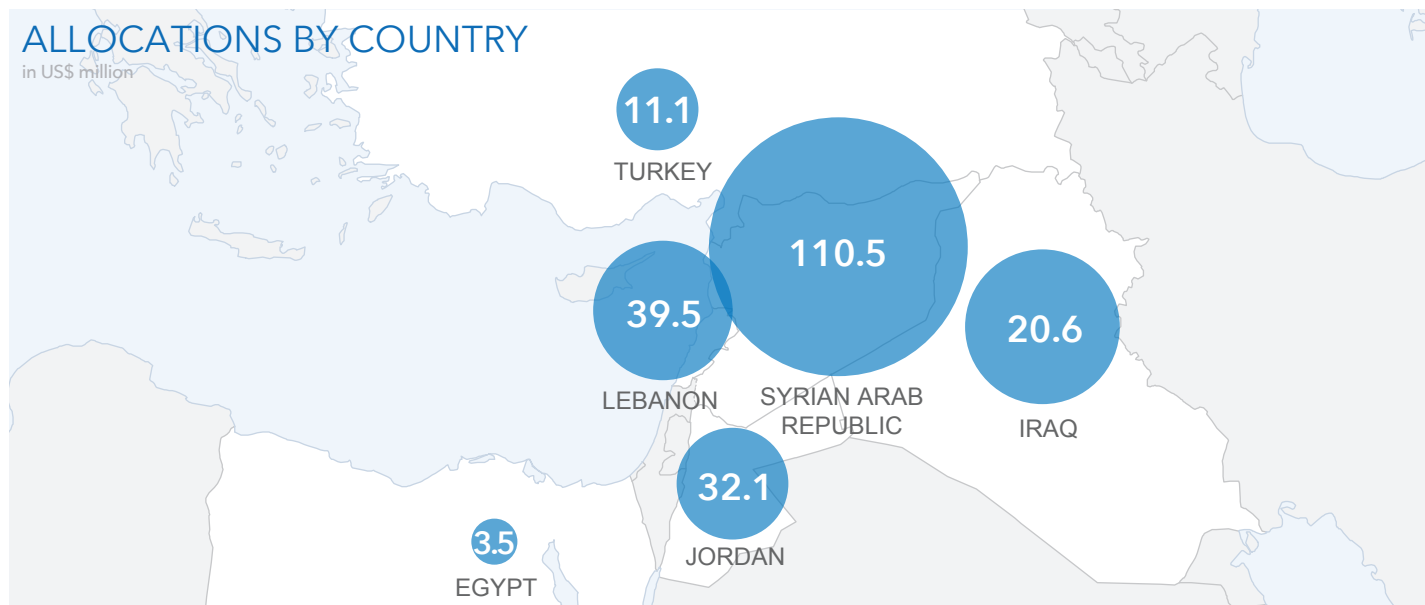


4.8 million

Registered Syrian refugees in neighbouring countries²

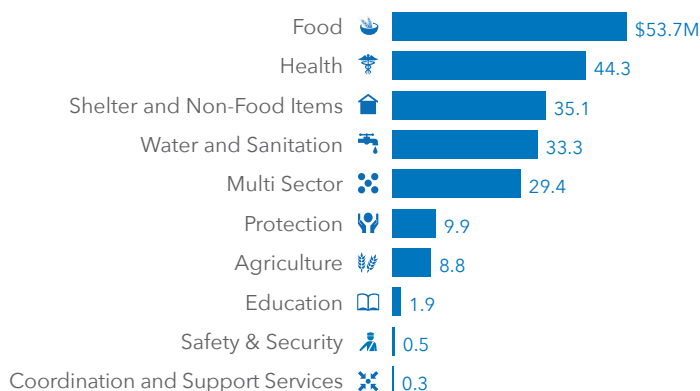
ALLOCATIONS BY COUNTRY

in US\$ million



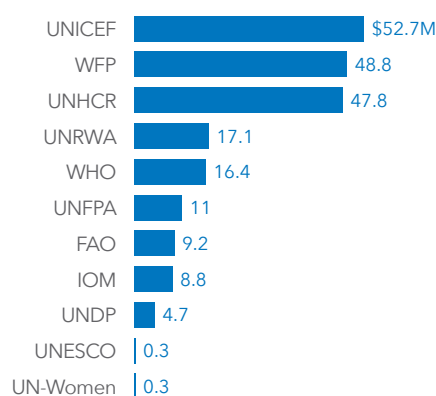
ALLOCATIONS BY SECTOR

in US\$ million



ALLOCATIONS BY AGENCY

in US\$ million



CERF is one of the fastest and most effective ways to support rapid humanitarian response for people affected by natural disasters and armed conflict. The Fund, which is managed by the United Nations Office for the Coordination of Humanitarian Affairs (OCHA), receives voluntary contributions year round from United Nations Member States and Observers, regional governments, private sector, foundations and individuals | The boundaries and names shown and the designations used on this map do not imply official endorsement or acceptance by the United Nations.