

# ABOUT CERF

Invest in Humanity

The Central Emergency Response Fund (CERF) is one of the fastest and most effective ways to enable urgent life-saving humanitarian action for people affected by crises anywhere in the world.

## HOW CERF WORKS

Established in 2005 as the UN's global emergency response fund, CERF pools contributions from donors around the world into a single fund allowing humanitarian responders to deliver life-saving assistance whenever and wherever crises hit.

CERF has a US\$1 billion annual funding target and is fully unearmarked to ensure funds go to meet the most urgent, life-saving needs.

During emergencies, humanitarian organizations on the ground jointly assess and prioritize needs and apply for funding from CERF. Funds are immediately released if these proposals meet CERF's criteria, i.e. the needs are urgent and the proposed activities will save lives.

CERF disburses two types of grants:

- Rapid Response grants provide support when a new crisis hits, when an existing emergency deteriorates significantly or in response to time-critical needs.
- Underfunded Emergencies grants provide support for critical needs in underfunded and often protracted crises. These are allocated during two rounds per year.

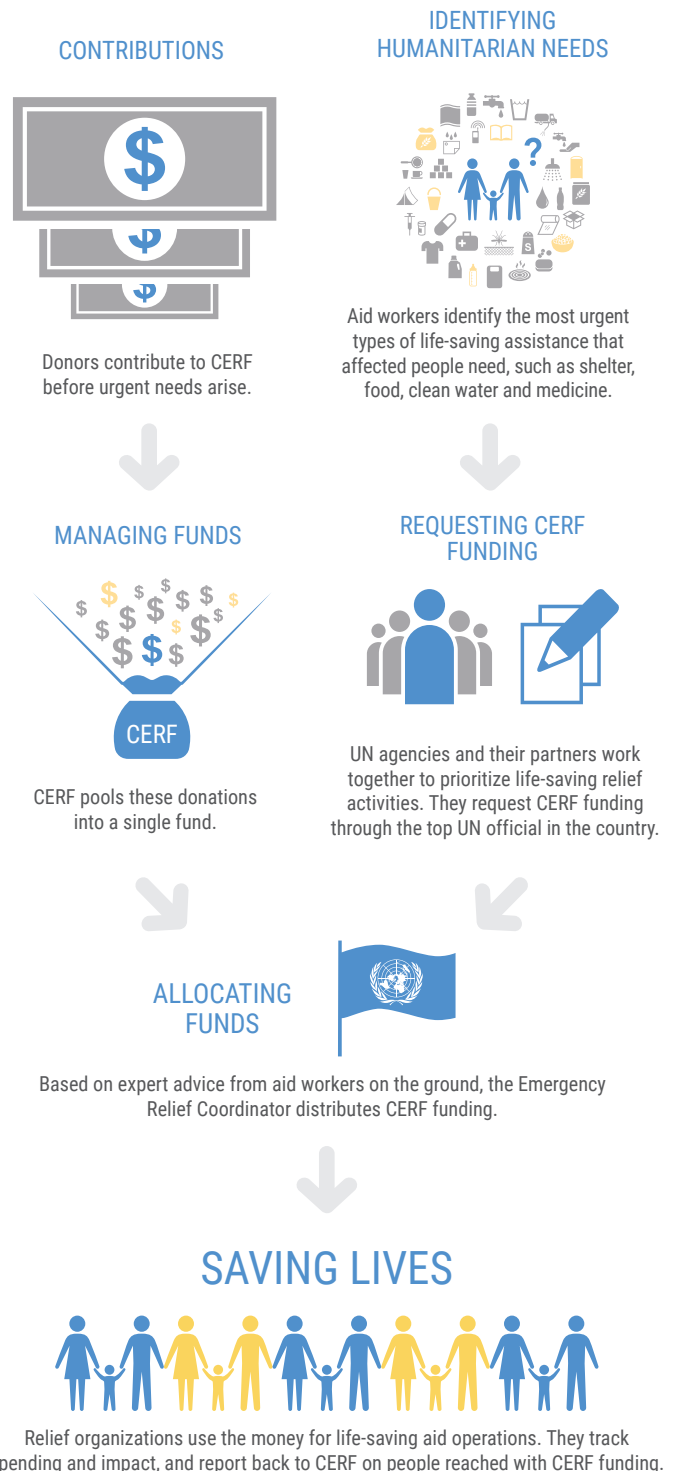
CERF also has a \$30 million loan facility to cover critical funding gaps in humanitarian operations based on indications that donor funding is forthcoming.

CERF allocations are designed to complement other humanitarian funding sources, such as Country-Based Pooled Funds and bilateral funding.

## CERF MANAGEMENT

The Emergency Relief Coordinator manages CERF on behalf of the UN Secretary-General and is supported by the CERF secretariat of the United Nations Office for the Coordination of Humanitarian Affairs (OCHA). The CERF secretariat ensures that funds are allocated properly, disbursed in a timely manner, and that the use of funds is reported appropriately and transparently.\* The CERF Advisory Group provides policy guidance to the Secretary-General on the use and impact of the fund.

\* As a revolving fund, CERF may disburse more or less than its income within a calendar year.



## FUNDING RECIPIENTS

TOTAL **\$5.5B** ALLOCATIONS TO **104** COUNTRIES OR TERRITORIES SINCE 2006

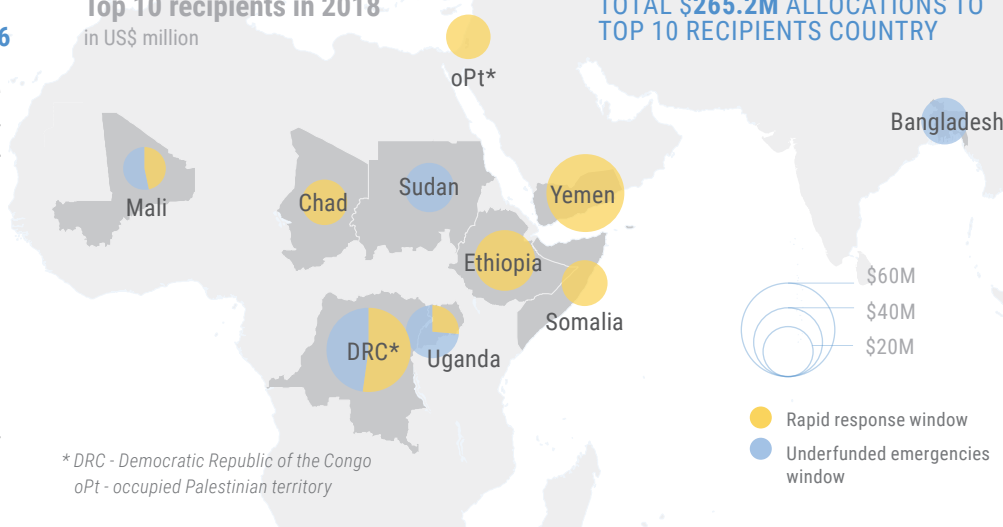
Each year, on average, CERF grants have helped humanitarian partners deliver critical health care to 13 million people, water and sanitation to 10.3 million people, food assistance to 6.6 million people, protection to 4.3 million people, agriculture support to 3.5 million people, nutrition programmes for 2.3 million and shelter to 1.9 million people.\* In addition, the Fund supports services for refugees and displaced people, mine action, emergency education and camp management for millions of people in need.

In 2018, CERF allocated \$500.5 million to support life-saving humanitarian action in 48 countries and territories. Some \$321 million went to kick-start and scale up operations in 35\*\* countries or territories and \$180 million was released to bolster aid operations in 18 of the world's most neglected crises.

\* Includes averages from 2015 - 2017. As part of ongoing enhancements to the CERF reporting framework, the CERF secretariat put in place an improved methodology resulting in a clearer distinction between people benefiting directly and indirectly from CERF-funded humanitarian action, leading to more accurate figures.

\*\* While 35 countries or territories received direct funding from Rapid Reponse allocations, two additional countries benefited from a regional CERF allocation for the Venezuela refugee and migration crisis.

Top 10 recipients in 2018  
in US\$ million



\* DRC - Democratic Republic of the Congo  
oPt - occupied Palestinian territory

TOTAL **\$265.2M** ALLOCATIONS TO TOP 10 RECIPIENTS COUNTRY

2018 allocations by sector  
in US\$ million

|                 |  |          |
|-----------------|--|----------|
| Food            |  | \$113.6M |
| Health          |  | 74.6     |
| WASH            |  | 61.1     |
| Nutrition       |  | 45.1     |
| Multi-sector    |  | 41.7     |
| Shelter and NFI |  | 37.8     |
| Other*          |  | 126.6    |

\* CERF also supported camp management services, common services and coordination, early recovery, education protection and mine action.

2018 allocations by agency  
in US\$ million

|        |          |
|--------|----------|
| WFP    | \$138.6M |
| UNICEF | 132.1    |
| UNHCR  | 60.1     |
| WHO    | 49.1     |
| IOM    | 41.0     |
| FAO    | 32.9     |
| UNFPA  | 20.1     |
| Other* | 26.5     |

\* Other agencies: UNRWA, UNDP, UN Women, UNOPS, OHCHR

## CONTRIBUTORS

Since its inception, 126 UN Member States and observers as well as regional governments, corporate donors, foundations and individuals have enabled CERF's humanitarian partners to deliver \$5.5 billion worth of life-saving assistance in over 100 countries and territories.

In 2018, donors contributed a record-high of \$555.3 million to CERF.

IN 2018 CERF RECEIVED

**\$555.3M**

FROM **56** DONORS

Top 10 donors in 2018

|             |  |          |
|-------------|--|----------|
| UK          |  | \$114.3M |
| Germany     |  | 110.2    |
| Sweden      |  | 88.2     |
| Netherlands |  | 67.9     |
| Norway      |  | 54.4     |
| Canada      |  | 22.5     |
| Denmark     |  | 21.6     |
| Ireland     |  | 14.3     |
| Belgium     |  | 13.6     |
| Australia   |  | 8.2      |
| Others*     |  | 40.0     |

\* For a complete list of CERF donors go to: <https://cerf.un.org/our-donors/contributions>

## DONATE

**01** Member States, observers and other authorities that wish to contribute to CERF can contact the OCHA Donor Relations Section ([ocha.donors.relations@un.org](mailto:ocha.donors.relations@un.org))

**02** Individuals, corporations and foundations can visit <http://bit.ly/GIVETOCERF> to contribute directly to CERF.

**03** For general information about CERF, please contact [cerf@un.org](mailto:cerf@un.org) or visit [cerf.un.org](http://cerf.un.org)