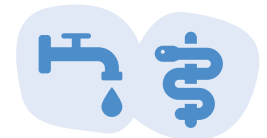


Responding to the impact of COVID-19 with speed and agility

The Central Emergency Response Fund (CERF) and Country-based Pooled Funds (CBPFs) played an important role in the delivery of emergency aid following the outbreak of COVID-19. The Funds responded to the primary impact of the pandemic with speed and agility, focusing on health and water/sanitation services. The Funds also addressed the secondary impacts of the pandemic, focusing on broader needs such as food insecurity, protection and gender-based violence. While responding to the COVID-19 emergency, the Funds were able to sustain critical humanitarian responses around the globe.



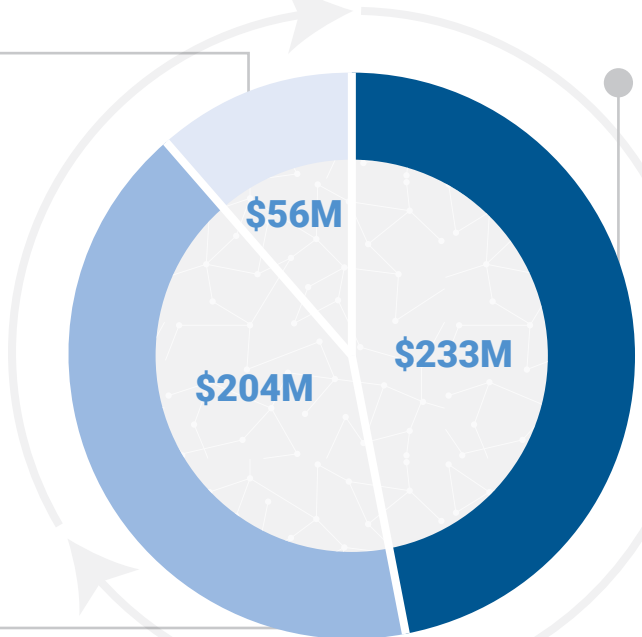
SUPPORTING LOGISTICS AND COMMON SERVICES

The pandemic severely disrupted international supply chains. CBPFs and CERF allocated **\$56M** to ensure critical supplies could reach those in need. This funding enabled WFP and other humanitarian partners to expand logistic and support services, including the transportation of supplies and flights for emergency workers.



SUPPORTING THE HEALTH AND WATER/SANITATION RESPONSE

Together, OCHA-managed pooled funds allocated **\$233M** to scale up the health and water/sanitation response. Humanitarian partners served remote, vulnerable communities with essential health care and protective equipment, and increased access to clean water, sanitation and hygiene. Partners also raised awareness about the spread of COVID-19.



ADDRESSING THE SECONDARY IMPACTS OF THE PANDEMIC

CERF and CBPFs provided **\$204M** to meet critical humanitarian needs that arose as a result of COVID-19. Over \$113M was provided to address **food insecurity** and restore livelihoods – including through distribution of food parcels, agricultural inputs and cash transfers. In response to increasing **risk and exposure to GBV**, OCHA Pooled Funds made targeted allocations to strengthen prevention and response – with some \$30M allocated by CERF and \$6.6M allocated by CBPFs to scale up GBV prevention and response. The Pooled Funds also prioritized **broader protection needs**, with an additional \$20M provided to benefit the most vulnerable people impacted by the pandemic.



Innovating to respond to COVID-19

CBPFs introduced flexibility measures in the use of budgets and adapted monitoring arrangements while maintaining sound accountability and oversight. UN agencies were granted maximum flexibility on where to use CERF funding. CERF also introduced innovative allocation approaches to channel funding to where it was needed most, and to remain in step with the evolving nature of the pandemic.

TOTAL ALLOCATION (US\$)

\$493M

CERF ALLOCATION (US\$)

\$241M

CBPF ALLOCATION (US\$)

\$252M



CERF PEOPLE TARGETED

69.2M



OF WHICH

Men 19.3M
Women 20.1M

Boys 15.1M
Girls 14.8M

CBPF PEOPLE TARGETED

44.8M



OF WHICH

Men 12.1M
Women 13.5M

Boys 9.4M
Girls 9.8M

Channeling resources to NGOs for front-line response

The CERF and CBPFs provided \$226 million to international and national NGOs, Red Cross/Red Crescent National Societies and other local partners. These resources were channeled directly or by way of subgrants.

CBPFs allocated some 63% of total resources to NGOs. Of total funding, 32 per cent (\$80 million) benefited local and national actors specifically.

CBPF

ALLOCATION PER PARTNER TYPE

NO. PARTNERS

283

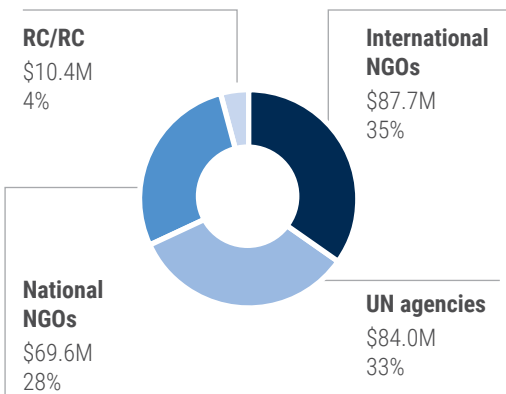
NO. PROJECTS

765

TOTAL ALLOCATION (US\$)

\$252M

TO NGOs **67%**

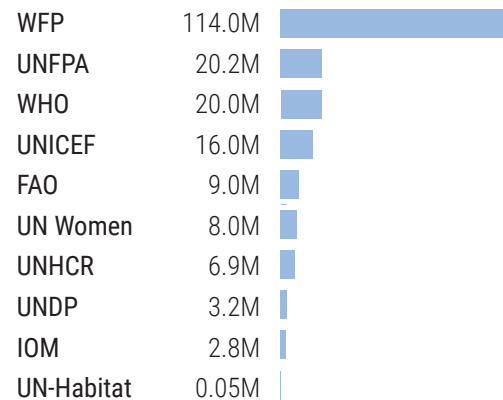


CERF disbursed \$58 million to NGOs and partners, including by way of sub-grants from UN agencies. This includes an innovative allocation of \$25 million specifically to international and national NGOs in six countries. One third of all NGOs supported under this allocation were national or local NGOs.

CERF

ALLOCATION PER UN AGENCY (US\$) *

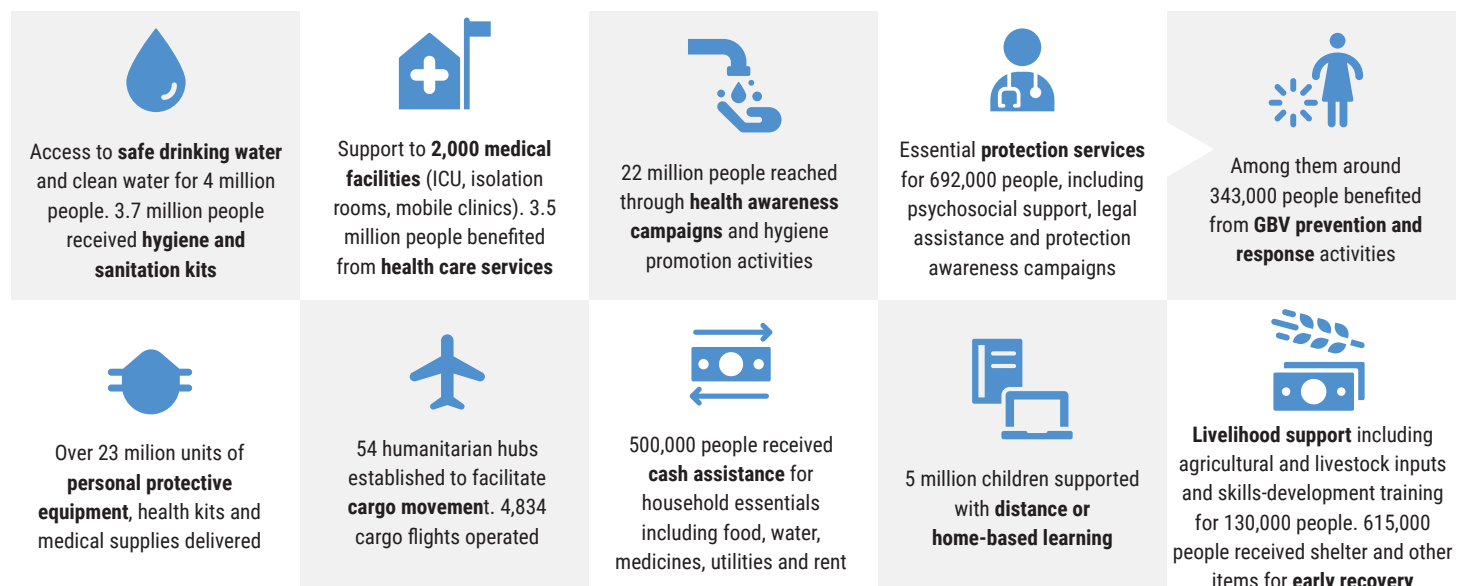
UN AGENCY TOTAL ALLOCATIONS



NGOs via IOM 25.0M

* The \$241M allocated by CERF includes \$15.6M in reprogramming from existing projects.

Measuring the impact and reach of Pooled Fund investments



The boundaries and names shown and the designations used on this map do not imply official endorsement or acceptance by the United Nations.

Creation date: 02 March 2021 Sources: OCHA Pooled Funds Management Branch Feedback: cerf@un.org www.unocha.org cerf.un.org https://pfdata.unocha.org/COVID19/ https://cbpf.data.unocha.org/