

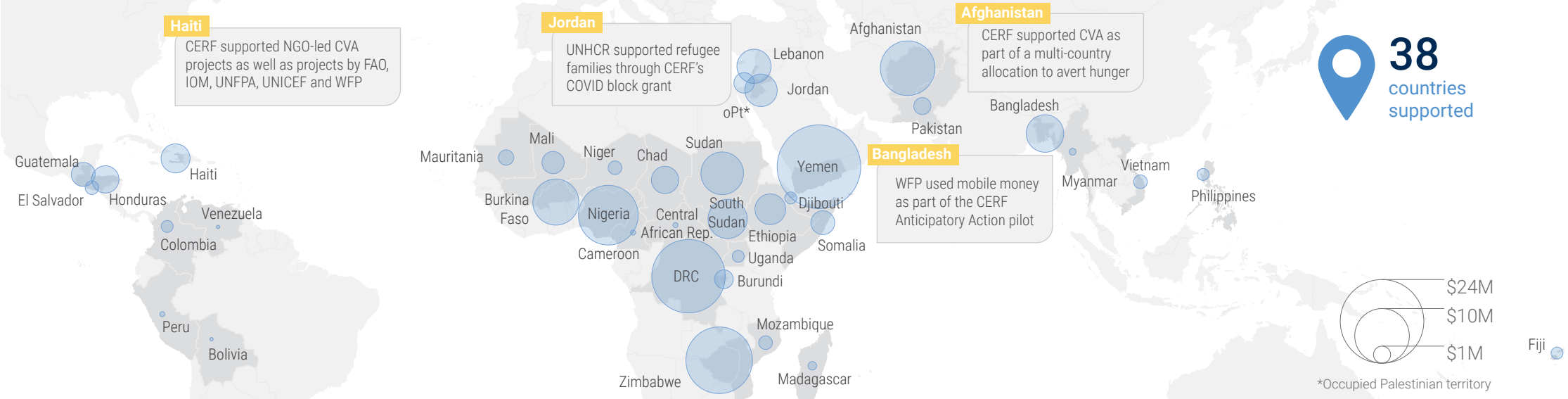


OCHA

CASH AND VOUCHER ASSISTANCE

CERF support in 2020

As of 20 February 2021



CERF support triples

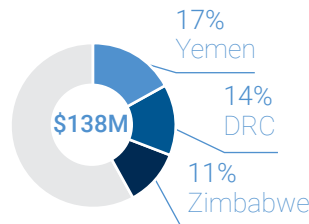
CERF's support for cash and vouchers increased significantly, from **\$49M in 2019 to \$138M in 2020**. Two-thirds of the people targeted with CERF-funded CVA are in 3 countries: Yemen, Afghanistan and Bangladesh.

\$138 million transferred to vulnerable communities

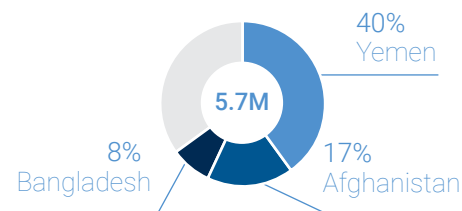
5.7 million people targeted

CERF encourages the use of cash and voucher assistance (CVA) in humanitarian action as the default response modality. CERF provided funding for cash and vouchers through its Rapid Response window, including its Anticipatory Action pilots, and its Underfunded Emergencies window.

Top 3 countries by CVA amount



Top 3 countries by people targeted



30% of all CERF projects included cash and vouchers



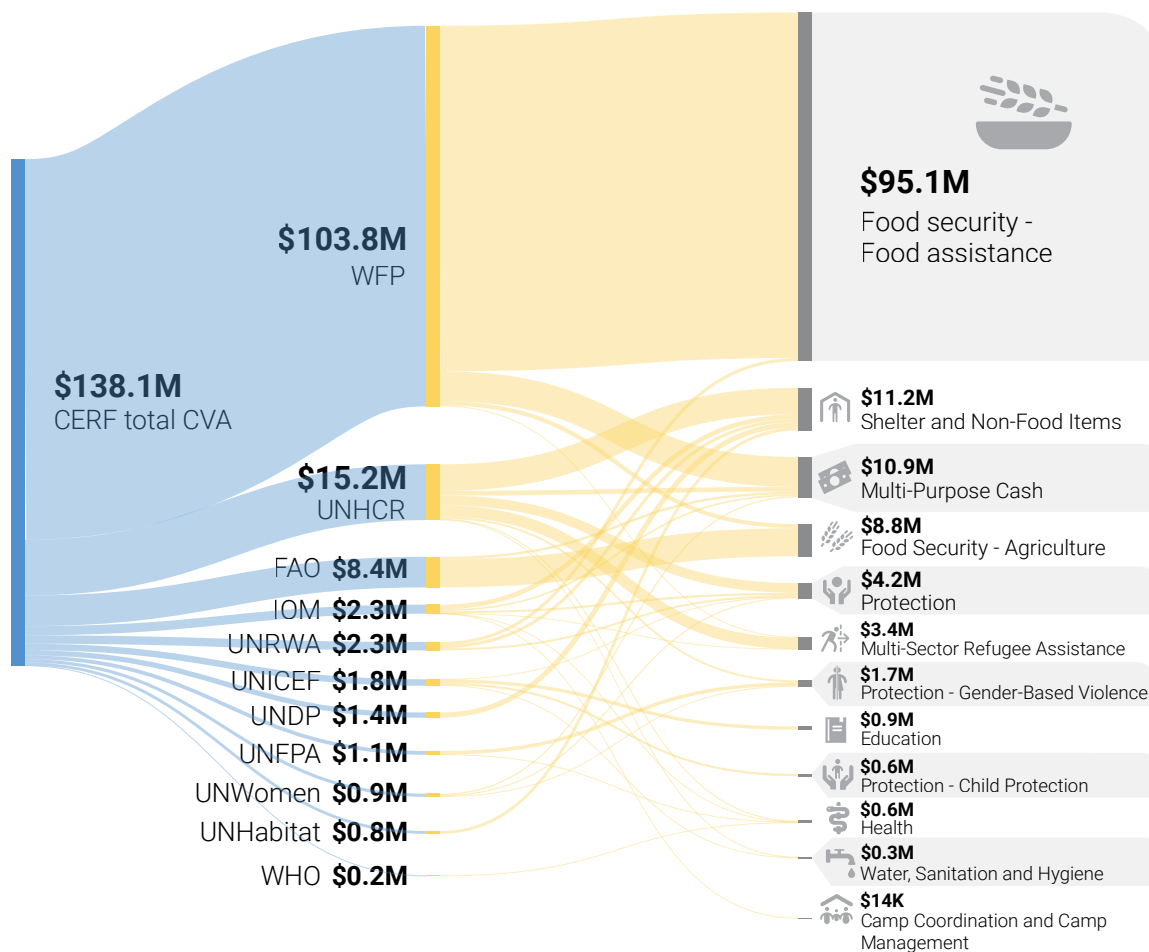
CASH AND VOUCHER ASSISTANCE

OCHA

CERF support in 2020

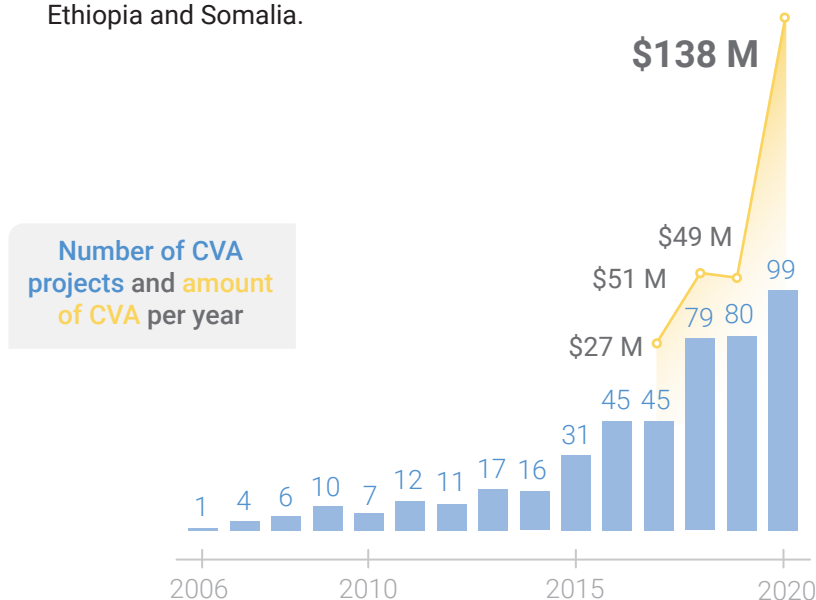
As of 20 February 2021

CERF's CVA allocation by agencies and sectors



The number of CERF-funded CVA projects has climbed steadily since 2006, rising to 80 projects in 2019 and 99 in 2020. In 2020, the amount of CERF funds transferred to beneficiaries through CVA **almost tripled** compared to 2019. CERF released innovative allocations specifically to promote CVA:

- Following a prolonged drought in Zimbabwe the Emergency Relief Coordinator (ERC) released **\$20M** from CERF's Rapid Response window to scale-up WFP's cash operation to strengthen social safety nets in urban and peri-urban areas.
- The ERC released **\$80M** for cash and voucher programming to address rising levels of hunger in 6 countries: Afghanistan, Burkina Faso, DRC, Nigeria, South Sudan and Yemen.
- CERF's Anticipatory Action pilots, totaling **\$33M**, included support for cash and voucher programming in Bangladesh, Ethiopia and Somalia.



The boundaries and names shown and the designations used on this map do not imply official endorsement or acceptance by the United Nations. Data on total amount of CVA prior to 2017 not available. Beneficiary figures refer to the number of people targeted by CERF-funded projects as per agency's project proposals. Creation date: 20 February 2021 Sources: CERF Secretariat Feedback: cerf@un.org, www.unocha.org cerf.un.org Twitter: @UNCERF, @UNOCHA