

HUMANITARIAN SITUATION

Since 2008, over five million people have been forced to leave their homes in the Federally Administered Tribal Areas (FATA) in a series of displacements due to militancy, and government-led security operations against non-state armed actors. From 2015-2017, the improved security situation allowed for 442,067 families to return home. In 2018, the basic needs of 1.26 million people remain to be addressed in the return areas of FATA. Priority sectors for assistance in return areas are health, nutrition, food security, shelter and NFIs, education and protection in collaboration with the government.



2.9 million people in need¹



1.3 million people targeted overall¹



280,319 IDPs for 2017²



1.6 million hosted refugees²



81.1 under 5 y.o. mortality (per 1,000 live births)²



178 maternal mortality rate (per 100,000 live)²



91.4% improved water source (% population with access)²

CERF RESPONSE

An \$8 million allocation will focus on the needs of 411,141 returnees in Kurram, South Waziristan and Orakzai agencies of FATA. CERF funds will support resumption of agricultural activities to ensure household food security and income-generation; primary education at partially and fully damaged school sites; and provision of life-saving nutrition interventions for acutely malnourished children under 2 years. Protection will be integrated in the proposed activities. The CERF grant will complement Pakistan Humanitarian Pooled Fund funding by assisting vulnerable families in the same geographical areas but with a different set of timebound activities.



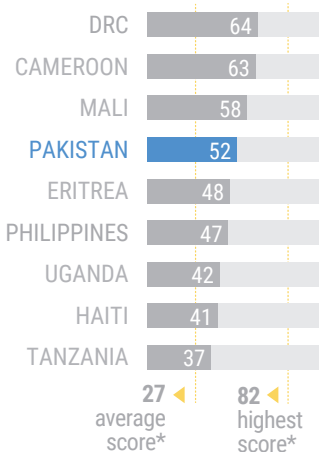
\$8 million allocated amount



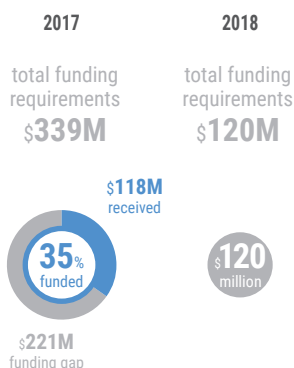
411,141 people targeted by CERF

FUNDING, RISK AND VULNERABILITY

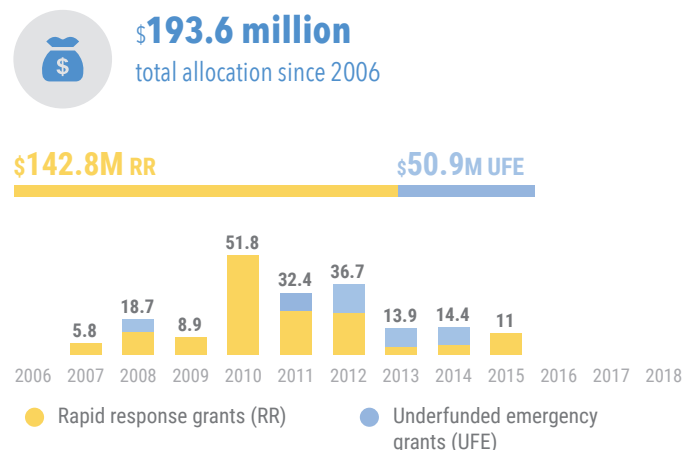
Risk & vulnerability³ CIRV (1-100)



Funding level⁴ in US\$ million (at the time of analysis November 2017)



Allocations to Pakistan since 2006³ in US\$ million



*based on 192 countries in the CIRV analysis